

Artists Open Houses

Weekends
4-27 May 2024



aoh.org.uk



@artistsopenhouses



HANNINGTONS
BRIGHTON

CELEBRATING ARTS AND INDEPENDENTS



Hanningtons is a vibrant hub of independent artists, creatives and designers. From jewellery to sculpture, modern art to accessories, you won't find a Hanningtons gift anywhere else. Come and join us in celebrating artists and independents by shopping local in Brighton's green lane.

 @HanningtonsBrighton  /HanningtonsBrighton

www.hanningtonsbrighton.com

Sponsors and Supporters



Victor Boorman & Co.



Sponsors and Supporters

Brighton Fringe
Brighton & Hove City Council
Gemini Print
Hamptons Estate Agents
Hanningtons Brighton
Latest TV
Lawrence Art Supplies
Victor Boorman & Co.
Visit Brighton

AOH Team

Judy Stevens *Festival Director*
Chris Lord *Design and Development Director*
April Williams *Festival Manager*
Fiona McTernan *Ads and Sponsorship*
Tim Jukes *Website Design and Development*
Georgina Huguenet *Finance Manager*
Nicola Jeffs and Siobhan Scott *PR and Comms*
Paul Clark *Distribution*
Syl Ojalla *Photography*

Contents

3	Introduction
4	Sarah Arnett
7	Travel information
7	How to use the brochure
8	Map Showing venues in Brighton and Hove
11	Beyond The Level
15	Brunswick
21	Central
27	Dyke Road
33	Fiveways
41	Hanover
49	Hove
57	Kemptown
63	Seven Dials
71	West Hove
77	Independent
81	Map showing venues outside Brighton and Hove
83	Coastal
87	Ditchling
91	Independent (Sussex)
93	Hurstpierpoint



Cover artist: Sarah Arnett

AOH 2024 brochure cover artist, Sarah Arnett, works across a range of media, including textile design, hand-painting, photography, digital-illustration, public space commissions and brand collaborations. There's always a narrative running through her work, influenced by flora, fauna, film, poetry, architecture and travel. Sarah considers her aesthetic a fantasy style, inviting the viewer into an indulgent paradise that leaves you feeling as though you've woken from a dream.

Cover image: *The Sirens: Sarah Arnett*

Design: Chris Lord

Print: Gemini Press www.gemini-press.co.uk

Artists Open Houses Ltd is a not for profit company.

Registration N^o. 5420675 (England and Wales)

Disclaimer: Whilst every care has been taken to ensure that the information given in this publication is accurate at the time of going to print, AOH cannot be held responsible for any variations, errors or admissions of which we have not been advised. We recommend that visitors confirm details for individual venues online before setting out. No recommendation is implied in any of the listings. Under no circumstances can AOH accept responsibility for any loss, damage or injury sustained by any member of the public visiting the Artists Open Houses festival.



CLARA WILKINSON

CONTEMPORARY PAINTINGS

Hove Arts Trail venue 18

Open 4,5 May / 10,11,12 May

Or by appointment weekdays @clarawilkinsonart

Artists Open Houses

May 4–27 2024

There is more than ever to discover in the Artists Open Houses festival this year - with over 180 venues taking part across the city of Brighton and Hove, out to Ditchling, Hurstpierpoint, Ovingdean and along the coast from Newhaven to Brighton City Airport.

The month of May brings you the opportunity to meet artists and makers in their homes and studios, discuss their work, how it is made, as well as the artists' motivating ideas and inspiration. Many venues offer workshops to learn new skills and explore your creativity in myriad new ways.

The Artists Open Houses festival is inclusive, encompassing artists of all ages and abilities, from those just starting out on their careers to established artists and makers. School and university students, neurodivergent artists, those with learning disabilities and mental health issues, residents of senior homes, all our welcomed and encouraged to take part.

Look out for highlights this year, including on-the-spot dog portraits and a specially composed canine polyphonic dog sound mash-up! Check out both the Wandering and Portable Open Houses at various locations around town.

In Hanningtons Lane, learning disabled and neurodivergent artists from the Figment Arts Studio present an opportunity to discover local folklore, fairy tales and legends, inviting you to take part in their collaborative paintings. And don't miss The Little Picture Place, where you can find this year's brochure cover artist, Sarah Arnett, with her exotic wallpaper designs and Sunday salons.

With many houses offering tea and cake, often in sunny gardens, alongside the art, a visit to the Artists Open Houses is the perfect way to spend a May weekend. Explore the city, travel out to the countryside, meet the artists and buy new artworks for your home - the Artists Open Houses offer a host of inspirational experiences, art and fun!

Judy Stevens

AOH Festival Director

Sarah Arnett

2024 Cover Artist

Sarah Arnett is an artist, illustrator and designer, specialising in fine art, textiles, and interiors. She is known for her fabulously eclectic aesthetic: exoticism, colour, busy pattern and bold ornament - and a vision of pure escapism. Attention to process is at the heart of everything Sarah creates, which has been evolving since her days as a weaver - and her fire for experimentation is still burning.



Working from her Brighton studio, Sarah's colourful artworks begin with a hand-drawn idea, sketches are then layered with digital illustration, painting, and original photography, using meticulous, highly-skilled digital processes. Every tiny element is hand drawn and built-up to create a rich and complex final image. These digital drawings are then combined with hand-painted backgrounds and self-taken photographs, creating a surreal mix of the actual and the imagined.

Sarah's work takes you into a world of the imagination, where Regency Palaces are bedecked with jewels and mystical creatures roam through exotic lands. It's a stage-set for theatre; it's the glitter of Hollywood; it's a dizzying dream of poetry.

Sarah's work draws on her life experiences: growing up in Zimbabwe, traveling through India, and living in the seaside city of Brighton. The power of place is fused with illusion and theatricality; film characters and works of architecture appear tangled with wild foliage and mystical animals. Sarah's surreal dreamscapes mix the real with the imagined, the stories invite you all the way inside. They are compositions in time, a place to dream and to lose yourself in colour.

www.saraharnett.co.uk
 @studiosaraharnett

*Opposite page: Siren Song
 This page, clockwise from right:
 Mr Biswas book cover, Picador
 Fashion design
 Bedroom
 Old Tom gin label, Liberty*



See Sarah's work at:

The Little Picture Palace
 Flat 2, 33 York Avenue,
 Brighton BN3 1PJ

In the Seven Dials trail
 (see page 66)

And at:

The Old Market
 11a Upper Market Street
 Hove BN3 1AS

24th April – 31st May
Weekdays: 13.00-17.00
 and when venue is open
 for performances
www.theoldmarket.com



MANUEL MATHIEU
The end of figuration
17 February–27 May

LAETITIA YHAP
An ending to a beginning
6 April–27 May
At the De La Warr Pavilion

LUCY EVETTS
The voice inside my head
3 May–14 July

At Flatland Projects
Beeching Road Studios
Just 10 mins walk
from the Pavilion



FREE EXHIBITIONS

Bexhill on Sea | www.dlwp.com

 **DE LA WARR
PAVILION**



Supported using public funding by
**ARTS COUNCIL
ENGLAND**



Travel information

Bus

www.buses.co.uk

Travelling around the city to the Artists Open Houses couldn't be easier with the Brighton & Hove Buses app, plan your journey and buy tickets all in one place.

<https://www.buses.co.uk/app>

For just £5 a day you can have unlimited travel on any Brighton & Hove Bus, including night buses. Tickets are available 24/7 and can be purchased to travel immediately or saved until later. Simply buy and activate your ticket, show the driver and away you go.

Contactless payments for bus journeys are also easy, just tap your card as you get on, and tap again when you want to get off.

Rail

www.nationalrail.co.uk

In addition to mainline services to London from Brighton Station, there are local services stopping at stations near Open Houses. Heading West to Hove, Aldrington, Portslade and Shoreham-by-Sea, North to Preston Park and Hassocks and East to London Road, Falmer, Lewes, Cookebridge and Newhaven

Beryl BTN Bikes

www.brighton-hove.gov.uk/travel-and-road-safety/beryl-btn-bikes

The BTN Bikeshare scheme was relaunched with *Beryl* in 2023. There are now 780 e-bikes in use, which can be hired from 100 hubs using the *Beryl* app. Use the link above for more information and to download the *Beryl* app.

Cars and Parking

www.brighton-hove.gov.uk/content/parking-and-travel/parking

Brighton & Hove City Council operates several off-street car parks and numerous on-street payed parking spaces across the city. Most on street parking is now operated through the PaybyPhone app. Download the PaybyPhone app from your app provider, or call **01273 458458** to register for phone payments if you don't have a smart phone. You can also pay using cash at a PayPoint. Find the nearest PayPoint at <https://www.paypoint.com/en-gb>

Brighton & Hove City Council has now completely removed all on street cash pay and display machines.

For the location of car parks visit <https://www.brighton-hove.gov.uk/parking/paid-parking/car-parks>

AppyParking is an app that shows all the on-street and off-street parking spaces available www.appyparking.com

If you have an electric car, you can use Zap Map to find your nearest on-street charge point. www.zap-map.com/live/

Opening times

Most Open Houses are open May weekends from 11.00-17.00, but opening times may vary, so it is best to check individual brochure listings. Some venues are also open on weekdays and Bank Holidays.

See our website for more information about listings and events: www.aoh.org.uk

How to use the brochure

The map on the following pages, shows venues broadly within the city. The listings for those venues are on pages 11 to 80. Listings and maps for the 24 venues in the surrounding area are on pages 81-96.

Information on opening times, opening dates and facilities offered by venues, are at the bottom of each listing.

Key to symbols

Venue listing details

Contact details
07777 123456
info@artist.co.uk
www.artist.co.uk

STUDIO-OR-WORKSHOP

Facilities offered details below

Days and dates not open
light type on white background

M	T	W	T	F	S	S
6	7	8	9	10	4	5
13	14	15	16	17	18	19
20	21	22	23	24	25	26
27	28	29	30	31		

Opening times
24hr clock
11.00 - 17.00

Days and dates open
bold white type on blue background

Facilities offered

- New venue - first year open
- Refreshments served
- Garden open
- Easy parking
- Live music
- Workshops/demonstrations
- Disabled access
- Card payment facility
- Tap water refill available
- Food served

Maps

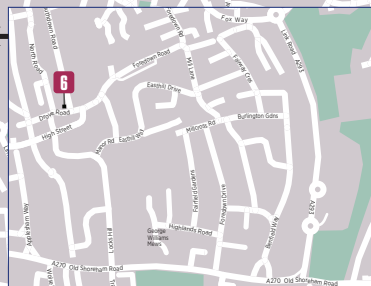
- Open House venues
- On trail maps, Open House venues from other trails
- Railway station
- Landmark building
- Church
- Car Parking
- Built up areas
- Park or urban green area
- Rural area
- Water

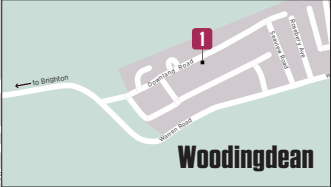
Access

The majority of houses are ordinary homes and may not have disabled access. Please look at the 'disabled access' section on our website for information on which houses are fully wheelchair accessible.



Hove





Brighton

Kemptown

9 BRIGHTON MARINA

Art & Exhibitions at Brighton Festival

Sat 4–Sun 26 May

Ooze Machines

Sat 4 May–Sun 30 Jun
Phoenix Art Space | Free

A seductive, repulsive exhibition from quantum physicist and award-winning visual artist Dr Libby Heaney.



Festival of Ideas: Remember When the Turner Prize Came to Sussex?



US
UNIVERSITY
OF SUSSEX

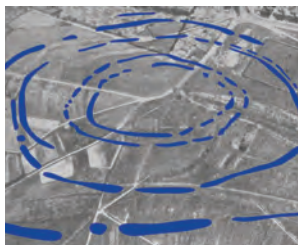
Fri 10 May | Attenborough
Centre for the Creative Arts
£10

A talk concluding the Turner Prize's time in Eastbourne, discussing how it went, its impact on the local area, and exciting future plans for the arts in East Sussex.

You Might Also Like

SOME TIMES

Sat 4 May
The Dance Space | Dance
A sensory journey through time, exploring neurodivergent ways of processing information.



Neolithic Cannibals: Deep Listening to the Unheard

Sat 4–Sun 19 May
Lighthouse | Free

A socially engaged soundscape and installation recreating the Whitehawk Hill Neolithic Camp. Created by Whitehawk-born sound artist Simon James with young people from the area.

An Elevated Platform

Sat 4–Sun 26 May
Brighton Dome | Free

Take to the stage on a platform that celebrates your every movement. Dysfunctional karaoke for the body.

Materia

Thu 23–Sat 25 May
Attenborough Centre
for the Creative Arts
Theatre
Performer and polystyrene duet in this beguiling piece of physical theatre.

Festival of Ideas:

Bird Bath Installation

Sun 5–Sun 12 May | St Peter's
Church, Preston Park | Free

Part meditation part sound installation, experience St Peter's Church filled with spring bird song, recorded locally.



US
UNIVERSITY
OF SUSSEX

Sozapato, Ilustración

Days of Wonder

Sat 4 May–Sun 1 Sep
Hove Museum of Creativity
Free

Celebrating the magic of early cinema and its spirit of creativity and innovation.

Carnesky's Showwomxn Sideshow Spectacular

Sat 25 & Sun 26 May | Elder
Place Corridor | Outdoor Circus
A ground-breaking outdoor spectacular featuring sideshow performers and Dave Pop artwork.

Beyond The Level



Beyond the Level celebrates thirty Open House years! One of the earliest trails, it has evolved into a diverse and eclectic creative community. The trail showcases work of practising artists, designers and makers in and around the rejuvenated London Road area. Stretching north and west of the Level recreation space, it extends from Hollingdean Road to meet the Fiveways trail, dropping down through the Roundhill conservation area to Preston Circus and the bustling London Road. Note that many venues now have card payment facilities, but some only accept cash. Some artists' homes may be unable to offer specialist access for disabled visitors, but will endeavour to offer appropriate assistance. Visitors are welcome to call houses and studios in advance to discuss specific requirements.

Instagram [@beyondthelevelofficial](https://www.instagram.com/beyondthelevelofficial)

Facebook <https://www.facebook.com/groups/beyondthelevel/>

X [@beyondthelevel](https://twitter.com/beyondthelevel)

Travel information

Walk: Much of the trail is flat and accessible on foot or bike

Bus: 5, 5A and 5B (Preston Circus), 26, 46 and 50 (Ditchling Road), 23, 24, 25, 28, 29 and 49 (Vogue Gyatory).

Rail: London Road station in the middle of the trail, has services to Brighton and Lewes. Brighton station is also close to the trail offering mainline services to London, Bedford, Southampton, Eastbourne, Lewes and Hastings.

Sponsor

Nick Ford Photography
nickfordphotography.co.uk

1 Wellbeing Hub at Preston Park

18 Preston Park Avenue, Brighton BN1 6HL

Brighton Swimmers: Caroline Carter @carolinecarterart



Shutdown Mental Health and Wellbeing Services, part of the UOK network, present a diverse and vibrant mix of art in our beautiful Wellbeing Hub, overlooking Preston Park. Showcasing the work of the many talented artists who use the service. We are again working with other UOK partners supporting people with their mental health and wellbeing across the city to display their artwork. Join us for art, coffee and cake in our café and fabulous garden! Open 11.00-14.30

01273 565049
www.uok.org.uk

COMMUNITY



11.00-14.30

M	T	W	T	F	S	S
		1	2	3	4	5
6	7	8	9	10	11	12
13	14	15	16	17	18	19
20	21	22	23	24	25	26
27	28	29	30	31		

2 Glass In Fusion

Unit 9 Beaconsfield Studios,
25 Ditchling Rise, Brighton BN1 4QL



Brighton Bands/and - Tealand Gold:
Stephanie Else/Glass In Fusion

Stephanie warmly welcomes you to Glass In Fusion – a fabulous glass studio showcasing her vibrantly beautiful glass artworks, gifts and jewellery. On display will be award-winning glass panels and iconic Brighton In Glass framed tiles, alongside

stunning enamel compositions and ceramic sculptures.

A fantastic feast for the eyes – we look forward to seeing you!

Stephanie Else Glass

Romi Shadler Reingold

Ceramics and enamels

07887 975818

stephanie@glassinfusion.co.uk
www.glassinfusion.co.uk

STUDIO-OR-WORKSHOP



11.00-17.30

M	T	W	T	F	S	S
		1	2	3	4	5
6	7	8	9	10	11	12
13	14	15	16	17	18	19
20	21	22	23	24	25	26
27	28	29	30	31		

3 Milton House

72 Clyde Road, Brighton BN1 4NP



Work from Milton House Artists with Bob the Kitten

Sarah Jones Prints

Nikki Ward Butterfly boxes

Holly Berry Hand woven textiles

Suzanne Breakwell

Sculptural ceramics

Madame Treacle Cards and gifts

Anne Barrell Ceramics

Sian Jones Ceramics

Scofinn Homewares

Helen Rankin Jewellery

Under Wraps Art

Printed T-shirts

Lesley Bisseret Cushions

Plantwerker

Pampering products

Becky Crow Illustrative jewellery

07815 208755

sarahjonesprints@gmail.com
www.sarahjonesprints.com

HOUSE



11.00-17.00

M	T	W	T	F	S	S
		1	2	3	4	5
6	7	8	9	10	11	12
13	14	15	16	17	18	19
20	21	22	23	24	25	26
27	28	29	30	31		

4 Cats Creep

10 Richmond Road, Brighton BN2 3RN



Pink Poppy, Green. (Gouache on Paper);
Roberta Young

Three floors of paintings, prints, photography, inks, comics, jewellery, ceramics and sculpture. This year come and explore the garden for stunning stone sculptures and refreshments in the studio.

Elpida Hadzi-Vasileva

Wall Works

Guy Stevens *Sculpture*

Martine Jans *Jewellery*

Georgia Sawers

Ceramics

Zara Slattery *Illustration*

Dirk Engels

Turned wood

Isaac Young *Inks*

Roberta Young

Paintings

Xavier Young

Photography

07991 580275

robertayoungartist@icloud.com

www.instagram.com/catscreep_aoh

HOUSE

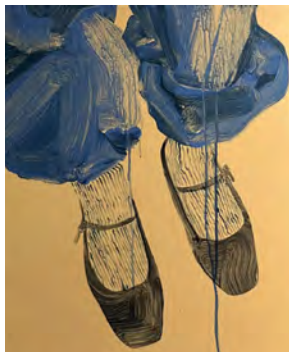


M	T	W	T	F	S	S
	1	2	3		4	5
6	7	8	9	10	11	12
13	14	15	16	17	18	19
20	21	22	23	24	25	26
27	28	29	30	31		

11.00-17.00

6 Studio Two

2 Park Crescent, Brighton BN2 3HA



Cinecittà Sandals; Fiona Gellinger

Fiona Gellinger *Paintings*

Lisa Jansen *Textile art*

You are warmly invited to **Fiona Gellinger's** elegant artist's studio and living room, opened for the first time, as contrasting spaces in which to see her contemporary figurative paintings. 2023 Royal Academy Summer Exhibition exhibitor. Artist **Lisa Jansen** is also exhibiting her textile art works. Cake and refreshments will be available.

We look forward to meeting you.

07970 655014

fiona.gellinger@me.com

fionagellinger.co.uk

HOUSE



M	T	W	T	F	S	S
	1	2	3	4	5	
6	7	8	9	10	11	12
13	14	15	16	17	18	19
20	21	22	23	24	25	26
27	28	29	30	31		

11.00-17.00

5 Studio 27

27 Park Crescent Terrace, Brighton BN2 3HD



Kathryn Lang / Relove Stuff / Born Makers



Kathryn Lang / Relove Stuff / Born Makers

Studio 27 is a shared workshop and studio for artists and makers. This year we will be showing a wide selection of paintings, prints, jewellery, small leather goods, upholstered seating, homeware and bespoke furniture. Please check our

social media for additional events during the month.

Kathryn Lang

Relove Stuff

Born Makers

Bessie Millar

Thea Wates Designs

07732 854324

studio@bornmakers.uk

@27pct_studio

STUDIO-OR-WORKSHOP



M	T	W	T	F	S	S
	1	2	3	4	5	
6	7	8	9	10	11	12
13	14	15	16	17	18	19
20	21	22	23	24	25	26
27	28	29	30	31		

11.00-17.00

7 North Star Studios Ltd.

65 Ditchling Road, Brighton BN1 4SD



North Star Studios: Ann March

Established in 1978, Brighton's longest running printmaking and photography co-operative studios

- Patrick Madden** *Printmaking*
- Christina Smith** *Photography*
- Juliet Kac** *Printmaking*
- Kat Elliott** *Printmaking*

Georgi Payne *Printmaking*
Saskia Richmond *Printmaking*
Ann March *Printmaking*
Fiona McWilliam *Printmaking*
 Shared facilities available 24/7. Applications for membership invited.

07742 653957

northstarprintmakers@gmail.com
 northstarstudio.wordpress.com

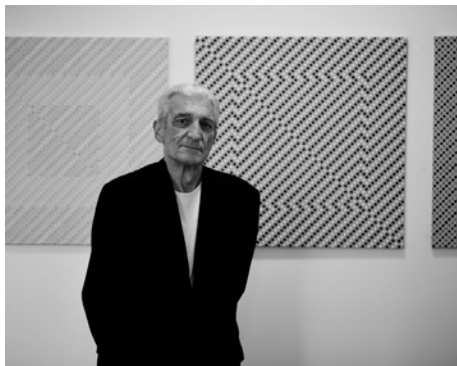
STUDIO-OR-WORKSHOP



							11.00-17.00	
M	T	W	T	F	S	S		
		1	2	3	4	5		
6	7	8	9	10	11	12		
13	14	15	16	17	18	19		
20	21	22	23	24	25	26		
27	28	29	30	31				

8 Rose Hill Court

Rose Hill Court, Rose Hill Terrace, Brighton BN1 4HS



John Morfett: Joe Carroll

Joe Lanie and assorted others from the residents Wednesday workshops.

07905 586657

elaine.copper@gmail.com

COMMUNITY



							12.00-16.00	
M	T	W	T	F	S	S		
		1	2	3	4	5		
6	7	8	9	10	11	12		
13	14	15	16	17	18	19		
20	21	22	23	24	25	26		
27	28	29	30	31				

8 Oxford Street Studio

Nick Ford Photography, 19 Oxford Street, Brighton BN1 4LA

BrighTen Years. This interactive photographic exhibition, brings into focus what makes this City special for Brighton born photographers, **Nick Ford** and **Michael Stone**. Between them they have woven 35 years of photographic experience into an immersive landscape of Brighton landmarks. May 2024 marks 10 years since Nick opened the doors to his Oxford Street Studio, so please do come along to celebrate this milestone!



Terrace Tiles: Nick Ford and Michael Stone

Nick Ford *Photography*
Michael Stone *Photography*

01273 683867

studio@nickfordphotography.co.uk
 nickfordphotography.co.uk

STUDIO-OR-WORKSHOP

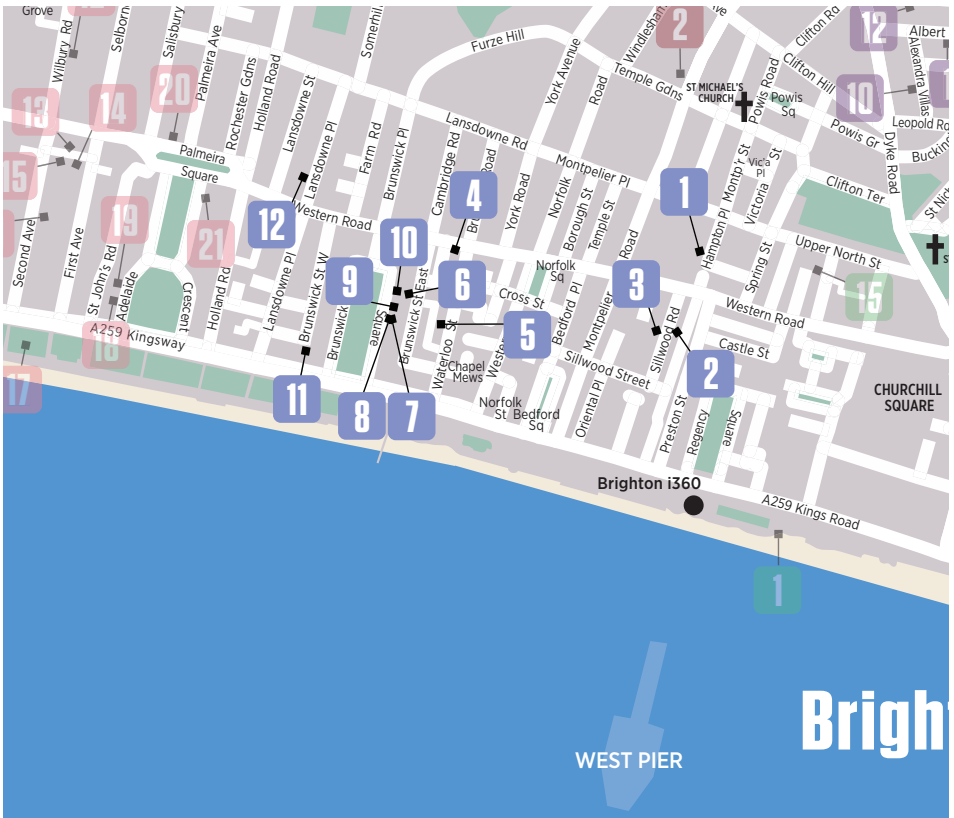


							10.00-17.00	
M	T	W	T	F	S	S		
		1	2	3	4	5		
6	7	8	9	10	11	12		
13	14	15	16	17	18	19		
20	21	22	23	24	25	26		
27	28	29	30	31				

UNearthED
 GALLERY
VICTOR VASARELY
EDUARDO PAOLOZZI
GUSTAVE SINGIER
DAVID HOCKNEY
GRAHAM SUTHERLAND
AND MANY MORE

Selling and sourcing a dynamic collection of works curated with passion and personality
 - Works include original hand-signed editioned prints, original posters and advertising artwork.

unearthedart.co.uk



Brunswick Town Trail is on the border of Brighton and Hove by the seaside. Our largest trail for some years, featuring twelve open houses showcasing almost a hundred artists including a variety of events (see AOH Events page, listings and websites for details). Make a day of it to meet the artists and makers, explore the historically and architecturally fascinating Brunswick Town Conservation Area, visit the seafront for a blast of fresh sea air and a flight on the i360. As a distraction from the trail there are a number of lovely pubs and cool cafes.

Travel information

Bus: Catch any bus running towards Western Road and you will quickly find yourself in the heart of the trail. (1, 1A, 2, 2A, 5, 5A, 5B, 6, 24, 25, 46, 49, 49A, 81).

Train: From Brighton station, just hop on the number 6 bus towards Hove.

Car: Pay by phone parking is available on most streets in the area.

Walk: The trail is compact and easily walkable.

1 Anniek Verholt – Abstract Art

25A Hampton Place, Brighton BN1 3DA



"Warm Yellow", 2024, oil on canvas paper, 20 x 25cm.
Anniek Verholt

If you're interested in abstract art and enjoy the colour yellow, you should view the latest collection of original abstract paintings by multidisciplinary artist Anniek Verholt, ranging from expansive canvases to intimate small works,

inspired by the dynamic interplay of light and psychology of colour. Even on a rainy day expect uplifting colours, great energy and the opportunity to purchase directly from the artist. Check her instagram for a pre-view and glimpse of her process.

info@anniekverholt.com

www.instagram.com/anniekverholt_artist

HOUSE



							11.00-17.00	
M	T	W	T	F	S	S		
		1	2	3	4	5		
6	7	8	9	10	11	12		
13	14	15	16	17	18	19		
20	21	22	23	24	25	26		
27	28	29	30	31				

2 Joy

14 Sillwood Road, Brighton BN1 2LF



Joy: Ewan Clayton

Ewan Clayton's beautiful four storey calligraphy studio opens its doors to the exhibition of a new photography book by former student **Nigel Swallow**. The Joy of Being Brighton features 200 images of the city at play – interwoven at this exhibition with examples of the studio's world-renowned mastery and love of lettering curated by **Megan Maksimovich Goodenough**.

(+ Draw/write/send your own joyous greeting card – post box provided!)

Free refreshments to enjoy in the kitchen or on the balcony.

07539 456309

info@brightoncalligraphy.com

www.brightonjoy.com

STUDIO-OR-WORKSHOP



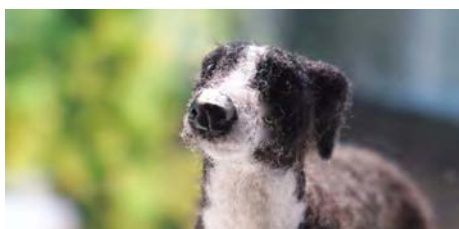
							10.30-17.30	
M	T	W	T	F	S	S		
		1	2	3	4	5		
6	7	8	9	10	11	12		
13	14	15	16	17	18	19		
20	21	22	23	24	25	26		
27	28	29	30	31				

3 The DOG SHOW

33 Sillwood Road, Brighton BN1 2LE



Lurcher: Sally Muir



Weimarer: Felicia Fido

If you love dogs, you will love this Open House, filled with over 200 pieces of the very best dog art

- Josse Davis** Ceramics
- Sally Muir** Painting
- Joanna Osborne** Ceramics
- Felicia Fido** Needle felting
- Gemma Rees** Sculpture
- Sophie Thurlow** Painting
- Justine Osborne** Ceramics
- Bridget Baker** Sculpture
- Violet Von Riot** Collage
- Bow Wow Sketch** Painting
- Lorraine Corrigan** Sculpture

07841 015078

joannamosborne@gmail.com

www.thedogshowbrighton.com

HOUSE



Lost and Foundry Lighting

Lorna Brown sculpture

Special events (please see our website for details)
On The Spot Dog Drawing by Sally Muir – 18th May
Booking essential

Edie's Raffle in aid of Street Vet, prizes donated by dog show artists. Tickets on sale at The DOG SHOW

Dog soundscape by composer, **Orlando Gough**

Orlando's cafe will be serving tea and delicious cakes

							11.00-18.00	
M	T	W	T	F	S	S		
		1	2	3	4	5		
6	7	8	9	10	11	12		
13	14	15	16	17	18	19		
20	21	22	23	24	25	26		
27	28	29	30	31				

4 HERA Arts, Health & Wellbeing

WellBN Brunswick, 18-19 Western Road, Hove BN3 1AE

HERA (Healing Expressive and Recovery Arts) is a network of programmes using arts and creative activities to enhance the quality of our lives, health and wellbeing. The creative activities are specifically designed to improve the functional health and wellbeing of HERA participants living with physical and/or mental concerns.

The HERA exhibition celebrates and showcases art works created by HERA project participants, and the accompanying events offer taster sessions open to all.

Email or call us (see info below) for more information or to attend HERA events.

The HERA exhibition is open to the public during May 2024, 10am to 5pm, Monday to Friday, at the following participating GP practices:

WellBN Brunswick, BN3

WellBN Benfield, BN41

WellBN Burwash, BN3

Trinity Medical Centre, BN3,

Wellsbourne Healthcare, BN2

Please check each surgery's website for exact opening hours and address.



Dreaming Further - Shirley, HERA project participant



Untitled - Silvy, HERA project participant

01273 712175

contact@robinhoodhealth.org

www.wellbn.co.uk/healing-arts/hera

COMMUNITY



							10.00-17.00					
M	T	W	T	F	S	S						
			1	2	3	4	5					
6	7	8	9	10	11	12						
13	14	15	16	17	18	19						
20	21	22	23	24	25	26						
27	28	29	30	31								

5 Waterloo street

15 Waterloo street, Flat 3, Hove BN31AG



Scebba Marco

Scebba Marco

Ballpoint pen and marker pen

07541400306

scebbamarco86@gmail.com

Instagram: marcoscebb_art

HOUSE



							11.00-17.00					
M	T	W	T	F	S	S						
			1	2	3	4	5					
6	7	8	9	10	11	12						
13	14	15	16	17	18	19						
20	21	22	23	24	25	26						
27	28	29	30	31								

6 Imaginarium Atelier

The Jewellery Workshop, 52 Brunswick Street East, Hove BN3 1AU



Masquerade rings: Imaginarium Atelier

Step into the Jewellery Workshop, a captivating hub resembling a treasure trove of curiosity.

Explore the artisans' benches, adorned with the tools of their trade, complemented by intricate drawings and paintings fuelling their creative endeavours.

Imaginarium Atelier seamlessly blends traditional goldsmithing with art jewellery, resulting in timeless and truly unique sculptural pieces. Unveiling a stunning array of precious jewellery, elegant and daring designs imbued with a hint of enchantment. Discuss bespoke commissions directly with the makers.

Sylvaine Frouin Jewellery

Marek Machlowski Jewellery

01273 782220

info@imaginariumatelier.com

www.imaginariumatelier.com

STUDIO-OR-WORKSHOP

							10.00-17.00					
M	T	W	T	F	S	S						
			1	2	3	4	5					
6	7	8	9	10	11	12						
13	14	15	16	17	18	19						
20	21	22	23	24	25	26						
27	28	29	30	31								

7 This Is The Seventh Wave

Regency Town House, 13 Brunswick Square, Hove BN3 1EH



Love is the Seventh Wave (detail) 2024: Dee Ferris

This Is The Seventh Wave is a hopeful show about transformation and belonging, which brings together a group of international but locally-based artists for whom the sea, and specifically the sea of Brighton and Hove, has come to constitute a strong source for creation and dialogue.

Referring to the idea that in a set of waves, the seventh one will always be the strongest, it offers up the ocean as a site for (human and more-than-human) collaboration and connection, not only a place of reflection and becoming, but a call to action on issues such as climate futures/pasts, migration and sustainability.

Curated by Dee Ferris and Judy Stevens

- Polly Arnett
- Nicholas Carrick
- Emma Critchley
- Dee Ferris
- John Haywood
- Solange Leon Iriarte
- Andre Lichtenberg
- Alejez
- Catalina Mejia Moreno
- Judy Stevens
- Francisca Vidal Vergara
- + Pulso Austral
- Arantza Vilas
- Carole Villain
- Jonathan Wright

Also open Friday 3rd May. Other week days by appointment.

Supported by *Bred + Wolf / Wolfox, Wine Barrel and Richer Sounds*

deeferris@me.com

							11.00-17.00					
M	T	W	T	F	S	S						
			1	2	3	4	5					
6	7	8	9	10	11	12						
13	14	15	16	17	18	19						
20	21	22	23	24	25	26						
27	28	29	30	31								

GALLERY



8 Red Herring@Regency Town House

Regency Town House, 13 Brunswick Square, Hove BN3 1EH



Shoaling Poster @ Red Herring Studios



Regency Town House @ Red Herring Studios

Shoaling brings together work by 15 artists and makers from Red Herring Studios (based in Portslade) in the glorious Regency Town House. Red Herring is an artists' cooperative that has been providing working space for artists and other initiatives around Brighton & Hove for 39 years. *Shoaling* is the first collectively curated exhibition of the studios' current iteration. The exhibition unites and explores the range of practices and approaches represented by the group, celebrating the richness and diversity of ideas and media and responding to the building. *Shoaling* also offers a programme of talks/workshops - Visit our website for booking information.

- Andy Ash
- Bryn Pratt-Boyden
- Bryony Rumble
- Christopher McHugh
- Elizabeth Bourne
- Helen Rebecca Lucas
- Julie Sharman
- Katy Schnetter
- Louis TF
- Mattie Griffiths
- Nick Gardner
- Ratna Jan Bibi
- Rebecca Angel
- Tracy Roberts
- Trisha Stone

Practices include: *Painting, Sculpture, Textiles, Ceramics, Mixed media, Paper and books, Drawing.*

01273 413355
info@redherringstudios.org
www.redherringstudios.org/artists

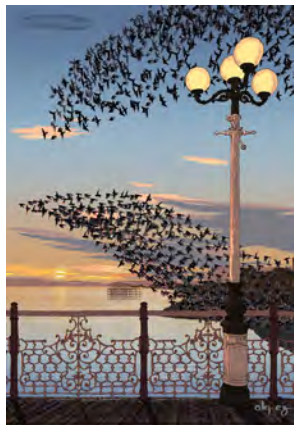
GALLERY



							Mo-Th 11.00-16.00, Fr-Su 11.00-18.00					
							(Su 26th May 11.00-16.00)					
M	T	W	T	F	S	S						
			1	2	3	4	5					
6	7	8	9	10	11	12						
13	14	15	16	17	18	19						
20	21	22	23	24	25	26						
27	28	29	30	31								

9 Alejez art & Barry's artefacts

Flat 5, 16 Brunswick Square, Hove BN3 1EH



Palace Pier Lights Starling Murmuration: alejez

Two neighbourly venues. Upstairs find alejez art, my very own artist residence. At the ground floor flat, browse through Barry's World curiosities and treasures. Be the first to see my new body of work of light and colour through loved landscapes of the South Downs, captivating coastal scenes, formal fun architectural prints and more. I work from my original monochrome drawing with digital pigment added to make limited edition prints. Love life, love art!

07946 381116

alexw2@hotmail.com
alejez.com/

HOUSE



	M	T	W	T	F	S	S
			1	2	3	4	5
	6	7	8	9	10	11	12
	13	14	15	16	17	18	19
	20	21	22	23	24	25	26
	27	28	29	30	31		

11.00-17.00

11 Cuba Libre

13 Brunswick Street West, Hove BN3 1EL



Kaleidoscope: Alberto Martinez

On view, a series of surrealist paintings and English landscapes with a twist. Incorporating our native Cuban colours in to local imagery. The thrill of life and the outdoors. Now on our second show, we aim to entertain you.

07772 384762

albertox77@yahoo.com
www.albertomartinez.co.uk

HOUSE

	M	T	W	T	F	S	S
			1	2	3	4	5
	6	7	8	9	10	11	12
	13	14	15	16	17	18	19
	20	21	22	23	24	25	26
	27	28	29	30	31		

11.00-17.00

10 21a Brunswick Square

21A Brunswick Square, Hove BN3 1EJ



Never stop playing: Stoats & Weasels

Modern, bright, stylish designs for the wall, body and home. Illustration, jewellery, homewares, photography, textiles, printmaking, decorations, plus lots of gift items and greeting cards. Plus you can enjoy refreshments in our sunny courtyard garden.

Stoats & Weasels

Graphic art

hello Dodo Graphic art

Laura Danby Jewellery

GRD Design Jewellery

We are Mountain

Homewares

Alex Bamford Photography

From Brighton with Love

Textiles

AndMash Homewares

WoahTherePickle

Printmaking

07796 664912

lisa@stoatsandweasels.com
www.stoatsandweasels.shop/aoh

HOUSE



	M	T	W	T	F	S	S
			1	2	3	4	5
	6	7	8	9	10	11	12
	13	14	15	16	17	18	19
	20	21	22	23	24	25	26
	27	28	29	30	31		

11.00-17.00

12 Dinah Duffon Art & Alchemy

Flat 1 (Buzzer 1), 71 Lansdowne Place, Hove BN3 1FL



FLUX Vessel: Dinah Duffon.
Upcycled plastic water bottle

Interdisciplinary artist working with visual art, artefacts and perfume. Celebrating nature and our complex contemporary relationship to it. Serene and meditative works.

dinahspace@gmail.com

www.dinahduffon.com

HOUSE



	M	T	W	T	F	S	S
			1	2	3	4	5
	6	7	8	9	10	11	12
	13	14	15	16	17	18	19
	20	21	22	23	24	25	26
	27	28	29	30	31		

11.00-17.00

£5 OFF!

**WHEN YOU SPEND £30 ON ART SUPPLIES
AT OUR BRIGHTON STORE - 21 MARKET STREET, BN1 1HH**

Terms & Conditions: This voucher entitles the bearer to £5 off when £30 or more is spent in a single transaction, valid only at Cass Art Brighton Store. Voucher can only be redeemed once per person. Cannot be used on special promotional days, in conjunction with any other offer, Student or Viridian discount, or for the purchase of gift vouchers or event tickets. Offer valid before store closes on 23rd December 2024. Store use. Code A0H24. Redeemed: [redacted]

THIS IS MAUVE

IS PROUD TO SUPPORT THE ARTISTS OPEN HOUSES

We help Artists and Creative Businesses find Clarity & Confidence by building purposeful Brand Identities, Websites & Social Media strategies that are designed to leave a Lasting Impact.

hello@thisismauve.co.uk
 +44 75302 56064
 www.thisismauve.co.uk



Central Brighton, with its thriving tradition as home of talented artists and one of the country's best art colleges, also boasts the longest established life drawing venue, The Sussex County Arts Club. The Fishing Quarter Area, between the piers, offers a hive of working artists in underground arches and independent galleries supporting local creatives. When you meander through the old narrow fishing lanes with your open AOH brochure in hand, keep your eyes peeled for the distinctive Artists Open House banners. Each venue will have something special inside; from carefully selected, hand-made pottery, textiles and jewellery to story-telling, puppetry, local scene paintings and interactive activities. Please take time to stop, chat and meet the artists.

Travel information

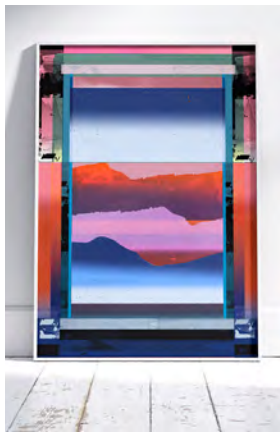
Walk: through the North Laine south to The Lanes and along the seafront Fishing Quarter Area, east to west.

Bus: all routes to North Street, Clock Tower and Churchill Square

Car: numerous car parks from Brighton Station, Trafalgar Street, RCP North Road, NCP Russell Road, The Lanes, Black Lion Street, Churchill Square off West Street and Regency Square,

1 Unlimited

100-102 Kings Road Arches,
Lower Promenade, Brighton BN1 2FN



Hue: Angus Vasili

Come and see our show of fantastic new artworks by collage and print artist **Angus Vasili** and showcase of stunning new ceramic vessels by **Anna Carlson**, alongside our gallery's colourful curated collection of works from super-talented independent designers and makers. Now in its 14th year of championing like-minded creatives, Unlimited gallery and design shop continually brings you a diverse and playful range of graphic artworks, jewellery, homewares, textiles and more!

hello@unlimitedshop.co.uk
www.unlimitedshop.co.uk
www.instagram.com/unlimitedshopuk

GALLERY



10.30-16.30 (11.00-16.00 Su & Bank Hols)

M	T	W	T	F	S	S
		1	2	3	4	5
6	7	8	9	10	11	12
13	14	15	16	17	18	19
20	21	22	23	24	25	26
27	28	29	30	31		

2 The Open Studios

168 Kings Road, Seafront, Brighton BN1 1NB



The Open Studios Brighton Seafront

The Open Studios is the oldest working art studio in Brighton, situated in a former boatyard on the seafront. Housing a variety of local artists, working in different styles and mediums.

You'll be warmly welcomed with a wealth of affordable art for sale. Visit our atmospheric space to see a slice of Brighton's artistic heritage.

07833 220795
openstudiosbrighton@gmail.com
www.instagram.com/openstudiosbrighton

GALLERY



10.00-18.30

M	T	W	T	F	S	S
		1	2	3	4	5
6	7	8	9	10	11	12
13	14	15	16	17	18	19
20	21	22	23	24	25	26
27	28	29	30	31		

3 Sugg and Davidson

198 Kings Road Arches, Fishing Quarter, Brighton BN1 1NB



Sugg & Davidson: Miniature theatres, puppetry and theatre props have relocated, with great excitement, to an arch within the old Fishing Quarter area near the museum. With more space to display and create our artworks which include locally themed theatre kits, illustrated cards, children's books and tarot cards.

Philip Alexander Sugg
Amanda Rosenstein Davidson

07960 868847
artsugg@yahoo.co.uk
www.puppet-theatres-brighton.com

STUDIO-OR-WORKSHOP

11.00-16.00

M	T	W	T	F	S	S
		1	2	3	4	5
6	7	8	9	10	11	12
13	14	15	16	17	18	19
20	21	22	23	24	25	26
27	28	29	30	31		

4 Wildlife Crossing at Stanley Road Store

54-55 Market Street, Brighton BN1 1HH



Wildlife Crossing - Sylwia Liszek

Wildlife Crossing presents a multi-media group show, displayed within the exciting walls of Brighton's biggest makers' department store. The exhibition will demonstrate the myriad ways in which contemporary artists have addressed aesthetic, political

and philosophical concerns in everyday life. Wildlife Crossing will also use the past and the present as fuel, whether by innovating new forms of abstract art, rethinking the conventions of love and loss, or challenging the status of craft.

COMMERCIAL-PREMISES

11.00-16.00

M	T	W	T	F	S	S
		1	2	3	4	5
6	7	8	9	10	11	12
13	14	15	16	17	18	19
20	21	22	23	24	25	26
27	28	29	30	31		

5 Story Maps

2 Hanningtons Lane, Brighton BN1 1GS



Long Man of Wilmington:
Collaboration AOH 2023

Learning disabled, autistic and neurodivergent artists from the Figment Arts Studio are exploring the rich and varied folklore of the local area.

We are working with Worthing, Newhaven and Hastings museums with support from University of Chichester's Centre for Folklore and Fairytales.

Drop in to see our exhibition, browse our pop-up folklore library, and take part in our collaborative painting.

Story Maps is funded by National Lottery Heritage Fund, with support from Brighton Fringe and Hanningtons Library.

info@figmentarts.co.uk
www.figmentarts.co.uk
www.instagram.com/figmentarts/

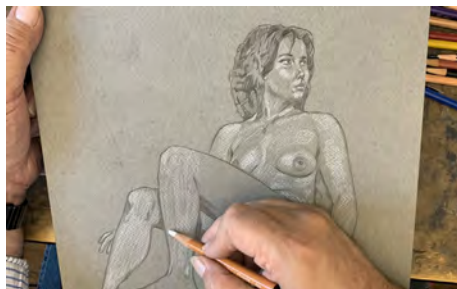
COMMERCIAL-PREMISES



							11.00-16.00		
M	T	W	T	F	S	S			
6	7	8	9	10	11	12			
13	14	15	16	17	18	19			
20	21	22	23	24	25	26			
27	28	29	30	31					

7 Sussex County Arts Club

3 Bond Street Cottages, Bond Street, Brighton BN1 1RP



Sketch during a session: Ian Miller

The Sussex County Arts Club's annual summer exhibition showcases artwork produced by club members in a variety of media, much of it created during some of the many sessions run throughout the year at the club.

We offer a variety of sessions for all abilities from beginners to professionals.

Please check our website for more details.

07708 870791
info@sussexcountyartsclub.co.uk
www.sussexcountyartsclub.co.uk

COMMUNITY



							13.00-17.00		
M	T	W	T	F	S	S			
6	7	8	9	10	11	12			
13	14	15	16	17	18	19			
20	21	22	23	24	25	26			
27	28	29	30	31					

6 Jules Emporium

Jules Emporium, 5 New Road, Brighton BN1 1UF



Jules Emporium is a gallery and shop offering a mix of original art, prints and unique gifts. Discover a wide selection of artworks, jewellery, ceramics, candles, cards, vintage apparel, textiles and homeware, plus a touch of the curios over three rooms.

Showcasing artists and makers from Brighton and beyond, Jules Emporium has been carefully curated to exhibit an amazing wealth of talent in the heart of Brighton's cultural quarter. An Aladdin's cave waiting to be explored.

julesemporium@outlook.com
www.instagram.com/jules_emporium

GALLERY



							11.00-17.00		
M	T	W	T	F	S	S			
6	7	8	9	10	11	12			
13	14	15	16	17	18	19			
20	21	22	23	24	25	26			
27	28	29	30	31					

8 Tichborne Projects

18 Tichborne Street, Brighton BN1 1UR



Tichborne Projects gallery space: Alex Jones

Brighton has always been known as a culturally diverse city with a rich artistic presence. Tichborne Projects was born out of the desire to promote artists working in a range of mediums and subject matters. Brighton Salon brings together a wide variety of artists, from those publicly presenting their work for the first time to experienced and established artists. The work presented reflects the diversity of the city, with the conceptual placed alongside the pictorial.

tichborneprojects@gmail.com
www.instagram.com/tichborne_projects

GALLERY



							11.00-16.00		
M	T	W	T	F	S	S			
6	7	8	9	10	11	12			
13	14	15	16	17	18	19			
20	21	22	23	24	25	26			
27	28	29	30	31					

9 J David Bennett @LeoFrames

LeoFrames, 70 North Road, Brighton BN1 1YD



Brighton Marmite Cushion: J David Bennett

LeoFrames are delighted to be opening up our gallery space to the colourful illustrator **J David Bennett**. In his first ever solo show, he will be debuting brand new work alongside his ever

popular saucy Brighton prints, humorous maps, charts and collections.

We also have a wide variety of art prints by local and national artists in our permanent gallery.

art.rascal.uk@gmail.com
www.arrascal.com
www.instagram.com/jdavidbennett

09.30-17.00 (Su 11.00-16.00)

M	T	W	T	F	S	S
		1	2	3	4	5
6	7	8	9	10	11	12
13	14	15	16	17	18	19
20	21	22	23	24	25	26
27	28	29	30	31		

GALLERY



11 I Drew This Shop

3 Kensington Place, Brighton BN1 4EJ



I Drew This Shop is the super colourful new gallery shop featuring unique designs, gifts and homewares by artist/owner Ilona Drew and a carefully curated selection of products by UK artisans and makers.

This stunning new venue is a treasure trove of vibrant hues from the beautiful window displays, inside decor, to the artworks and products themselves. Stop by and say hi and bring your furry pals, dogs can get a free treat!

01273 751210
info@idrewthis.co.uk
www.idrewthis.co.uk

10.00-17.00 (Su 11.00-16.00)

M	T	W	T	F	S	S
		1	2	3	4	5
6	7	8	9	10	11	12
13	14	15	16	17	18	19
20	21	22	23	24	25	26
27	28	29	30	31		

GALLERY



10 Owen Gildersleeve & Friends

7 Orange Row, Brighton BN1 1UG



HELLO: @ Owen Gildersleeve 2024

For the first time, illustrator and papercut artist **Owen Gildersleeve** will be opening up his studio in central Brighton. He'll be accompanied by a special selection of local artists: **Michael Driver, Lizzie Lomax, Will Richards, and Olivia Waller.**

Across the mezzanine studio, each artist will be displaying original work, limited edition prints, apparel and more – all of which will be available to purchase.

Join us at 7 Orange Row for some illustration and hopefully sunny weather!

hello@owengildersleeve.com
www.instagram.com/owengildersleeve/
www.owengildersleeve.com

Sa 10.00-17.00, Su 11.00-17.00

M	T	W	T	F	S	S
		1	2	3	4	5
6	7	8	9	10	11	12
13	14	15	16	17	18	19
20	21	22	23	24	25	26
27	28	29	30	31		

STUDIO-OR-WORKSHOP



12 2 Gloucester Road

2 Gloucester Road, Brighton BN1 4AD



Mike Dicks in his Open House: Mike Dicks

Tucked away in the North Laine area my home is my studio. See a selection of my prints of Brighton-focussed surreal architecture, political cartoons and artworks and books.

Surreal Architecture
The Brighton Laine
Trumpton - Satire
Cards, books and badges

07703020847
mikedicks@outlook.com
www.mikedicksart.com

10.00-17.00

M	T	W	T	F	S	S
		1	2	3	4	5
6	7	8	9	10	11	12
13	14	15	16	17	18	19
20	21	22	23	24	25	26
27	28	29	30	31		

HOUSE



13 Brighton MET

1A Pelham Street, Brighton BN1 4FA



Box Fresh: Brighton MET Level 3 Art, Design and Communication students present a C21st take on Joseph Cornell's worlds in boxes. Exploring the following themes: portraits, travel, birds, childhood, space, the sky at night, film stars, buildings, cities, artists,

01273 667788

enquiries-brighton@gbmc.ac.uk

www.instagram.com/uavlevel3_diplomaext_artdesign

EDUCATIONAL-INSTITUTION



they have created imaginative responses to Cornell's work. Explore over 80 works which entertain, challenge and amuse, each showcasing the diverse talents, interests and concerns of our students.

							10.00-16.00				
M	T	W	T	F	S	S					
		1	2	3	4	5					
6	7	8	9	10	11	12					
13	14	15	16	17	18	19					
20	21	22	23	24	25	26					
27	28	29	30	31							

15 Gicleexpress Artists Open House

13 Marlborough Street, Brighton BN1 3EE



Visit London Zoo: Brian Grimwood

Brighton's one and only artist development agency – also leading art printers, framers and branding consultants – proudly presents Gicleexpress Open House 2024.

Showcasing luminaries such as Brian Grimwood (Central Illustration Agency) and Phil Taylor (v23 / 4AD Records) to emerging artists including Emmy award winning Simon George. Come and join us for a creative shot in the arm!

- Brian Grimwood
- Simon George
- Stevie Purcell
- Fraser Geesin
- Senisara
- Robert Grist
- theX.art
- Jack from Afar
- Bobby Dazzler
- Phil Taylor
- Clive Sefton

07980 271563

info@gicleexpress.com
gicleexpress.com

HOUSE



							12.00-17.00				
M	T	W	T	F	S	S					
		1	2	3	4	5					
6	7	8	9	10	11	12					
13	14	15	16	17	18	19					
20	21	22	23	24	25	26					
27	28	29	30	31							

14 Matt Noir at Gallery 40

40 Gloucester Road, Brighton BN1 4AQ



Communication Object 6 & Gravity: Matt Noir

Matt Noir investigates the symbolic power of objects and how they are bestowed with meaning. His work explores the connections that are derived from the viewer's relationship with the objects and encourages a dialogue between the two.

He is particularly interested in devices of communication and works with vintage pieces.

Exhibition runs from

Wednesday 22nd May until Sunday 2nd June.

www.mattnoir.co.uk

www.instagram.com/mattnoirartist

GALLERY



							11.00-18.00				
M	T	W	T	F	S	S					
		1	2	3	4	5					
6	7	8	9	10	11	12					
13	14	15	16	17	18	19					
20	21	22	23	24	25	26					
27	28	29	30	31							

16 Haus of KAKA

7 Bartholomews, Brighton and Hove BN1 1HG



This eclectic HAUS features a diverse group of artists who will bring you into their twisted realm.

- Karl Allen *Mixed media*
- Haus of Lucy *Ceramics*
- Bruno Sibona *Sculpture*
- Tristan Lathey *Ceramics*
- Cathy Page *Painting*
- Saint Sims *Photography*

07563 076224

filmwerq@gmail.com

HOUSE



							11.00-18.00				
M	T	W	T	F	S	S					
		1	2	3	4	5					
6	7	8	9	10	11	12					
13	14	15	16	17	18	19					
20	21	22	23	24	25	26					
27	28	29	30	31							

WEST  DEAN

MAKE TIME FOR CREATIVITY

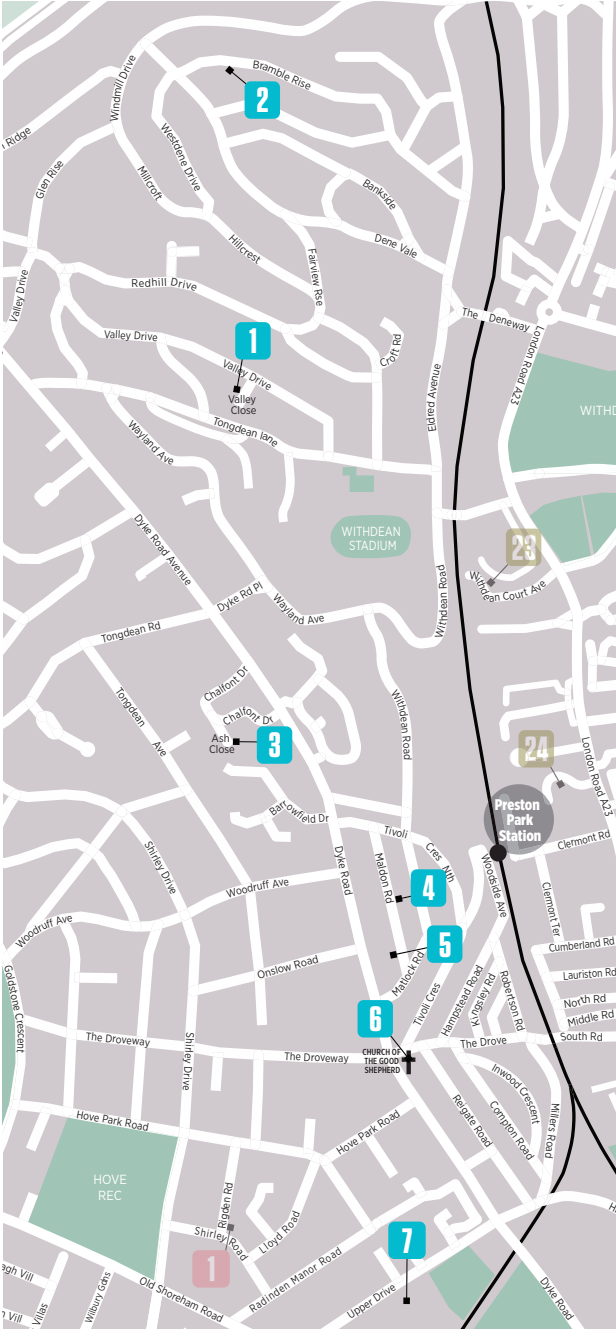
Whatever your craft, whatever your level,
there is a short course for you at West Dean.

Learn from expert tutors in inspirational surroundings,
or study in your own time with distance learning.

Be inspired at [westdean.ac.uk](https://www.westdean.ac.uk)



Dyke Road



Welcome to **Dyke Road Arts** where you'll find a friendly ambience and beautiful work by an exciting range of talented artists and makers, this year introducing several new venues. Our trail, stretching out around the Dyke Road area, includes artists' homes, studios and a church. The trail creates a good morning or afternoon walk - or if you prefer to travel by car, there is easy parking near all venues.

www.dykeroadarts.com

Travel Information

Bus: the number 27 serves Dyke Rd every 15 minutes from central Brighton and Brighton Station. On fine days the 77 open top bus also follows this route along Dyke Rd. Ask for Church of the Good Shepherd. Buses 5 & 5A serve Preston Rd ask for Preston Park Station. Park & Ride on the 27 bus is available at Withdean Stadium.

Rail: Preston Park station on the London to Brighton line serves the trail.

Car: Parking is free in Maldon Road, Matlock Road and parts of Dyke Road at weekends, making it easy for you to enjoy a relaxed wander along the whole trail without having to move your car or pay for parking - please check individual road parking signs before you park.

1 Bonnita Apperley Art

4 Valley Close, Brighton BN1 5FB



(above)
Onwards from
Ditchling Beacon:
Bonnita Apperley

(left)
Wolstonbury Hill
bathed in light:
Bonnita Apperley

Come and see the wonder of the South Downs, captured in oil paint by **Bonnita Apperley**. Her landscapes capture the magic of these rolling hills, wide vistas, and meadow flowers. She meticulously builds layer upon layer of paint and detail, capturing the nuances of each shape, and shadow, to create detailed, evocative paintings of favourite views, and corners of our stunning countryside.

This is her first Open House, having swapped her love of the North Downs and sell-out exhibitions in Surrey, for the South Downs, where she grew up sketching and painting from an early age.

Her charming 1920's home, and studio is the perfect setting for her beautiful oil paintings, limited edition prints, cards, and etchings.

Take a moment to relax in her tranquil cottage garden, put your feet up, and enjoy a cuppa and a piece of cake.

Easy to find, the 27 bus stops at Valley Close, free parking.

07962 885354

bapperley@hotmail.co.uk

www.bonnitaapperleyart.com

10.00-17.00

M	T	W	T	F	S	S
		1	2	3	4	5
6	7	8	9	10	11	12
13	14	15	16	17	18	19
20	21	22	23	24	25	26
27	28	29	30	31		

HOUSE



2 Little Lane Studio

63 Bramble Rise, Brighton BN1 5GE



Through a rain soaked window, Martin Varennes-Cooke

Martin Varennes-Cooke *Painting*
Nicky Mackintosh *Mixed media*

Andrew Townsend *Painting*
John Lymer *Mixed media*

07791 104215

martincooke4@hotmail.com
martinvarennescooke.com

STUDIO-OR-WORKSHOP



M	T	W	T	F	S	S
		1	2	3	4	5
6	7	8	9	10	11	12
13	14	15	16	17	18	19
20	21	22	23	24	25	26
27	28	29	30	31		

3 Maroulla Simmonds

1 Ash Close, Hove BN3 6QS



THE RASIA, Maroulla Simmonds

Contemporary oil painting.
Recently exhibited at the ING
Discerning Eye Exhibition
London and The Cameron

Contemporary Art Gallery Hove.
Back for third year.
Easy street parking.

07415 518502

maroullasimmonds@hotmail.co.uk
www.maroullasimmonds.com

11.00-17.00

M	T	W	T	F	S	S
		1	2	3	4	5
6	7	8	9	10	11	12
13	14	15	16	17	18	19
20	21	22	23	24	25	26
27	28	29	30	31		

HOUSE



4 The Trojan House

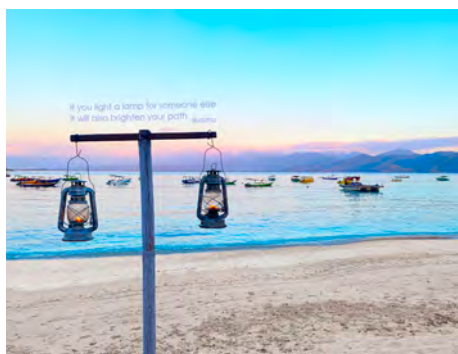
26 Maldon Road, Brighton BN1 5BE



Hand Crochet Sterling Silver Jewellery: Troy Ohlson



Copper Creatures and Jewel Flowers: Troy Ohlson



Light a Lamp, Indonesia Original Photograph: Wonderful Wisdom



Tequila Sunrise, Brighton Beach: Troy Ohlson

The House of Troy has been bringing you a magical mix for more than 20 years.

Enjoy a warm welcome and a complimentary glass of fruit punch or the legendary Pete's Pimms.

Discover delightful creations by Sussex artists and makers in a friendly relaxed home setting. Meet and chat with resident artist Troy in her working studios.

Troy Ohlson

Painting, collage, prints and cards

Copper Creatures

Hammered and twisted copper sculpture

Jewel Flowers

Everlasting flower sculptures

Wild Wonder Ceramics

Animal sculpture

Primordial Soup

Textile art dolls

J David Bennett

Colourful pop prints

Chapman's Aromatics

Essential oil delights

Glass Follies *Stained glass*

Driftwood Flights of Fancy

Inspired by walks on Sussex beaches

Wonderful Wisdom

Photography, travels and truths

Treasures by Troy

Hand crochet silver and gem jewellery

Sorry we're closed on

Saturday 11th May

We're open both Bank Holiday

Mondays

07885 911049
troyohlsonart@gmail.com
www.trojanhouse.com

HOUSE



							11.00-18.00	
M	T	W	T	F	S	S		
		1	2	3	4	5		
6	7	8	9	10	11	12		
13	14	15	16	17	18	19		
20	21	22	23	24	25	26		
27	28	29	30	31				

5 For the Man I Love

13 Maldon Road, Brighton BN1 5BD

For the Man I Love



A warm welcome to our Open House, previously voted in the top 10 and one of the friendliest you will find. Featuring a huge selection of affordable gifts and art for everyone. Complimentary elderflower gin on arrival.

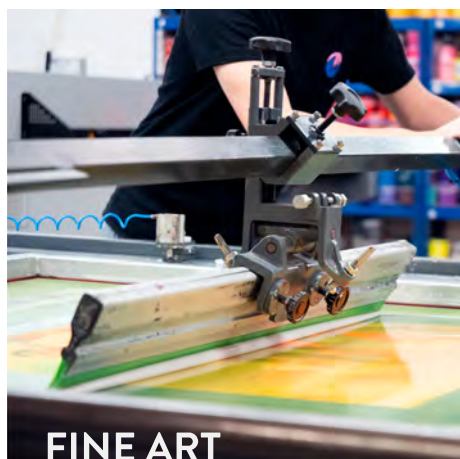
07796 656049

info@forthemanilove.com
www.instagram.com/forthemanilove

HOUSE

	M	T	W	T	F	S	S
			1	2	3	4	5
	6	7	8	9	10	11	12
	13	14	15	16	17	18	19
	20	21	22	23	24	25	26
	27	28	29	30	31		

- Chris Ceramics
- Chris Illustration
- Sue Textiles
- Marion Glass
- Lucy Candles
- Adam Textiles
- Katie Textiles
- Corrina Textiles
- Hannah Illustration
- Georgina Mixed media
- Roger Turned wood
- Jay Jams
- Sootmeigs Digital media
- Chocamoomoo Chocolates
- Mr Beaujangles Jewellery
- Liz Terrazzo



FINE ART PRINTMAKING

Digital | Silkscreen | Photography

www.harwoodking.com

01273 512554



6 Art@theGoodShepherd

Church of the Good Shepherd,
272 Dyke Road, Brighton BN1 5AE

January Morning, Shoreham; Katarzyna Aekbote



We Need All the Colours: Rainbow Trees; Allison Murphy



A joyous wonder of delights:

- Allison Murphy**
Oils and woodreliefs;
capturing dreams and walks
- Bianca Williams**
Handmade textiles;
inspired by the seasons
- Claire Houlihan**
Paintings;
local and nature inspired
- David Diplock**
Sketch books: inks and watercolours;
an artist's journey
- Diya Wen** Acrylic paintings
- Filipe Brown** Bas relief sculpture
- James Foley**
Contemporary hand-built ceramics
- Janet Roland**
Nature linoprints, inks and watercolours

- J.D. Liebe**
Unique local landscape paintings
- Joanne Sharpe**
Still life and landscapes
- John E. Creigan**
Digital media and photography
- Katarzyna Aekbote**
En plein air paintings
- Katja Dell**
Illustration; positivity for girls
- Melvyn Walmsley**
Landscape, seascapes and wildlife photography on canvas
- Phati Mnguni** Mixed media
- Priya Dhandapani**
Botanical paper sculptures
- Richard Howell** Ceramics
- Susana Brown**
Oils: ethnic portraits
- Suzi Lowe**
Abstraction: floral and landscapes
- Wendy Rowark** Still life, florals

01273 882987

rydonallison@icloud.com
www.instagram.com/art_at_the_good_shepherd

COMMUNITY



Sa 14.30-18.00, Su 12.30-18.00
BH Mo 11.00- 16.00

	M	T	W	T	F	S	S
			1	2	3	4	5
	6	7	8	9	10	11	12
	13	14	15	16	17	18	19
	20	21	22	23	24	25	26
	27	28	29	30	31		

7 Community, kindness and resilience – in aid of Sussex Nightstop

Cardinal Newman Catholic School BEACH (Business & Enterprise Hub), The Upper Drive, Hove BN3 6ND

A superb range of art spanning acrylic or oil on canvas to affordable prints of original art, sculpture, photography, jewellery and fashion accessories, from local artists, fine art students from Brighton MET and the Cardinal Newman Arts Ambassadors. With ample car parking, delicious cake, refreshments and boundless inspiration, this open house is not to be missed!

An online art auction runs alongside and all proceeds go towards Sussex Nightstop's work ensuring that young people experiencing homelessness in Brighton & Hove can sleep safe.

Sponsored by Archangels Architects



Untitled '2024': Alfie White



Sandfield Pond: Jo Watters-Pawlowski



The Man Who Sold the World: Tony Mills



The Donut: Ruth Mulvie

07788 318905
 mitchelle.dsouza@sussexnightstop.org.uk
 www.sussexnightstop.org.uk/aoh2024/

EDUCATIONAL-INSTITUTION



M	T	W	T	F	S	S
		1	2	3	4	5
6	7	8	9	10	11	12
13	14	15	16	17	18	19
20	21	22	23	24	25	26
27	28	29	30	31		

10.00-17.00

BRIGHTON MUSEUM
& ART GALLERY

AN
EXHIBITION
CELEBRATING
ABBA'S 1974
EUROVISION
WIN

ABBA: One Week in Brighton

28 Mar - 4 Aug 2024

ABBA in Brighton, 1974 © Photoshot/Topfoto



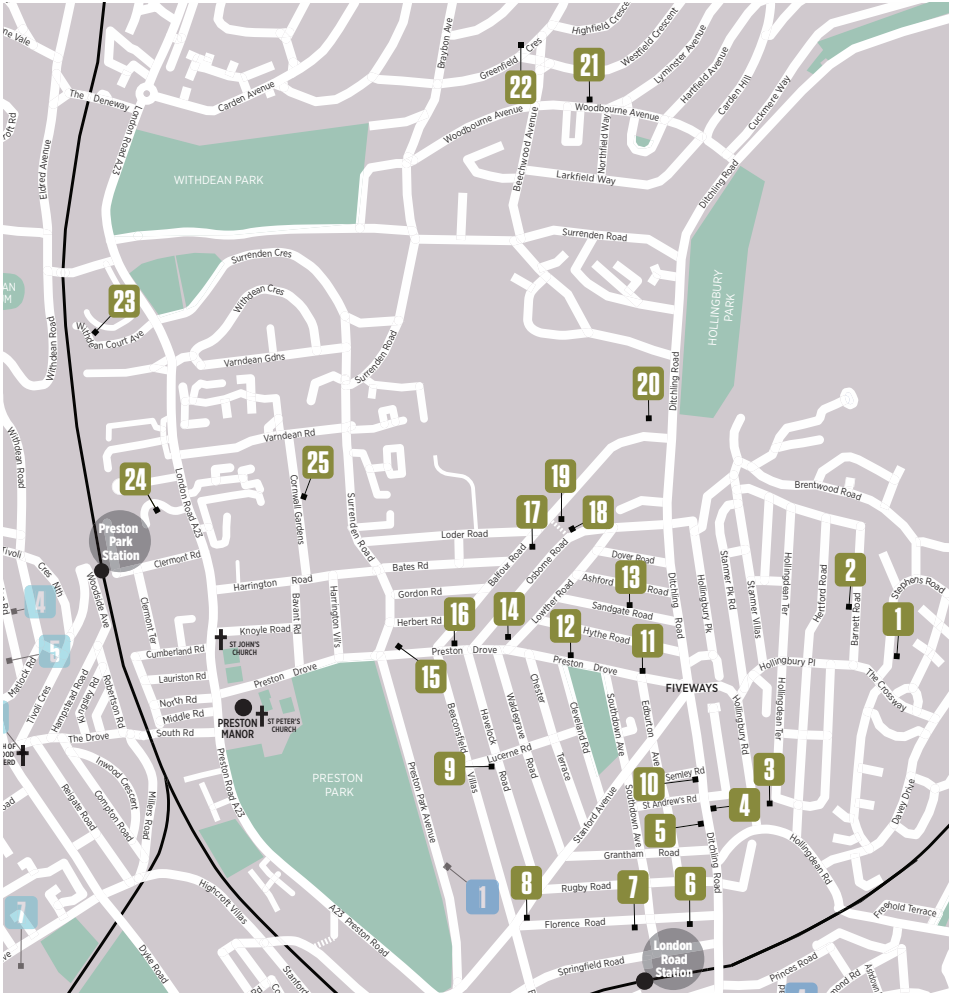
BRIGHTON
& HOVE
MUSEUMS



Supported using public funding by
ARTS COUNCIL
ENGLAND



brightonmuseums.org.uk



Where it all started! Open Houses began here in **Fiveways** with the first recorded artist's open house in 1981. Founder Ned Hoskins is represented in one of this year's venues (search them to find which one!). We proudly present a wonderful range of houses and businesses showing work of the highest quality. In addition to our regulars, new venues include Joel Sydenham (Chidi3s Art), Francesca Bray, Found Atelier, In Design Kitchens, Tower House, and the Hummingbird Clinic. We also welcome the return of St Augustine's Art Centre and the Hidden House. Varndeans School has its annual open day, showing students' amazing work (Saturday 18 May only). For refreshments, don't forget the excellent local pubs and cafés, several of whom have kindly sponsored us.

www.fivewaysartists.org

Sponsors

- Bowley & Gallagher
- Fiveways Fruits
- Happy Balance Massage and Therapy
- The Cleveland Arms
- David & Co Estate Agents
- Barfields Butchers
- Lost + Found Taproom
- Oasis Acupuncture
- Melissa's Café
- Surrenden Dental Practice
- Wigwam Toys
- Cubitt and West Central Brighton Estate Agents

- The Frame Factory
- Woodbourne Coffee House
- Open House
- Artflow
- The Makers Fair
- Fiveways Arts and Crafts
- Tilt
- Brighton Carpet Centre
- Brighton Early Music Festival
- Florence Road Market and Café

1 Joel Sydenham (Chidi3s Art)

14 Stephens Road, Brighton BN1 7ER



Shadow Work: Joel Chidi Sydenham

I am a self taught visual artist and poet, with a passion for people and human development. My art is influenced by my cultural experiences as well as a belief in an underlying unity between all things in existence. My original works of art are reproduced as limited edition prints and merchandise. I also host workshops encouraging creativity and bringing communities closer together. The intention with everything I practice is to uplift people and build social bridges.

07436 232228
joelsydenham@gmail.com
chidi3s.com

HOUSE

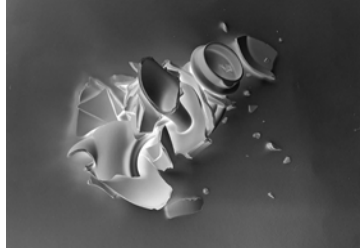


	M	T	W	T	F	S	S
			1	2	3	4	5
	6	7	8	9	10	11	12
	13	14	15	16	17	18	19
	20	21	22	23	24	25	26
	27	28	29	30	31		

11.00-17.00

2 The Red Door

37 Barnett Road, Hollingdean, Brighton BN1 7GJ



Re-assembled Karen Tilley

Shortlisted for Best Open House 2023, The Red Door returns with an eclectic and exciting mix of artists, showing unique works of high skill, detail and creativity. Workshops. Refreshments. Free Parking!

Karen Tilley *Combined media*
Helen Stuart *Sculpture*
Adam Crisp *Painting*

01273 507097
contact@karentilley.co.uk
www.instagram.com/the_red_door_brighton/

HOUSE



Susan Evans *Painting*
Julie Jennings *Print*
Jemma Day *Painting*
Marcus Laffan *Wood*
Gallit Shaltiel *Print*
Amy Frankie-Smith *Ceramics*
Alma Boyes *Ceramics*
Kirsty Thomas *Photography*
Phoebe *Jewellery*
Upholstery Man *Upholstery*

	M	T	W	T	F	S	S
			1	2	3	4	5
	6	7	8	9	10	11	12
	13	14	15	16	17	18	19
	20	21	22	23	24	25	26
	27	28	29	30	31		

11.00-17.00

3 Gallery 19a

19a Hollingdean Terrace, Brighton BN1 7HB



Jesus Green: Emily Jolley

Sam Kennedy *Collage*
Anna May *Textiles*
Lisa Dear *Basketry*
Rachel Entwistle *Pottery*
Heather Parr *Print making*
Emily Jolley *Painting*
Natasha Cawley *Ceramics*
Annie Slack *Spoon carving*
Sal Goodyer *Textiles*
Chalk & Flint *Ceramics*
Sue Hurman *Cloth and clay*
Cat Guerrier *Ceramic jewellery*
Richard Cain *Honey*

01273 900902
info@19a.org
www.19a.org

GALLERY



	M	T	W	T	F	S	S
			1	2	3	4	5
	6	7	8	9	10	11	12
	13	14	15	16	17	18	19
	20	21	22	23	24	25	26
	27	28	29	30	31		

11.00-17.00

4 Art at 202

202 Ditchling Road, Brighton BN1 6JE



Peregrine Falcon: Polly Raynes / Chris Brooks

Raw materials from recycled metal, glass, clay, porcelain, wood fabric and paper – all used and sometimes combined to explore and create. Wildlife and our environment is often our common inspiration creating beautiful artworks in both house and garden.

Tamar Rose *Ceramics*
Hannah Issi *Textiles*
SharkAlley *Jewellery*
Kate Rochester *Painting*
Jack Durling *Ceramics*
Charlie High *Jewellery*
Annie Mc Mullan *Glass*
Chris Brooks *Metalwork*
Polly Raynes *Painting*

01273 555007
polly.raynes.artist@icloud.com

HOUSE



	M	T	W	T	F	S	S
			1	2	3	4	5
	6	7	8	9	10	11	12
	13	14	15	16	17	18	19
	20	21	22	23	24	25	26
	27	28	29	30	31		

11.00-17.00

5 upfunt house

177 Ditchling Road, Brighton BN1 6JB



Written and illustrated by Patrick Kennedy

Bungo - A Dogs Life- Patrick Kennedy

We are happy to be opening again, with new artists and familiar faces offering limited edition high quality beautiful art and design, come and enjoy our house and garden.

Patrick Kennedy

Lino prints, cards and books

01273 551839

patrick@upfunt.com

www.upfunt.com

HOUSE



Lisa Hamilton *Jewellery*

Sam Stas *Multi media*

Helen Brown *Woodcut prints*

Cath Laffan *Art and jewellery*

Cath Bristow *Plant based print*

Helen Gould *Digital art*

Julie Ingham *Multimedia*

11.00-17.00						
M	T	W	T	F	S	S
		1	2	3	4	5
6	7	8	9	10	11	12
13	14	15	16	17	18	19
20	21	22	23	24	25	26
27	28	29	30	31		

7 Emily Boo and Friends @44

44 Florence Road, Brighton BN1 6DJ



G Plan 62 Chair: Emily Beaumont

Alongside our hugely talented array of local artists there will be tea and cake in the garden. Don't miss it!

Emily Beaumont, Room Thirteen *Furniture*

Yolande Beer, Caroline Chalton Hellyer, Kate McMinnies *Ceramics*

Natasha Caughey, Iris De La Torre, Katherine Lawrie, Rock and Petal *Jewellery*

Frances Bloomfield, Polly Finch *Mixed media*

Michael Geraghty, Jo Hathaway *Painting*

Lyn Holly Coorg *Photography*

Janet Brooke, Jane Sampson *Print making*

Stokey Textiles *Textiles*

07971 834872

em@myupholstery.co.uk

www.emilyboopholstery.co.uk

HOUSE



11.00-17.00						
M	T	W	T	F	S	S
		1	2	3	4	5
6	7	8	9	10	11	12
13	14	15	16	17	18	19
20	21	22	23	24	25	26
27	28	29	30	31		

6 Delicious Delights

60 Florence Road, Brighton BN1 6DJ

Another year of blisteringly talented artists, all under one roof, to delight the senses, alongside the usual array of delicious cakes and pies by The Veg Pie Collective! What more is there?!

Jon Stuart *Painting*

Andrew Howarth *Print maker*

Kate Lulham *Metalwork*

Andrea Eserin *Jewellery*

Fiona Richardson *Print making*

Gill Varle *Mixed media*

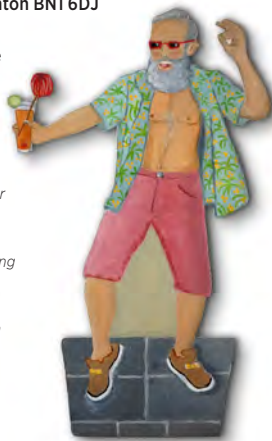
Sal Goodyer *Textiles*

Barbara Avery *Mixed media*

Jing Wang *Painting*

Gill Harvey *Ceramics*

Thea Wates *Jewellery*



Derek: Kate Lulham

07772 035752

katelulham@mac.com

www.katelulham.co.uk

HOUSE



11.00-17.00						
M	T	W	T	F	S	S
		1	2	3	4	5
6	7	8	9	10	11	12
13	14	15	16	17	18	19
20	21	22	23	24	25	26
27	28	29	30	31		

8 St. Augustine's Art Centre

St. Augustine's Arts & Events Centre, Stanford Ave, Brighton, BN1 6EA



St. Augustine's Art & Events Space (Main Hall)

Freeman *Spray paint, acrylic, ink*

Emily Fischer Field *Paint and mixed media*

Maggie Claringbould *Paint and mixed media*

Neil Childs *Sculpture*

Alex Picasso *Photography and print*

John Lymer *Mixed media*

Eli Phoenix *Mixed media*

Justin Berry *Oil and acrylic*

Jude Ann Williams *Charcoal*

Serena Sussex *Paint and mixed media*

Req *Spray paint*

And more...

Open 1 - 31 May

0800 0141434

arts@brightonstaugustinescentre.co.uk

brightonstaugustinescentre.co.uk/

GALLERY



09.00-18.00						
M	T	W	T	F	S	S
		1	2	3	4	5
6	7	8	9	10	11	12
13	14	15	16	17	18	19
20	21	22	23	24	25	26
27	28	29	30	31		

9 Starling Studio

107 Havelock Road, Brighton BN1 6GL



Older, Better Bob & Eve

Starling Studio is excited to open its doors again this May to showcase a wonderful selection of local artists and makers. Our studio will be filled with paintings, ceramics, jewellery, homeware and much more!

Kitty McCurdy *Paintings*
Martha Mitchell Design
Homeware

Lume Lighting *Lampshades*
Debbie Lawrence *Paintings*
Laura Danby *Homeware*
Kate Brigden *Ceramics*
Lulu McQueen *Jewellery*
Dan Howey *Wooden objects*
Bob and Eve *Wool art*
Kay Train *Ceramics*
Pinki Jones *Textiles*
And Mash *Prints*

info@brighton-starling.com
 brighton-starling.com
 www.instagram.com/starlingstudio_brighton

STUDIO-OR-WORKSHOP



							11.00-17.00	
M	T	W	T	F	S	S		
		1	2	3	4	5		
6	7	8	9	10	11	12		
13	14	15	16	17	18	19		
20	21	22	23	24	25	26		
27	28	29	30	31				

10 The Hummingbird Clinic

207 Ditchling Road, Brighton BN1 6JB



Wildlife and woodland stoneware series:
 Cadi Froehlich

The Hummingbird Clinic is delighted to open its doors to feature an eclectic mix of local talent and artistry. **Cadi Froehlich** (contestant in the 2024 Great Pottery Throw Down) will be exhibiting her stunning ceramic art pieces, alongside vibrant jewellery and wall art from **Laura Danby** and beautiful watercolours from **Bex King**. We are also excited to feature local artist and tutor **Paul Penketh**, who is displaying his striking abstract paintings alongside colourful ceramics from **Megan Khatkar**.

01273 504488
 emma@oasisacupuncture.co.uk
 www.thehummingbirdclinic.co.uk/artists2024

HOUSE



							11.00-16.30	
M	T	W	T	F	S	S		
		1	2	3	4	5		
6	7	8	9	10	11	12		
13	14	15	16	17	18	19		
20	21	22	23	24	25	26		
27	28	29	30	31				

11 Jane Palmer & Friends

239 Preston Drive, Brighton BN1 6FL



Hebe with Red Ribbon: Jane Palmer

Once again, we welcome you to a house and garden full of stunning fine art.

Jane Palmer *Painting*
Stef Hunter *Ceramics*
Tan Kingston *Painting*
Gabrielle Lord *Painting*
John Haywood *Watercolours*
Nigel Hunter *Sculpture*

07710 710766
 palmer.jane1963@gmail.com
 janepalmerbrighton.co.uk/open-house/

HOUSE



							11.00-17.00	
M	T	W	T	F	S	S		
		1	2	3	4	5		
6	7	8	9	10	11	12		
13	14	15	16	17	18	19		
20	21	22	23	24	25	26		
27	28	29	30	31				

12 One-Six-Nine

169 Preston Drive, Brighton BN1 6FN



Still Waters: Hiroko Lewis

For 2024, Hiroko is proud once again to present some of the finest and most experienced artists working in their respective fields for a varied and exciting collection of fine arts and crafts.

Hiroko Lewis *Painting*
Mark Wilson *Painting*
Richard Heys *Painting*

01273 508651
 art@onesixnine.co.uk
 www.onesixnine.co.uk

HOUSE



Sanni Falkenberg *Gemstones*
Tom Peterson *Ceramics*
Sam Beck *Mixed media*
Steve Bicknell *Sculpture*
Allison Murphy *Print making*
Marta Ptaszkiwicz *Painting*
Eve Claire Taylor *Enamelware*
Dona Diani *Jewellery*
David Storey *Painting*

							11.00-17.30	
M	T	W	T	F	S	S		
		1	2	3	4	5		
6	7	8	9	10	11	12		
13	14	15	16	17	18	19		
20	21	22	23	24	25	26		
27	28	29	30	31				

13 61 Sandgate Road

61 Sandgate Road, Brighton BN1 6JP



Thrown and modelled stoneware: Frances Doherty

Colourfully curated as always, we have gorgeous work throughout the house, into the garden studio. We look forward to seeing our lovely regulars and welcoming new visitors. We've a prize-draw to win a piece of work from one of our artists each weekend, workshops to sign up for from the artists, and a seconds sale in the garden studio.

Frances Doherty

Ceramics

Jane Denman

Painting

Makiko Konishi

Paper and books

Alison Baxter

Jewellery

Jo Kirby

Glass

+447854 541190

frances.doherty@gmail.com

www.instagram.com/theceramicgardener

11.00-17.00

M	T	W	T	F	S	S
6	7	8	9	10	11	12
13	14	15	16	17	18	19
20	21	22	23	24	25	26
27	28	29	30	31		

HOUSE



15 Found

91a Preston Drive, Brighton BN1 6LD



Previously a cafe, now an exhibition, workshop and cafe space curated by glass and textile artist **Fiona Edwards/Wicked Faerie Productions**.

Guest artists sharing the space include

Teresa Winchester

with relief prints,

Fway Lawn's upcycled

jewellery, joyful prints

by **Hattie Gordon**,

Serena Seaglass silver

jewellery, repurposed

vintage linens and

stained glass by

Wicked Faerie.

The outside suntrap

terrace will be open

for barista coffee,

drinks, cakes

and pastries.

07767 476556

Wickedfaerie1@yahoo.com

www.instagram.com/found.cafe

10.00-16.00

M	T	W	T	F	S	S
6	7	8	9	10	11	12
13	14	15	16	17	18	19
20	21	22	23	24	25	26
27	28	29	30	31		

COMMERCIAL-PREMISES



14 IN Design Kitchens

3 Lowther Road, Brighton BN1 6LF



We at IN Design Kitchens are delighted to be hosting our second open house, exhibiting the creativity and artwork of carefully selected artists within our beautiful kitchen art-space. Our kitchens and interiors celebrate individual style and lifestyle and we are passionate

about creating unique comprehensive designs for your space. We are proud to show the quality of IN Design products along with the artists' work, available to view and buy.

Catriona Muir *Printmaking*

Zankhana Patel *Ceramics*

07539 936054

iren.indesig@gmail.com

www.instagram.com/indesign.kitchens

11.00-17.00

M	T	W	T	F	S	S
6	7	8	9	10	11	12
13	14	15	16	17	18	19
20	21	22	23	24	25	26
27	28	29	30	31		

HOUSE



16 The Nature House

113 Preston Drive, Brighton BN1 6EW



Tell me your secrets: Ellie Hipkin

Welcome to The Nature House! Ellie Hipkin, textile artist, is opening her home along with eleven guest artists.

Come and see a wonderful selection of jewellery, outdoor sculpture, glass, textiles,

paper art, wood, leather bags, photography, and ceramics for the home and garden.

All the work is inspired by nature through organic form, natural landscape and materials.

07803 000901

ellie@elliehipkinart.com

elliehipkinart.com/artists-open-house

11.00-17.00

M	T	W	T	F	S	S
6	7	8	9	10	11	12
13	14	15	16	17	18	19
20	21	22	23	24	25	26
27	28	29	30	31		

HOUSE



17 Raspberry Surprise

118 Balfour Road, Brighton BN1 6ND



Dream and so create: Martin Brown

We are delighted to be opening this year and hope you will visit our light and welcoming house to enjoy the wide range of work on show.

Nicki Mayne

Painting

Flip Underdown

Glass

Theresa Stone

Textiles

Grahame Robson

Turned wood

Sue Penrose

Mosaic

Martin Brown

Painting

Gill Brown

Mixed media

Fran Brown

Glass

01273 540050

marbro13@gmail.com

martinbrown.artweb.com

HOUSE



		11.00-17.00				
M	T	W	T	F	S	S
		1	2	3	4	5
6	7	8	9	10	11	12
13	14	15	16	17	18	19
20	21	22	23	24	25	26
27	28	29	30	31		

18 Francesca Bray Artist

123 Osborne Road, Brighton BN1 6LW



Wildflowers at Shell Beach / Francesca Bray

Oil paintings, lino prints and naturally dyed embroidered textile pieces, all inspired by nature.

Sweeping Atlantic beach scenes and botanical artefacts to be treasured. Various sized works and prices.

fmc.bray@gmail.com

www.francescabrayartist.com

www.instagram.com/francescabrayartist/

HOUSE



		10.00-16.30				
M	T	W	T	F	S	S
		1	2	3	4	5
6	7	8	9	10	11	12
13	14	15	16	17	18	19
20	21	22	23	24	25	26
27	28	29	30	31		

19 The Hidden House

142 Balfour Road, Brighton BN1 6NE



Untitled: Sarah Ketelaars

We've assembled an eclectic group of talented artists working in a wide range of media:

Annie McMullan *Fused glass*

Sam Wilson *Metalwork*

David Price *Ceramic sculpture*

Holly M Atelier *Leather work*

Louise Kelly *Pottery*

Shammy Ruffell

Velvet cushions

Anna Tilson *Crockery mosaic*

Ompomom *Felted knitware*

Fleur Grenier *Pewterwork*

Benedict Gubb

Painting and prints

Julia Trigg

Typographic ephemera

collages

Deb Rae Smith *Lino printing*

Lucky Stitch *Textiles*

Angela Evans *Ceramics*

Sue Hurman

Textile and clay sculpture

Bob and Eve *Textile artwork*

Penny Warren

Anodised aluminium

and silver jewellery

Sarah Ketelaars

Cyanotype photography



Daisy: Angela Evans

07792 250887

katiebrett@yahoo.co.uk

www.instagram.com/the_hidden_house_at_142

HOUSE



		11.00-17.00				
M	T	W	T	F	S	S
		1	2	3	4	5
6	7	8	9	10	11	12
13	14	15	16	17	18	19
20	21	22	23	24	25	26
27	28	29	30	31		

20 Varndean School

Balfour Road, Brighton BN1 6NP



Ray, year 11

An exhibition of stunning GCSE ceramics based on the theme of *Natural Forms*, with fine art paintings, drawings, prints and sketchbooks and GCSE Design Technology work. Ceramics at Varndean is named an 'Area of Excellence' by education review charity Challenge Partners, and pieces were designed and produced on site in our purpose built ceramics studio.

We will also have a mini performing arts showcase from Dance, Drama and Music students as well as some tempting refreshments.

Open Saturday 18th May only.

01273 561281

marketing@varndean.co.uk
www.varndean.co.uk

EDUCATIONAL-INSTITUTION



	M	T	W	T	F	S	S
			1	2	3	4	5
	6	7	8	9	10	11	12
	13	14	15	16	17	18	19
	20	21	22	23	24	25	26
	27	28	29	30	31		

10.00-16.00

22 Greenfield Studio

47 Greenfield Crescent, Brighton BN1 8HL



Sunrise Over Plumpton Plain: Val Mager

Greenfield Studio is based in Patcham, looking out over the beautiful South Downs National Park. I am a painter and printmaker and will be exhibiting mainly my own work but also some of my daughters' work as well. I take my inspiration from the natural landscape, but also from any source that I feel a connection with and the inherent technical challenges posed in recreating such sources. Printmaking offers a wide variety of techniques to meet these challenges.

07714 212041

valmager@aol.co.uk
www.valmagerart.co.uk/

STUDIO-OR-WORKSHOP



	M	T	W	T	F	S	S
			1	2	3	4	5
	6	7	8	9	10	11	12
	13	14	15	16	17	18	19
	20	21	22	23	24	25	26
	27	28	29	30	31		

10.00-17.00

21 Studio 87

87 Woodbourne Avenue, Brighton BN1 8EJ



Iris in Splendor: Carolyn Nicholls

Studio 87 Open House and garden, with our much loved pop-up cafe and a variety of art to delight you. You will find landscapes in both oil and acrylic on canvas, watercolours, mixed media and ceramics. Our guest artists bring their own special flavour.

Do come and see us, you will be very welcome.

Beth Chaplin Jewellery
Alex Smith Metalwork
Tessa Wolfe Murray Ceramics
Linda Church Painting
Carolyn Nicholls Mixed media

07429 549670

carolyn.nicholls@me.com
www.carolynnichollsartist.co.uk

HOUSE



	M	T	W	T	F	S	S
			1	2	3	4	5
	6	7	8	9	10	11	12
	13	14	15	16	17	18	19
	20	21	22	23	24	25	26
	27	28	29	30	31		

11.00-17.00

julia trigg

My typographic ephemera prints discounted during May at
The Hidden House, 142 Balfour Road, Brighton BN1 6NE
Buy online at www.juliatrigg.co.uk Instagram @juliatrigg

23 Hygge

20 Withdean Court Avenue, Brighton BN1 6YF



The Blush Collection: Throw to Fire

Welcome to Hygge – long-listed for Best Open House in 2023. Take time to explore the talented artists exhibiting in our house, learn to throw in our taster pottery lessons and enjoy homemade refreshments in our garden. Wheel throwing taster sessions can be booked through our website.

- Throw to Fire** *Ceramics*
- Liv Cornell** *Furniture*
- Aeyglom** *Ceramics*
- Dan Howey** *Furniture*
- Fair Jewellery** *Jewellery*
- Kalsang Shoba** *Print making*
- Shiv Textiles** *Textiles*
- WillMake(s)Things** *Furniture*

07943 523604
 info@throwtofire.co.uk
 www.instagram.com/hygge_aoh/

HOUSE



		10.30-17.00				
M	T	W	T	F	S	S
		1	2	3	4	5
6	7	8	9	10	11	12
13	14	15	16	17	18	19
20	21	22	23	24	25	26
27	28	29	30	31		

25 Stuart and Mark and Friends

23 Cornwall Gardens, Brighton BN1 6RH



Hollingbury Sunset Feb 24: Mark Findlay

We're back with more artists than ever! 17 are showing in our large house and garden, with several new to us, as well as old friends.

- Janice Farrar** *Glass*
- Glenice Hoffman** *Ceramics*
- Ned Hoskins** *Painting*
- Keith Pettit** *Sculpture*
- Claudia Rivers-Bland** *Print making*
- Caroline Chalton Hellyer** *Ceramics*

- Stuart J Bullen** *Print making*
- Mark Findlay** *Photography*
- Kitty Cava** *Print making*
- Jude Clynick** *Print making*
- Hilary Stirling** *Ceramics*
- Juliet Walters** *Ceramics*
- Eva Wibberley** *Painting*
- Cat Guerrier** *Jewellery*
- David Williams** *Painting*
- Pauline Crook** *Textiles*
- Jakob Frerichs** *Sculpture*
- Saya McNairn-Yanagi** *Ceramics*

24 Tower House Community Centre

Towergate, London Road, Brighton BN1 6WT



'Seed heads' in watercolour and ink: Lindsey Pearson

Tower House offers a warm welcome to visitors. Our artists and makers showing include:

- Sarah Maddox** *Greetings card designer*
- Yvonne Rivers** *'Wild Rivers' – community willow worker*
- Miranda Mather** *Beautifully designed bags*
- Paul Stapleton** *'BN1' the Brighton board game*

Lindsey Pearson *Vibrant, expressive watercolours, prints and cards*

- Vivi Siegert** *Mixed media*
- Sophia Withers** *Textiles and glass beads*
- Annette Lawrence** *Jewellery*
- Starling Arts** *Mixed media*

Cafe, toilets, parking

01273 549604
 towerhouse@svp.org.uk
 www.svp.org.uk

HOUSE



		11.00-17.00				
M	T	W	T	F	S	S
		1	2	3	4	5
6	7	8	9	10	11	12
13	14	15	16	17	18	19
20	21	22	23	24	25	26
27	28	29	30	31		



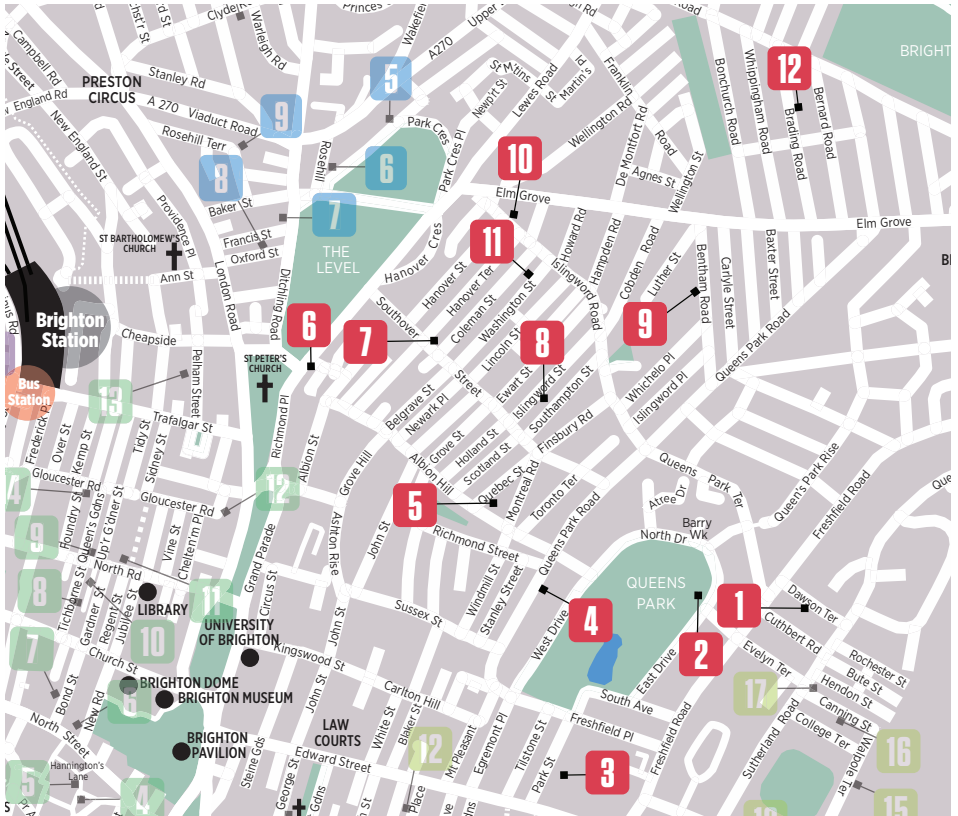
Untitled: Stuart Bullen

07941 257288
 mark.h.b.findlay@gmail.com
 www.facebook.com/StuanBullenMarkFindlay/

HOUSE



		11.00-18.00				
M	T	W	T	F	S	S
		1	2	3	4	5
6	7	8	9	10	11	12
13	14	15	16	17	18	19
20	21	22	23	24	25	26
27	28	29	30	31		



Get ready for an enchanting wander through the streets of **Hanover**, where every corner bursts with vibrant hues and creative energy. Picture-perfect rainbow houses, cosy cafes and charming pubs will fuel you on the way. We are rolling out the red carpet for fresh faces and seasoned pros alike this year. Previous festivals have seen our artists win Best Open House awards, with four long-listed venues in 2023 alone - combined with our popular Kids Art Trail we are a destination not to be missed! Our kaleidoscope of designers, artists and makers, showcasing work ranging from photography to sculpture, painting to textiles, open their homes and studios to you this May. Grab your pals, soak up the artsy vibes and make it a day to remember!

www.instagram.com/hanoverarttrail

Travel Information

- Walk:** The Hanover Trail is easy to follow on foot, we have an elevated view of the city with the best views!
- Bus:** The 23 and 18 run along Queens Park Road. 7, 2, 1, will put you minutes from Queens Park. The 37B comes up via Southover Street from the Level. Many buses can be taken towards the Hanover area from Brighton station. 21 and 22 travel up Elm Grove from The Level
- Train:** We are just a 15-minute walk from Brighton Station.
- Car:** Pay and display.

Sponsors

- Starfish & Coffee**
www.starfishandcoffee.cafe
- Grove Gardens**
www.grovegardens.co.uk
- The Independent**
<https://theindependent.pub/>
- Beach Box**
<https://beachboxspa.co.uk/>
- Hanover Homes**
<https://www.hanoverhomes.net/>
- ARKA Original Funerals**
www.arkafunerals.co.uk
- Hilly Laine**
www.hillylaine.co.uk
- Luna Moon Mosaic Classes**
www.carolinebuddden.co.uk
- Q Estate Agents**
www.qsalesandlettings.co.uk
- Connected Brighton**
www.connectedbrighton.com

1 Faye Bridgwater

10 Dawson Terrace, Brighton BN2 0EL

Step Inside My Joyous Exhibition! Hello, Welcome back to my home and garden studio. Please come and explore! Every wall is adorned with expressive and joyous paintings. It's been an eventful journey since last May - from participating in Martlets' Shaun the Sheep sculpture trail (raising a huge £25k for the charity) to exhibiting at Celebrating Cuckmere as well as being invited to Glyndebourne's Fair Ground exhibition. I have even had the pleasure of collaborating with St Ives School of Painting for a course and released a new collection of prints with **King & McGaw**. In the studio I've been experimenting with some mesmerising monochrome paintings too! I'll be joined by **Otti** AKA lovely **Rosie Shorter** with her hand punched work.

What to expect:

- Explore my slightly messy garden studio.
- Immerse yourself in a new collection of original contemporary paintings, featuring vibrant landscapes and bold florals.
- I'll be here to advise and have a good chat too :)

Be the first to preview the collection by signing up for my mailing list (see my website)

What will be on offer:

- Original paintings and drawings
- Hand-finished limited edition prints
- Uplifting greetings cards
- Exciting new product: Sketch Squares - a must-have for every artist
- Hand-punched work by Otti, including cushions and rugs

Opening Hours:

Visit me from 10 am to 5 pm on the first two weekends of May.

For private appointments, during the week or later in the year, please email me, I'd love you to visit.

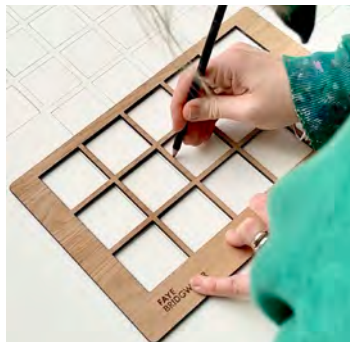
I can't wait to meet you. See you soon! Love Faye xx

Faye Bridgwater *Painting*
Otti *Textiles*

First two weekends.
Open in the week too by appointment, please mail
faye@fayebridgwater.com



Faye Bridgwater: Simon Dack



Above left: Collections of Faye Bridgwater's greetings cards: Faye Bridgwater

Above: Sketch Squares tool for artists: Faye Bridgwater

Left: The Greatest Gift: Faye Bridgwater

07811 967257
faye@fayebridgwater.com
www.fayebridgwater.com

HOUSE



												10.00-17.00
M	T	W	T	F	S	S						
			1	2	3	4	5					
6	7	8	9	10	11	12						
13	14	15	16	17	18	19						
20	21	22	23	24	25	26						
27	28	29	30	31								

2 The Clubhouse

Queens Park Tennis Clubhouse, East Drive, Brighton BN2 3BG



Queens Park Tennis Clubhouse: Conrad Brunner

The Clubhouse opens its doors for a second year with an amazing selection of local artists working with different media. The licensed cafe will be open for refreshments.

Andy Townsend *Painting*
Izzie Artisan *Jewellery*
Lotta Cole-Hatvany *Ceramics*

07747 117350
 bego@qptc.co.uk
 www.qptc.co.uk

COMMUNITY

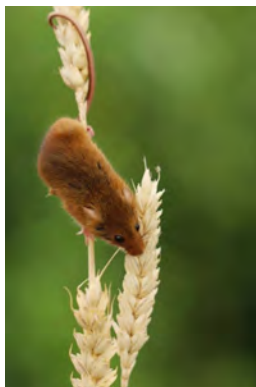


Harvey Woodward *Painting*
Adam Crisp *Painting*
Ali Caddick *Painting*
Mr Phil *Illustration*
Philip Melling *Sculpture*
Anvil & Wick
Sculptural candle holders
Sarah Callender *Screen print*

							11.00-17.00	
M	T	W	T	F	S	S		
6	7	8	9	10	4	5		
13	14	15	16	17	11	12		
20	21	22	23	24	18	19		
27	28	29	30	31	25	26		

3 Drawing Together

Sloane Court, Park Street, Brighton BN2 0DG



Harvest Mouse: Nikki Proud

Drawing Together is a celebration of the work by members and friends of Drawing Together – a community art group based at Sloane Court, Senior Housing. The scheme promotes independent living and community engagement. Drawing Together is run by residents and provides a creative fun space to explore art. Included in the exhibition are the work of:

Residents:
Janet Pavone
Oils, acrylics and pastels
Nikki Proud *Photography*
 Friends:
Mary L H Wood
Watercolour
Jeff Borrer
Photography

07982244982
 janetpavone@gmail.com
 janetpavone.com

COMMUNITY



							11.00-17.00	
M	T	W	T	F	S	S		
6	7	8	9	10	4	5		
13	14	15	16	17	11	12		
20	21	22	23	24	18	19		
27	28	29	30	31	25	26		

4 Floppy Toast at The Pink House

78 Queens Park Road, Brighton BN2 0GL



FADE (into you) Floppy Toast

Step inside the world of Floppy Toast at The Pink House, where fine art meets attitude, from stunning abstracts to very cheeky slogan prints. Whether you're drawn to emotive

info@floppytoast.com
 www.floppytoast.com
 www.instagram.com/floppy_toast/

HOUSE



compositions or looking to push some boundaries, Floppy Toast will be showcasing brand new work throughout. Come and see what's landed on our illustrious gallery wall this year!

							11.00-17.00	
M	T	W	T	F	S	S		
6	7	8	9	10	4	5		
13	14	15	16	17	11	12		
20	21	22	23	24	25	26		
27	28	29	30	31				

5 Quebec Workshops

R/O 31 Quebec Street, Brighton BN2 9UZ



Quebec Workshops Montage: Debbie Lawrence/Zilla/Luna Moon

Quebec Workshops are a collection of fascinating workspaces belonging to some of Brighton's brightest talent! Hidden in the heart of Hanover you will find:

Debbie Lawrence Artist's studio, paintings and prints for exhibition and for sale
 lunamoonshop@gmail.com
 www.facebook.com/lunamoonandfriends
 www.ilovezilla.com

STUDIO-OR-WORKSHOP



Zilla Design studio selling hand appliqué, multi textured sweatshirts of dreams
Luna Moon Mosaic workshop and teaching space with handcrafted mosaics for sale and mosaic demonstrations. Also, surprise guest artists' stalls and tearoom in the courtyard!

							11.00-17.00	
M	T	W	T	F	S	S		
6	7	8	9	10	4	5		
13	14	15	16	17	11	12		
20	21	22	23	24	25	26		
27	28	29	30	31				

6 Phoenix Art Space Open Studio

10-14 Waterloo Place, Brighton BN2 9NB



OPEN STUDIOS
2024 SAT 11 - SUN 12 MAY

PHOENIX
ART SPACE



phoenixbrighton.org

Image: Created by Sean O'Brien



Phoebie Wingrove Photography



Phoebie Wingrove Photography



Phoebie Wingrove Photography

Explore the studios of the artists, designers and creative businesses who work inside Phoenix Art Space. The building is currently home to 120 professional artists at all stages of their careers including painters, photographers, filmmakers and designers. Learn about their practices, processes and ideas and gain insight into the surroundings that serve to support and inspire them.

Families with children are invited to participate in an artistic treasure trail, that takes you around the studios for clues. Visitors also have the opportunity to browse and buy original artworks and items direct from makers. Visit Canvas Coffee Co. for tasty food and refreshments.

Exhibitions in the Main Gallery, Window Gallery and Project Space on the ground floor will be open all weekend.

Everyone welcome, free entry

Please note that only the ground floor of Phoenix Art Space is currently wheelchair accessible and all studios floors must be accessed via stairs. If you have any suggestions on how we can make your visit easier, please get in touch.

One weekend only.

01273 603700
info@phoenixbrighton.org
phoenixbrighton.org

STUDIO-OR-WORKSHOP

Fr 10 May 18.00-20.30
Sa-Su 11 & 12 May 11.00-17.00

M	T	W	T	F	S	S
		1	2	3	4	5
6	7	8	9	10	11	12
13	14	15	16	17	18	19
20	21	22	23	24	25	26
27	28	29	30	31		

7 The Bear House

11 Southover Street (Door on Hanover Terrace), Brighton BN2 9UA



Mating Seabirds - Bronze and Stone: Claude A Lester

Claude A Lester
Photographer and mixed media sculptor

My pieces are inspired by the forms in nature from canyons to caterpillars, predators to prey. I often start by taking photographs of wildlife in their

natural environment. Sometimes I am happy to recreate the animal in their realistic form but other times I use what I have captured as the source of my ideas - whether that is an abstracted form of reality or my emotional response.

07957 469001
thebearhouse@myyahoo.com
www.thebear-house.co.uk

HOUSE



M	T	W	T	F	S	S
		1	2	3	4	5
6	7	8	9	10	11	12
13	14	15	16	17	18	19
20	21	22	23	24	25	26
27	28	29	30	31		

10.00-18.00

8 Victoria Homewood and friends

71 Islingword Street, Brighton BN2 9US



Nisya Haniff's window - Selangor Malaysia: Victoria Homewood

Venture to the heart of Hanover to visit **Victoria Homewood** in her colourful home studio. She will be exhibiting recent works focused on windows from around the world alongside her contemporary plein air oil studies of the Sussex countryside.

She will be joined by friends **Rose Emma Ceramics**, **Rebecca Tann Handmade furniture and linoprints** and **Jenny Howell** *Amazing artisan cakes*.

Bryony Devitt's travelling miniature open house also joins on the 5th and 19th.

07778574098
victoriahomewood@hotmail.co.uk
www.victoriahomewood.co.uk

HOUSE

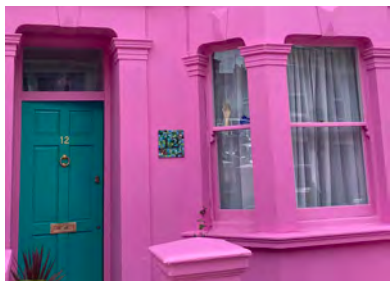


M	T	W	T	F	S	S
		1	2	3	4	5
6	7	8	9	10	11	12
13	14	15	16	17	18	19
20	21	22	23	24	25	26
27	28	29	30	31		

11.00-17.00

9 The Other Pink House

12 Bentham Road, Brighton BN2 9XD



The Other Pink House

Welcome to my first Open House. In addition to exhibiting my remade vintage jewellery, I am joined by six Brighton-based talented women artists to create an eclectic and vibrant emporium of paintings, prints, jewellery, textiles, and felted creatures.

Crystal Elliker
Sustainable textiles
Davina Wilson *Paintings*
Deanna O'Keeffe
Remade vintage jewellery
Ginny Pickles *Prints*
Jane Davey *Felted creatures*
Laura Stanley *Oil paintings*
Michelle Hockey *Prints*

Instagram @The_Other_Pink_House

HOUSE



M	T	W	T	F	S	S
		1	2	3	4	5
6	7	8	9	10	11	12
13	14	15	16	17	18	19
20	21	22	23	24	25	26
27	28	29	30	31		

11.00-17.00

10 The ARKA House

6 Islingword Road, Brighton BN2 9SE



La Reina Lexi Laine

An eclectic, delightful mix of local talent including an underwater photographic artist, a stone carver, textile designers, paintings and photography - something for everyone in this wonderful unexpected venue.

Lexi Laine
Hannah Thompson
Tracy Steel
Ginny Baxter
Chris Judge
Sue Tyhurst
Rehana Rose

07973 541598
mail@rehana.co.uk
lexilaine.co.uk

COMMERCIAL-PREMISES



M	T	W	T	F	S	S
		1	2	3	4	5
6	7	8	9	10	11	12
13	14	15	16	17	18	19
20	21	22	23	24	25	26
27	28	29	30	31		

10.00-17.00

11 Yvonne Coomber

57 Washington Street, Brighton BN2 9SR



Top: Summer Kisses: Yvonne Coomber

Above: A Long Way From Home: Mike Boyer

Left: Yvonne Coomber

07779 058735
 info@yvonnecoomber.com
 www.yvonnecoomber.com

HOUSE

Yvonne Coomber *Painting*

Internationally acclaimed artist Yvonne Coomber creates a joyful, rainbow drenched dance around the canvas.

Her pieces are held in collections nationally and worldwide. She is a renowned ambassador for the protection of wildflowers and has collaborated with many charities and organisations including The Eden Project, the BBC and The National Trust.

Speaking of her paintings she says, "I am both a romantic and a believer. I work intuitively, creating a space in which I allow the image to evolve and unravel. My practice demands that I am openhearted and it always involves risk. It is an eternal search for truth. I feel things with a burning intensity and my canvas provides a container for these huge emotions. My work sings of tumbling hedgerows, tangled meadows and open moorlands. It is my intention is to transport the viewer to a place that is literally saturated in joy. Where dreams are born.

Highest quality oil paints are applied in a multitude of layers. The alchemy of techniques result in a prismatic jewel-like composition of rich pigments that reveal the radiance of nature, I always paint in nature and the elements, in a very direct way, dictate how and where the paint falls. Lacy ice and strong winds have as much influence on the final painting as golden sunshine and gentle breezes.

I pour my heart and soul into each image and the canvases sparkle with love. Ultimately my practice is a prayer and a surrender. A place where the mystery unfolds. My paintings are a celebration of all that is good in the world."

A must see!

Mike Boyer *Painting*

" Like a poem on a postcard in an old suitcase found in a junk shop next to the bridge in a village where the rivers meet."

10.30-17.30

M	T	W	T	F	S	S
		1	2	3	4	5
6	7	8	9	10	11	12
13	14	15	16	17	18	19
20	21	22	23	24	25	26
27	28	29	30	31		

12 Becky Blair & Friends

66 Brading Road, Brighton BN2 3PD



House of Juro - Pottery Collaboration:
Becky Blair & Rachel Entwistle



PinkEnvelope: Becky Blair

We Are Back! Opening for one weekend only!

We can't wait to welcome you into our home and share with you this stunning collection of work made by highly skilled artists of Sussex.

Come and visit us:
Friday 3rd May 3-7pm.
Saturday 4th to Monday 6th May
11am -5pm.

Amy Douglas

Small sculptural interventions

Annie Found A Spoon

Carved spoons

Becky Blair *Paintings and prints*

Cahoots *Turned wood*

Claire Knill *Suspended sculpture*

Deborah Manson

Textile hangings and quilts

Emma Eardley

Cakes and savouries

Guy Stevens

Stone and ceramic sculpture

Hopesprings Chairs

Bespoke seating

Kathie Murphy *Resin vessels*

Rachel Entwistle *Pottery*

House Of Juro

Hand painted terracotta pots

07729 034158

becky@beckyblairartist.co.uk

www.instagram.com/beckyblairartist

11.00-17.00

M	T	W	T	F	S	S
6	7	8	9	10	4	5
13	14	15	16	17	18	19
20	21	22	23	24	25	26
27	28	29	30	31		

HOUSE



Fully Bespoke Fine Art Printing Service



- ★ Professional scanning and proofing
- ★ Customised to your requirements
- ★ High quality - small print runs
- ★ Stretched canvases and mounted prints
- ★ Call for a chat - 10% off your first order (quote:AOH10)

w: www.studio74.uk e: studio@studio74.uk t: 07855 987242



first & last

www.firstandlast.shop

Local artists, ceramics, homeware, fragrance, skincare, jewellery, cards, books & accessories.

1, The Broadway, Brighton Rd,
Worthing BN11 3EG



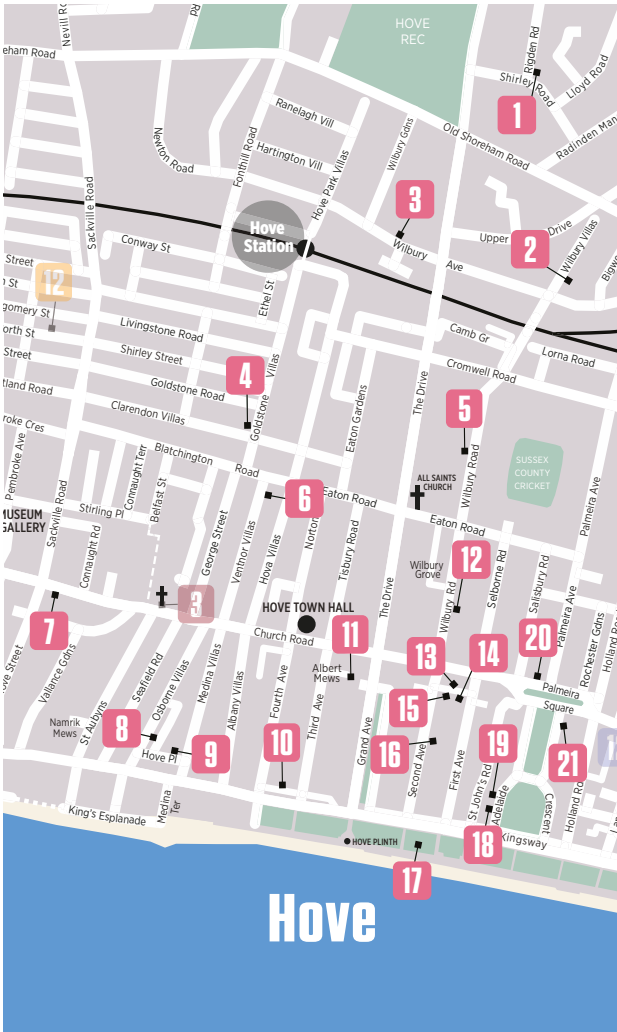
Hannah Forward

Exhibition of new paintings and prints

Sat 8th June – Sun 23rd June

Showing at First & Last as part of
Worthing Arts Festival.

hello@firstandlast.shop @firstandlast_shop
Open Wed - Sat 11-5pm, Sun 11-4pm



Hove is where the art is! All our award-winning artists and makers simply can't wait to welcome you into our homes, galleries and workshops, where we've once again put together a truly inspiring selection of creative work. Previous festivals have seen us win Best Open House, plus several runners-up, with our carefully curated shows to delight art lovers of all ages. This year we've got some exciting new houses, including a mobile gallery on the seafront! At every house look out for our fun Hove Trotters Children's Quiz, sponsored by our friends at The Book Nook, featuring a drawing competition with lots of prizes on offer! Most venues are open every weekend, including Bank Holidays, from 11-6pm, but please check venues for details.

www.hovearts.com

Travel information

Walk: From Brighton, take the promenade or Western Road heading west. From Portslade/West Hove, take New Church Road or the promenade heading east.

Cycle: There are cycle lanes along the seafront from Brighton, Portslade, Grand Avenue and The Drive. The nearest Beryl electric bike docks are located on the seafront by King Alfred and opposite Brunswick Sq, in Sackville Rd and throughout the city.

Bus: Hove Station 7, 8; Hove Town Hall, Church Road 1, 1A, 2, 2A, 6, 5, 5A, 5B, 25, 46, 49, 81, 81B, Hove Cricket Ground 81B; Old Shoreham Road/Hove Park 56

Train: Regular services to Hove Station from Brighton, London and the South West.

Car: There are PayByPhone parking bays throughout Hove and the Norton Road and Hove Street car parks (with EV charging).

Sponsors

A really BIG thank you to our lovely local sponsors:

Bespoke You
bespokeyou.co.uk/hove

Cameron Contemporary Art
cameroncontemporary.com

Coole Bevis LLP
coolebevislaw.com/solicitors/hove

Dean Wilson LLP
deanwilson.co.uk

Kingfisher Electrics
kingfisherselectrics.co.uk

Space Doctors
space-doctors.com

The Book Nook
booknookuk.com

The Claremont
theclaremont.eu

1 5 at No. 1 Rigden Road Pop-up

1 Rigden Road, Hove BN3 6NP



Survived: Kate Scott - photo credit: Kate Scott

Kate Scott opens her home, garden, and studio for **one long weekend** this year with a group of artists she loves, with sculpture, painting, jewellery, and collaborations, plus refreshments.

Kate Scott *Painter*

Emma Stanton *Responsibly sourced handmade jewellery*

07719 337676

info@katescottpaintings.com
www.instagram.com/five_at_no1_rigden_road

HOUSE



Jane Sarre

Sculptor and curator

Amanda Sumpter

Sculptor and painter

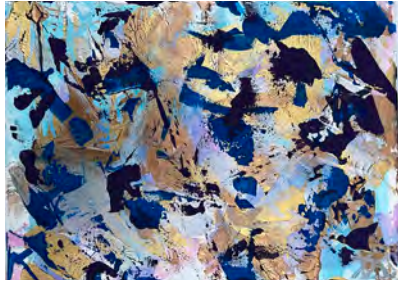
1 Rigden Road is opening for **one long weekend only**, as part of the Hove Arts trail.

Free parking at weekends.

							11.00-18.00	
M	T	W	T	F	S	S		
6	7	8	9	10	11	12		
13	14	15	16	17	18	19		
20	21	22	23	24	25	26		
27	28	29	30	31				

2 Abstractwill

9 Wilbury Villas, Hove BN3 6GB



Contentment: William Thomas

William is delighted to open his garden art studio and home again. He welcomes you to view his wide variety of vibrant and exciting abstract painting, using various tools to explore different textures and overcome challenges.

Artists:

Kathryn McCulloch *Jewellery*

Helen Benton *Print making*

Balavendra Elias *Wood carving*

William Thomas *Painting*

Lisa Smith-Wallace *Bespoke cakes, chutneys and preserves*

Wheelchair accessible and refreshments provided.

07788 924940

gekitch@tiscali.co.uk
www.instagram.com/abstractwill

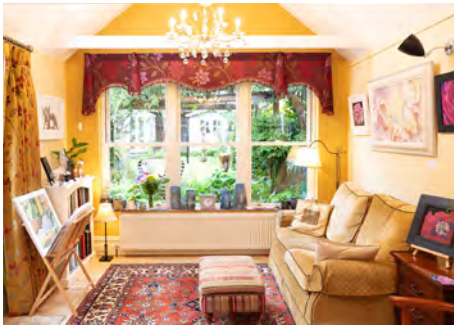
HOUSE



							11.00-17.30	
M	T	W	T	F	S	S		
6	7	8	9	10	11	12		
13	14	15	16	17	18	19		
20	21	22	23	24	25	26		
27	28	29	30	31				

3 Art in Bloom

27 Wilbury Avenue, Hove BN3 6HS



Art in Bloom Open House 2023. Photograph: Svi O'Jalia

A warm welcome awaits you when you visit our Victorian home in Hove. We will be displaying an exciting range of art and sculpture throughout the ground floor rooms and out into the walled garden where you can also enjoy cakes by Jenny. This year's selection of creatives includes many familiar favourites as well as some specially selected new artists.

Judith Berrill *Painting*

Zoe Clare *Ceramic sculpture*

Amy Fathers *Paper sculpture*

Karen Hollis *Floral painting*

Jenny Hollis *Cakes and bakes*

Alison Ingram

Abstract wildlife painting

Chris Kampf *Garden sculpture*

Steve Knight

Sculptural wooden bowls

Jill Tattersall

Mixed media and handmade paper

Tessa Wolfe Murray *Ceramics*



Tangerine Dream: Karen Hollis

07932 062615

karen@artinbloom.co.uk
www.artinbloom.co.uk

HOUSE



							11.00-18.00	
M	T	W	T	F	S	S		
6	7	8	9	10	11	12		
13	14	15	16	17	18	19		
20	21	22	23	24	25	26		
27	28	29	30	31				

4 Dion Salvador Lloyd

18 Goldstone Villas, Hove BN3 3RQ



Open House 2023; Dion Salvador Lloyd



Birdsong Echoes 130cm x 150cm x 4cm oil on canvas; Dion Salvador Lloyd



Lovers Hill 42cm x 48cm oil on Fabriano paper; Dion Salvador Lloyd



Ebb Tide 105cm x 130cm x 4cm oil on canvas; Dion Salvador Lloyd

Brighton born established artist **Dion Salvador Lloyd** warmly welcomes you to his sunny Victorian home for his 24th consecutive year of Open House. Exhibiting a new collection of contemporary sea and landscape oil paintings and works on paper alongside new botanical works inspired from in and around the South Downs and the Sussex coastlines.

New framed limited edition signed prints available to view

Dion Salvador Lloyd is represented by galleries in London and the UK and his works are held in private and corporate collections.

Winner Best Open House Award 2015

Commissions undertaken

Open by appointment at other times and days

Comments from previous Open House visitor's book:

'Totally blown away by your wonderful paintings, loved every one'

'What a lovely visit we had'

'My favourite open house always'

'Absolutely stunning work, beautiful tones, depth and texture'

'I loved your energy. I am grateful for the insight into your mind, thanks for sharing'

'Very inspiring work thank you'

'Yet again a joy to view and speak to lovely people'

'A special find'

'Beautiful ethereal work, my favourite open house'

'Wow....breathtaking! My head spinning of overwhelming peace in the room'

'I went to see the Hockney Lightbox exhibition and was disappointed but have honestly enjoyed your exhibition 100% more'

07718 450745
info@dionsalvador.co.uk
www.dionsalvadorlloyd.com



							10.00-18.00	
M	T	W	T	F	S	S		
		1	2	3	4	5		
6	7	8	9	10	11	12		
13	14	15	16	17	18	19		
20	21	22	23	24	25	26		
27	28	29	30	31				

5 51 Wilbury Road

51 Wilbury Road, Hove BN3 3PB



Ceramic head: Alain Guy

Group show of stunning new work by:

Alain Guy
Ceramic sculpture
heads and paintings

John Beetham
Large scale
architectural drawings
and paintings

Campoli and Nelson
Unique designer
jewellery and
glassware

Douglas Frost
Linocut printmaker

Zac Toff
Up in Frames -
Frames of tiny joy

01273 722754
johnpbeetham@aol.com
www.alainguy.co.uk

HOUSE



	M	T	W	T	F	S	S
			1	2	3	4	5
6	7	8	9	10	11	12	
13	14	15	16	17	18	19	
20	21	22	23	24	25	26	
27	28	29	30	31			

11.00-17.00

6 Carla Armour

Flat 3, 30 Ventnor Villas, Hove BN3 3DA



Out of the grid, into reality. Acrylic & hessian on canvas: Carla Armour

To be creative is to be fully present and courageous.

Intuitive, suggestive, layered paintings that incorporate multiple processes with a variety of mediums that leave evidence. Colours that push and pull at the washed, stained, scraped and marked surfaces to create rhythm.

07470 466502
art@carlaarmour.com
www.carlaarmourart.com

HOUSE



	M	T	W	T	F	S	S
			1	2	3	4	5
6	7	8	9	10	11	12	
13	14	15	16	17	18	19	
20	21	22	23	24	25	26	
27	28	29	30	31			

Fr 24th: 14.00-20.00

Sa 25, Su 26 & Mo 27: 10.30-18.30

7 Cafe Porteur

210 Church Road, Hove BN3 2DJ



Across The Valley: Gavin Peacock

A series of linocut, risograph and screen prints by **Gavin Peacock** based on a year of long distance cycle rides in France. The prints centre around images of water towers, a recurring feature of the northern French landscape, alongside graphic

elements derived from maps and landscapes. A book of words and photos of the rides will also be available.

Cafe Porteur is open on Saturdays 9.00 - 15.00, and from Tuesday to Friday 8.00 - 14.00

COMMERCIAL-PREMISES



	M	T	W	T	F	S	S
			1	2	3	4	5
6	7	8	9	10	11	12	
13	14	15	16	17	18	19	
20	21	22	23	24	25	26	
27	28	29	30	31			

Sa 09.00-15.00, Tu-Fr 08.00-14.00

8 Matt James Brown

Ground Floor Flat, 7 Osborne Villas, Hove BN3 2RD



Happy Town: Matt James Brown

Matt James Brown is inspired by landscapes, nature and spirit of place - drawing from the seen, the remembered and the imagined. Opening his bright, airy flat on Osborne Villas for the first time, he welcomes all to explore his uplifting, fresh and colourful collection of recent works in watercolour and oils.

Showcasing a range of framed originals, limited edition prints and unique gifts.

07983 770665
mattwatercolours@gmail.com
https://mattwatercolours.com/
www.instagram.com/mattwatercolours

HOUSE



	M	T	W	T	F	S	S
			1	2	3	4	5
6	7	8	9	10	11	12	
13	14	15	16	17	18	19	
20	21	22	23	24	25	26	
27	28	29	30	31			

10.00-17.00

9 Paul Houlton Studio

6 Hove Place, Hove BN3 2RG



Two Aeroplanes: Paul Houlton

Paul Houlton's work is displayed in his working studio, a former chapel just off Hove seafont, and covers a wide range of interests in fifty paintings, drawings and prints. Vorticism, Picasso, Japanese and 20th century British art are some of the themes in this kaleidoscope of art from the 1960s to the present. This is primarily a viewing exhibition although a small number of limited edition prints, affordable fine art prints and greeting cards can be purchased.

01273 733666

mail@paulhoulton.art
www.paulhoulton.art

STUDIO-OR-WORKSHOP



							11.00-17.00	
M	T	W	T	F	S	S		
6	7	8	9	10	11	12		
13	14	15	16	17	18	19		
20	21	22	23	24	25	26		
27	28	29	30	31				

10 Flat 1, 11 Kings Gardens

Flat 1, 11 Kings Gardens, Hove BN3 2PF



fluorescent fern: Katherine Pout

Katherine Pout draws inspiration from nature, particularly birds, plants and life under the ocean. Exicted by intricate texture, she uses bold colours and abstraction to produce artwork with an uplifting and playful message. Fractal patterns and repetition play a big part in her work. Also a marathon runner, her work is designed to create a sense of dynamism and high energy. The tactile surfaces invite the eye in to have fun. Precision cutting is Pout's signature style.

07583 965222

design@katherinepout.com
www.instagram.com/katherine.pout.art

HOUSE



							10.00-17.00	
M	T	W	T	F	S	S		
6	7	8	9	10	11	12		
13	14	15	16	17	18	19		
20	21	22	23	24	25	26		
27	28	29	30	31				

11 Albert Mews Studio

11 Albert Mews, Third Avenue, Hove BN3 2PP



Hove Mugs: Martha Mitchell Design

Come and visit us in our creative studio!

Albert Mews is a working studio and this year visitors will be able to see work in progress as well as work for sale.

Joining resident artists **Lume Lighting** and **Martha Mitchell Design** are the following:

Hove Made Pickles and chutneys

Earth Botanicals

Soap and homeware

Stak Woodwork

Palomita Jewellery

Lili Toth Ceramics

Cassia Beck Paper collages

Lloren Accessories

Lume Lighting Lampshades

Martha Mitchell Design

Homeware and gifts

01273 723116

albertmewsstudio1@gmail.com
www.instagram.com/albertmewsstudio/

STUDIO-OR-WORKSHOP



							11.00-17.00	
M	T	W	T	F	S	S		
6	7	8	9	10	11	12		
13	14	15	16	17	18	19		
20	21	22	23	24	25	26		
27	28	29	30	31				

12 The Flamingo House & Garden

14a Wilbury Road, Hove BN3 3JN



Neon Lights at Low Tide: Michael Steven Harris

- Artually** Prints and cards
- Beauty in Broken** Mosaics
- Charlie Doodle** Prints and candles
- Chikai** Jewellery
- Driftwood Sue** Sculptures
- Graham Carter** Prints and cards
- Hal of Hove** Botanical beauty
- Hove Ceramics** Stoneware
- Helen Rebecca Ceramics** Ceramics
- Kathy Laird** Garden ceramics
- Michael Steven Harris** Photography
- Sally Elford** Lampshades
- Sarah Arnett** Mixed-media
- StephieAnn Design** Textiles
- Wearthy** Jewellery

The Flamingo House welcomes you to its creative nest, showcasing a fantastic flock of artists and makers including the winners of Best Artist & Photographer 2023.

07796 685775

hello@flamingohouse.co.uk
www.flamingohouse.co.uk/

HOUSE



							11.00-18.00	
M	T	W	T	F	S	S		
6	7	8	9	10	11	12		
13	14	15	16	17	18	19		
20	21	22	23	24	25	26		
27	28	29	30	31				

13 The Walker Gallery

2, Queens Place, Hove BN3 2LT



Chaos and Calm: Andy Walker

The Walker Gallery in Hove is tucked down a mews street in central Hove, this artist's studio turns into a pop-up shop for the May festival season.

The Walker Gallery pop-up shop offers a wide range of gifts and artworks that are meaningful and beautiful in a unique and welcoming space.

07793960004
andywalkerart@gmail.com
thewalkergallery.co.uk

STUDIO-OR-WORKSHOP



11.00-16.00						
M	T	W	T	F	S	S
		1	2	3	4	5
6	7	8	9	10	11	12
13	14	15	16	17	18	19
20	21	22	23	24	25	26
27	28	29	30	31		

14 8 Queens Mews

8 Queens Place, Hove BN3 2LT



The King of Kong: Jim Naughten

Jim Naughten is an artist using photography, painting, stereoscopy and AI to explore historical subject matter and wildlife conservation concepts using museum specimens and digital imaging.

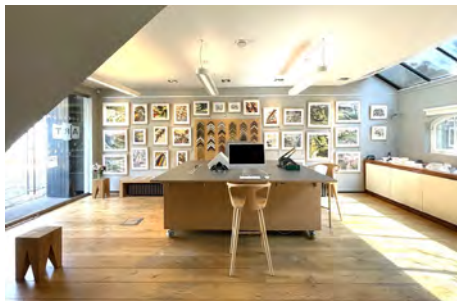
07831 227121
jimnaughten@me.com
www.jimnaughten.co.uk

STUDIO-OR-WORKSHOP

11.00-17.00						
M	T	W	T	F	S	S
		1	2	3	4	5
6	7	8	9	10	11	12
13	14	15	16	17	18	19
20	21	22	23	24	25	26
27	28	29	30	31		

15 Bookroom Art Press

11 Queen's Place, Hove BN3 2LT



The Bookroom Art Press Gallery publishes limited edition prints after 20th century artists Eric Ravilious, Edward Bawden, et al. These prints are on permanent display, and can be purchased directly from us or through our website.

This year we are also exhibiting, and selling, colour woodcut prints after Eric Slater (1896-1963). Slater's woodcuts depict scenes of Seaford, Sussex, where he lived, and from where he established an international reputation.

07729 771249
darion@bookroomartpress.co.uk
www.bookroomartpress.co.uk

GALLERY



11.00-16.00						
M	T	W	T	F	S	S
		1	2	3	4	5
6	7	8	9	10	11	12
13	14	15	16	17	18	19
20	21	22	23	24	25	26
27	28	29	30	31		

16 The Claremont

13 Second Avenue, Hove BN3 2LL



Nicola Hodgson

We are thrilled to be back in May 2024, housing a wonderfully diverse collection of work spanning all mediums by a great variety of artists, including members of the Society of Sussex Painters (visit our website for a complete list).

Our beautiful Victorian Villa is itself a work of art with original period features and delightful walled garden. Refreshments available 12pm-5pm, or upgrade to Vintage Afternoon Tea by advance booking on our website. All profits go to Water Aid.

01273 795161
info@theclaremont.eu
www.theclaremont.eu

COMMERCIAL-PREMISES



11.30-17.30						
M	T	W	T	F	S	S
		1	2	3	4	5
6	7	8	9	10	11	12
13	14	15	16	17	18	19
20	21	22	23	24	25	26
27	28	29	30	31		

17 The Wandering Gallery

The Plaza, Hove Promenade, Brighton BN3 2WN



Clara Wilkinson

Nikki Loy is a multi-media maker with a penchant for oil painting and camper building. This special exhibition of her creations is in ex-Library bus she converted into her studio. With a BA hons in Illustration from Falmouth CA, her vibrant style has a strong

storytelling emphasis.

Visit Nikki painting in her studio, situated on Hove Lawns on 18-19th, and Rushfields Plant Center 8-12th May.

For more events available over the summer, see her website below.

07840 981161
enquiries@nikkiloym.com
www.nikkiloym.com

STUDIO-OR-WORKSHOP



							10.30-18.00						
M	T	W	T	F	S	S	M	T	W	T	F	S	S
6	7	8	9	10	11	12	13	14	15	16	17	18	19
20	21	22	23	24	25	26	27	28	29	30	31		

18 Clara Wilkinson

Flat 1, 33 Adelaide Crescent, Hove BN3 2JJ



Limerance: Clara Wilkinson

Clara will be opening her Regency home by the sea for two weekends in May and also open via appointment during weekdays throughout the month.

Exhibiting new oil paintings, watercolours and her beautifully produced Giclee prints and cards.

clara@clarawilkinsonart.com
@clarawilkinsonart
www.clarawilkinsonart.com

HOUSE



							11.00-17.00						
M	T	W	T	F	S	S	M	T	W	T	F	S	S
6	7	8	9	10	11	12	13	14	15	16	17	18	19
20	21	22	23	24	25	26	27	28	29	30	31		

19 Adelaide Studio

First floor, 27 Adelaide Crescent, Hove BN3 2JH



We're posing the question: How do ideas originate? Join us at VISION—an exhibition featuring sculptures, artworks, art performances, short films, and a series of talks. VISION showcases the sculptures and performances of artist **Paulina Anzorge**, along with a sneak

preview of **Pascal Dowers'** design practice.

Events: 6pm nightly: Thought-provoking talks by award-winning film directors, researchers, and artists; short film screenings, and art performances.

Events are free - booking essential (see website below).

paulinanzorge@gmail.com
www.panzorge.co

HOUSE



11.00-17.00, Evening events 18.00-21.00						
M	T	W	T	F	S	S
6	7	8	9	10	11	12
13	14	15	16	17	18	19
20	21	22	23	24	25	26
27	28	29	30	31		

20 Life Love and Me

25a Palmeira Mansions, Church Road, Hove BN3 2FA



Salthean Sea Ladies: Flo Woolgar-Barrington

Sarah Bagg *Painting*
Holly Swain *Illustration*
Design by Julie Ingham
Coastal prints
Flo Woolgar-Barrington
Illustration
Incey Wincey Studio
Textiles and prints

MegaLilyDesign *Printmaking*
Moth Studio
Textiles and jewellery
Onneke Northcote-Green
Illustration
Hanova Studio *Fashion*
We look forward to welcoming you and hope you find something to make you smile!

sarah@lifeloveandme.co.uk
www.lifeloveandme.co.uk
Instagram.com/lifeloveandme

HOUSE



							10.00-17.00						
M	T	W	T	F	S	S	M	T	W	T	F	S	S
6	7	8	9	10	11	12	13	14	15	16	17	18	19
20	21	22	23	24	25	26	27	28	29	30	31		

21 Number 10

10 Palmeira Square, Hove BN3 2JB

An eclectic mix of artists and makers will be on display in this beautiful Victorian apartment. Some of the owners' collection of Art Deco ceramics and other memorabilia will be on show as well.



Janie Ranger



Art At Number 10

- Helena Roberts *Textiles*
- Gail Anderson *Ceramics*
- Alice Carter *Ceramics*
- Wired and Tangled *Textiles*
- Dani Crompton Designs *Jewellery*
- Sublime Vintage *Textiles*
- Aysenil Senku *Ceramics*
- David Streeter *Photography*
- Rosalind Lymer *Mixed media*
- Janie Ranger *Painting*

- David Ryan *Illustration*
- Lucy Faulke *Painting*
- Lulu McQueen *Jewellery*
- Vintage Victoriana *Textiles*
- Michelle Hockey *Print making*
- Beau Bottletops *Mixed media*
- Claire Scott *Ceramics*
- BrightonView *Mixed media*
- Nicky Edwards *Painting*
- Pam Glew *Painting*

07816 922979
 janieranger@googlemail.com
 janieranger.com

HOUSE



							11.00-17.00	
M	T	W	T	F	S	S		
			1	2	3	4	5	
6	7	8	9	10	11	12		
13	14	15	16	17	18	19		
20	21	22	23	24	25	26		
27	28	29	30	31				

MICK PERRIN WORLDWIDE PRESENTS

EST. 2023

ROCKET FUEL

COMEDY

IGNITING THE BRIGHTEST STAND-UP

THE OLD MARKET

THURSDAY 6 JUNE 8PM

THEOLDMARKET.COM

NJAMBI
MCGRATH
MC

PADDY
YOUNG

DAN
TIERNAN

OLGA
KOCH



Take the **Kemptown Trail** with many fantastic artists' homes, studios and galleries showing original art, printmaking, photography and crafts. Stroll along the seafront or through Kemptown village, taking in Queens Park, Sussex Square and the Marina, with numerous cafes and independent shops along the way.

Pop into our trail venues to enjoy wonderful displays from a wide range of artists and pick up a copy of our Children's Trail as you go along.

www.kemptownartists.org.uk

www.instagram.com/kemptownartists

[@kemptownartists](https://www.facebook.com/kemptownartists)

Travel information

Rail: It takes about 15 minutes to walk from the railway station to the Old Steine and the start of Kemptown.

Bus Numbers 12/13/14 provide regular service from the railway station to Kemptown and along the seafront. The number 7 bus goes from the railway station to Kemptown (direction Marina). The area is very well served by other buses from all parts of the city (see www.buses.co.uk).

Walk: An easy stroll from the city centre along the seafront or St James Street/St Georges Road

Sponsors

Barber Blacksheep Hairdressers
[@barber_black_sheep](https://www.instagram.com/barber_black_sheep)

Seed n Sprout whole food shop
seednsprout.co.uk

Ouse Valley Foods preserves
ousevalleyfoods.com

Nanima Café
nanimacafe.co.uk

Vintage Workshop clothing,
art, homewares

thevintageworkshop.co.uk

Colourstream film lab and framing

colourstream.net

Saint Georges Inn

saintgeorgespub.com

The Kemp pub

Portland Cafe

www.portlandbrighton.com

Leaders Estate Agents

www.leaders.co.uk

Orange Property

www.orangeproperty.co.uk

Brighton College Prep School

www.brightoncollege.org.uk

Kemptown Bookshop

www.kemptownbookshop.co.uk

1 Number 38

38 Arundel Place, Brighton BN2 1GD



Hennerton backwater: Michael Spark

Printmaking and painting, Michael Spark has been successfully exhibiting at Number 38 since 2021. There will be framed original prints

– unique monotypes and carborundum – and paintings based on landscape and sea. There will also be unframed work and greeting cards for sale.

info@michaelspark.com
michaelspark.com
www.instagram.com/michael_spark_art_and_yoga

HOUSE



							11.00-17.00	
M	T	W	T	F	S	S		
		1	2	3	4	5		
6	7	8	9	10	11	12		
13	14	15	16	17	18	19		
20	21	22	23	24	25	26		
27	28	29	30	31				

2 bip-Art Printmaking Studio

1a Arundel Mews, Arundel Place, Brighton BN2 1GG



Rochat Press: bip-Art Printmaking

Welcome to bip-Art, an open-access printmaking studio. Based in a Brighton Mews, bip-Art offers a taste of calm, creativity, community and peace.

Visit the presses, smell the ink, soak in the atmosphere and immerse yourself in the world of printmaking. We have artists at work who are happy to talk and prints for sale.

Find out about our day, evening and weekend printmaking courses, and join us for some respite from the modern world. Limited parking, dogs welcome.

01273 603109
bipart@rocketmail.com
bip-art.co.uk

STUDIO-OR-WORKSHOP



							11.00-17.00	
M	T	W	T	F	S	S		
		1	2	3	4	5		
6	7	8	9	10	11	12		
13	14	15	16	17	18	19		
20	21	22	23	24	25	26		
27	28	29	30	31				

3 East Side Print CIC

Unit 2, Arundel Mews, (entrance on Eastern Place), Brighton BN2 1GG



Materials in the studio: East Side Print

Welcome to East Side Print CIC, showcasing limited edition screenprints, unique cards, t-shirts and printed goods for sale. We are a screenprint studio offering short courses in screenprinting on paper,

printed textiles, cyanotype and printing with natural dyes, plus a studio membership scheme. Visit us to find out more about the studio, our members' work, the techniques that we use and our community outreach programme.

01273 694976
info@eastsideprint.org
www.eastsideprint.org

STUDIO-OR-WORKSHOP



							11.00-17.00	
M	T	W	T	F	S	S		
		1	2	3	4	5		
6	7	8	9	10	11	12		
13	14	15	16	17	18	19		
20	21	22	23	24	25	26		
27	28	29	30	31				

4 The Secret Garden

The Secret Garden, Bristol Gardens, Brighton BN2 0AA



Centre: Rosie Jones

An exhibition of celebrated Sussex Sculptors set in beautiful surroundings.

Julian Wild
Walter Bailey
Rosie Jones
Si Uwins
Mark Stonestreet
Christian Funnell
Mike Pattison
Helen Mary Skelton
Jackie FitzGerald

The Secret Garden is open from 13th April until 2nd June, 2024. Dogs are welcome.

info@secretgardenkempdown.co.uk
www.facebook.com/SecretGardenADT/

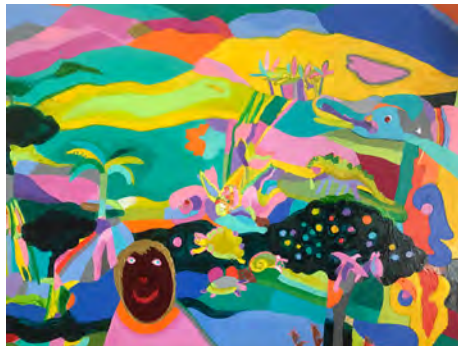
HOUSE



							11.00-17.00	
M	T	W	T	F	S	S		
		1	2	3	4	5		
6	7	8	9	10	11	12		
13	14	15	16	17	18	19		
20	21	22	23	24	25	26		
27	28	29	30	31				

5 One Sussex Mews

1 Sussex Mews, Brighton BN2 1GZ



The Magician (Acrylic on canvas 76cm x 102cm); Sally Henry

Painting, printmaking, drawings
Current work on canvas and
wood panel

Framed and unframed limited
edition prints

07896 700553
sallyhenry04@gmail.com
www.onesussexmewsart.com

STUDIO-OR-WORKSHOP



10.00-18.00

M	T	W	T	F	S	S
6	7	8	9	10	11	12
13	14	15	16	17	18	19
20	21	22	23	24	25	26
27	28	29	30	31		

7 Portland Place

4 Portland Place, Ground Floor, Brighton BN2 1DG



Assorted Works Textiles Amanda Sumpter

Twofolde
Textiles

Amanda Sumpter
Painting and
stone carving

Bouclé
Candles and
home fragrance

Jasper Thims
Ceramics

April March
Jewellery

Chalk and Flint
Ceramics

David Harkins
Painting

Sarah Deere-Hall
Ceramics

Portland Place is the home of contemporary textile artists Twofolde who are opening their doors for the first time. Take time to explore this contemporary collective featuring local artists and makers positioned in the heart of Kemptown village in a historic venue.

07879 631814
twofolde@gmail.com
www.instagram.com/two.folde

HOUSE

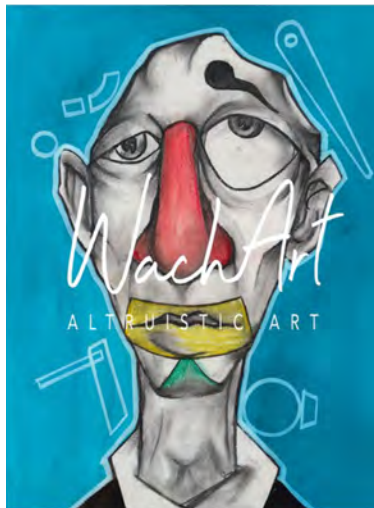


10.00-17.30

M	T	W	T	F	S	S
		1	2	3	4	5
6	7	8	9	10	11	12
13	14	15	16	17	18	19
20	21	22	23	24	25	26
27	28	29	30	31		

6 Mid-Street Lab (by WachArt)

80 St George's Road, Brighton BN2 1NA



It's going to be all right - WachArt Private Collection / Dr. Oliver Laengen



Variation 21 - WachArt Private Collection / Betty Palmont

Step into our brand-new gallery-showroom in Kemptown, where artistic wonder meets community empowerment. Altruistic Art is our guiding light, showcasing local talent and spreading positivity through vibrant imagery. Meet resident artists like **Ole Skauge**, emerging talent **D. Calder** and the enigmatic **Broken Glass** for live sessions and signatures while you immerse yourself in the exhibition*.

Nestled in vibrant Kemptown Village, steps from Sussex County Hospital and the seafront, The Mid-Street Lab invites you to lose yourself in time. Enjoy Barcelona seaters, a plush rug, and local libations from local suppliers such as The Well, The Buttlr, or La Gente de Mezzal. Discover creativity, community, and relaxation here!

* Special events, evenings and after-works to be communicated closer to the date, stay tuned via website and WhatsApp group!

07714 002811
info@midstreetlab.com
www.midstreetlab.com

GALLERY



11.00-16.00

M	T	W	T	F	S	S
		1	2	3	4	5
6	7	8	9	10	11	12
13	14	15	16	17	18	19
20	21	22	23	24	25	26
27	28	29	30	31		

8 Sea Lanes Brighton

300 Madeira Drive, Brighton BN2 1BX

Sea Lanes Amy Frankie Smith



A unique and versatile events space on Madeira Drive in Brighton. With stunning views and quality food and drink options, it's a great space to come and view some amazing local art.

01273 044163
events@sealanesbrighton.co.uk
www.sealanesbrighton.co.uk/

COMMERCIAL-PREMISES



- Amy Frankie Smith**
Ceramics
- Emily Portnoi**
Jewellery
- Becca Twist**
Digital media
- Ellen Richardson**
Photography
- Catherine Grimaldi**
Textiles and painting
- Jon Stubbs**
Photography
- Hannah Cole**
Painting
- Emma de Polnay**
Mixed media
- Ben Fearnside**
Mixed media
- Beth Chaplin Jeweller**
Sophie Slater
So English beachwear
- Lynette Slight**
Photography

		09.00-17.00						
M	T	W	T	F	S	S		
		1	2	3	4	5		
6	7	8	9	10	11	12		
13	14	15	16	17	18	19		
20	21	22	23	24	25	26		
27	28	29	30	31				

9 Patsy McArthur

Flat 2, 77 Marine Parade, Brighton BN2 1AE

Beach Ballroom (below) Patsy McArthur



Established Scottish figurative artist, **Patsy McArthur**, opens her home on Brighton's seafront with a solo show of drawings, paintings and prints, in a beautiful Regency building on the seafront with jaw-dropping views of the sea and the iconic pier.

The figure in movement is her ongoing inspiration, and this collection references fashion editorial as well as her continuing interest in dance. Patsy's career spans 20 years and she is represented by galleries throughout the UK and abroad.

07825 291192
hello@patsymcarthur.com
www.patsymcarthur.com

HOUSE



		10.30-17.00						
M	T	W	T	F	S	S		
		1	2	3	4	5		
6	7	8	9	10	11	12		
13	14	15	16	17	18	19		
20	21	22	23	24	25	26		
27	28	29	30	31				

10 House of Pop!

Flat 1, 27 New Steine, Brighton BN2 1PD



Brighton beefcake: Dave Pop!

Dave Pop! is known around Brighton for his street art and murals in many bars and restaurants, using traditional fairground and tattoo style to create contemporary pop art, with a generous topping of seaside sauce! This year he is joined by:
Haus of Lucy
Ceramics
Wulfmantiki
Ceramics
Fway Lawn
Jewellery

07902 397133
dave@davepopart.com
www.davepopart.com

HOUSE



		11.00-18.00						
M	T	W	T	F	S	S		
		1	2	3	4	5		
6	7	8	9	10	11	12		
13	14	15	16	17	18	19		
20	21	22	23	24	25	26		
27	28	29	30	31				

11 Pepper Pot Pottery

Sew Chic Shop, 49 George Street, Brighton BN2 1RJ



Pepperpot Pottery Workshop: Bex Scrivins

We are a shared community studio, home to the wonderful talents of five Sussex-based ceramicists. Used daily as a means of creative expression, producing a variety of work from sculptural ceramics, functional pottery to mixed media, print and painting. You never know

what you might find; prints to admire, work to take home and available weekly classes hosted by the artists themselves.

07929 163667
bex@bexscrivins.com
www.instagram.com/bex.scrivins_ceramics/

STUDIO-OR-WORKSHOP



- Bex Scrivins** *Ceramics*
- Bird & Beach** *Ceramics*
- Kristina Engqvist** *Mixed media*
- Annie Lyle** *Ceramics*

		10.00-17.00						
M	T	W	T	F	S	S		
		1	2	3	4	5		
6	7	8	9	10	11	12		
13	14	15	16	17	18	19		
20	21	22	23	24	25	26		
27	28	29	30	31				

12 Swimscape + Musicpots

19 Devonshire Place, Brighton BN2 1QA



Pre-swim chat; Alli Harmer Williams

Alli Harmer Williams

Painting

Capturing the camaraderie, joy and exuberance of sea swimming in its infinite variety and colour.

Simon Mathews

Ceramics, hand-thrown pottery

I make pots I hope are both beautiful to look at and intended to be used. I'm inspired by the colours in the sea and the sensations of wind, from light and shadow in different seasons. I produce a small number of pots each year, allowing time to concentrate on each one.

07970 924999
alli@swimscape.co.uk
swimscape.co.uk

10.00-17.00						
M	T	W	T	F	S	S
6	7	8	9	10	11	12
13	14	15	16	17	18	19
20	21	22	23	24	25	26
27	28	29	30	31		

HOUSE



13 At The Coach House

22 Walpole Road, Brighton BN2 0EA



We are delighted to be hosting a mixed choice of artists' works and creations here at the Coach House this year.

Artists: **Gemma Challenger, Scarlet Ostick, Margaret Shillan, Dona Crisfield, Keziah Furini, Polly Mandell, Eda Gardner-Groves, Carolyn Cox, Barbara Ryan, Julia White** and the **Silver Stream Vintage**.

Do venture up our drive, past the apple, quince and pear trees, where you will find our hidden grove. We offer workshops, talks, herbal walks, tea and cake.

07796 054442
sjglenninning@googlemail.com
www.atthecoachhouse.com

12.00-18.00						
M	T	W	T	F	S	S
6	7	8	9	10	4	5
13	14	15	16	17	11	12
20	21	22	23	24	18	19
27	28	29	30	31	25	26

HOUSE



14 Brighton College Prep School

Walpole Lodge, 2 Walpole Road, Brighton BN2 0EU



A Midsummer Night's Dream: Jess, 12



Winter Landscape: Sienna

Please join us to view a range of pieces created by our pupils aged 5 to 12 years of age. Our exhibition celebrates a diverse range of skills and a wide range of taught techniques. It includes paintings, prints and ceramics, set design and digital art, alongside other examples that showcase our pupils talents in both curriculum art lessons and specialist art clubs. We look forward to welcoming you to our third exhibition!

01273 704210
tbates@brightoncollege.net
www.brightoncollege.org.uk/prep-school/

10.00-16.00						
M	T	W	T	F	S	S
6	7	8	9	10	11	12
13	14	15	16	17	18	19
20	21	22	23	24	25	26
27	28	29	30	31		

EDUCATIONAL-INSTITUTION

15 The Villa Studio

11 Walpole Terrace, Brighton BN2 0EB



Stairing Vortex: Matthew Cattell

The Villa Studio is delighted to exhibit works of awarding winning photographer **Matthew Cattell** Landscape Photographer of the year 2016. His work has appeared in a wide range of publications, front covers Sunday Times magazine, National Geographic Traveller.

Philip Dunn *Painter*
Stephanie Else *Glass art fusion*
Ulrika Jarl *Illustrations*
Ilona Drew *Landmarks*
Juliet Walters *Ceramics*
Diana Garnier *Photography*

07792 489748
 diana.thevilla@gmail.com
 www.thevillastudio.co.uk

HOUSE



	M	T	W	T	F	S	S
		1	2	3		4	5
	6	7	8	9	10	11	12
	13	14	15	16	17	18	19
	20	21	22	23	24	25	26
	27	28	29	30	31		

16 The Little Giraffe House

29 Canning Street, Brighton BN2 0EF



Mighty Redwood: Clair Butler (ClairyB)

Clair and Sarah, the artists behind The Little Giraffe House, are both inspired by colour, form and unusual perspectives of animals, nature and the local surroundings. They are joined by guest artists with a similar essence to their work, forming a fun house full of colour. Prints, cards and gifts for sale.

Clair Butler (ClairyB)
Prints and needlefelt

Sarah Goodfellow
Print, ink and mixed media

Holly Crompton
Illustration

Kat Crossley
Automata

Octavia Verity
Pen and ink

07954 162213
 thelittlegiraffehouse@gmail.com
 www.instagram.com/thelittlegiraffehouse

HOUSE



	M	T	W	T	F	S	S
		1	2	3		4	5
	6	7	8	9	10	11	12
	13	14	15	16	17	18	19
	20	21	22	23	24	25	26
	27	28	29	30	31		

17 Round Georges Pub

14-15 Sutherland Road, Brighton BN2 0EQ



Golden Touch: Katy Bartlett

"I like to be bold and striking. I use acrylic paints often with golds and metallics, but enjoy experimenting with different mediums allowing me to express different ideas. With influences as divers as abstract New York City skylines to botanical studies and oriental styled pieces, I like to be free to experiment, rather than restrict myself to a particular genre." **Katy Bartlett**, exhibiting artist.

The Round Georges is a small local pub serving the north Kemptown community.

01273 691833
 info@theroundgeorgesbrighton.co.uk
 www.theroundgeorgesbrighton.co.uk

COMMERCIAL-PREMISES



12.00-24.00, except Tu					12.00-19.00								
M	T	W	T	F	S	S	M	T	W	T	F	S	S
		1	2	3	4	5							
6	7	8	9	10	11	12							
13	14	15	16	17	18	19							
20	21	22	23	24	25	26							
27	28	29	30	31									

18 The Lanes Hotel

The Lanes Hotel, 70-72 Marine Parade, Brighton BN2 1AE



Ding Dong King Kong: Ian Blaxstone-Leaver

The Lanes Hotel welcomes you to enjoy the works of local artists **Ian Leaver-Blaxstone** and **Beki Adam**.

Originally a graphic designer, Ian developed his signature artist style experimenting with bold, bright images, enfolding fragments of the modern world within B-movie, mythology, folklore and sci-fi themes. **1st-15th May.**

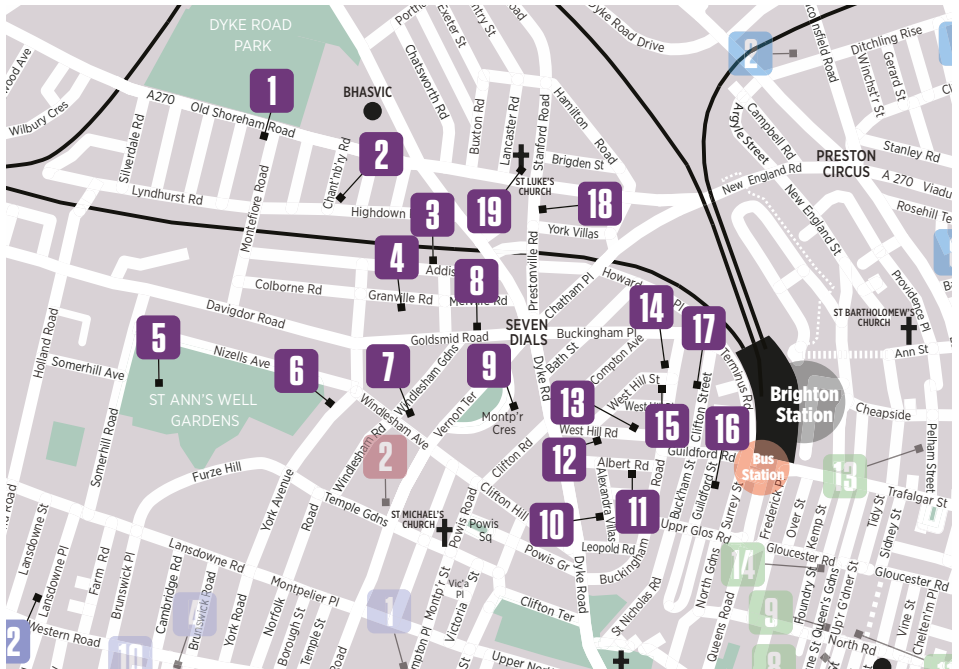
The *Sky Series* misty and nocturnal paintings with sheep and UFOs are inspired by Beki's South Downs home on Wolstonbury Hill and her interest in observation of mind and space. **16th-31st May.**

www.beavart.co.uk
 https://www.instagram.com/beavart/
 beklart

COMMERCIAL-PREMISES



					11.00-23.00								
M	T	W	T	F	S	S	M	T	W	T	F	S	S
		1	2	3	4	5							
6	7	8	9	10	11	12							
13	14	15	16	17	18	19							
20	21	22	23	24	25	26							
27	28	29	30	31									



Seven Dials is a vibrant and inclusive trail, with a diverse range of venues hosting a great line up of artists, designers and makers. In our large trail we have exciting new houses along with many familiar favourites, some offering refreshments, gardens with sculpture or artists' studios. This year's brochure cover artist and last year's best Open House winner, Sarah Arnett, is opening her colourful home-studio again. It's a great opportunity to meet the artists and creatives in their homes, visit their exhibitions and find beautiful artwork and handcrafted gifts away from the high street. The area is full of community spirit, with many local cafes and bars, and has easy transport links around the city and beyond.

www.instagram.com/7dialsart

www.facebook.com/SevenDialsArtists

Travel Information

Walk: The trail is an easy walking route close to Brighton Station and the town centre.

Bus: No.7 stops at the 7 Dials roundabout and 14 & 27 travel along Dyke Road.

Rail: Brighton Station is a five-minute walk to start of the trail.

Car: Pay by app parking bays throughout the trail, free parking on Sundays in zone O

Sponsors

Parker Bathrooms
www.parkerbathrooms.co.uk

Hellenic Bakery
isabelle2018181@gmail.com

ArtFlo [insta @art_flo_brighton](https://www.instagram.com/art_flo_brighton)

Bousham Gallery
www.boushamgallery.com

Uden Estate Agents
property@udenestateagents.co.uk

Teddy Edwards Cutting Rooms
www.teded.co.uk

Brewers brighton@brewers.co.uk

Bookkeeping Room
isabelle2018181@gmail.com

Hi Cacti www.hicacti.com

Soliflore [insta @soliflore_store](https://www.instagram.com/soliflore_store)

Dressmith www.dressmith.com

Utility www.utilitygreatbritain.co.uk

Caroline Jory Coaching
www.carolinejorycoaching.com

SaltSpace www.saltspace.co.uk

Rebellious Jukebox
[insta @rebelliousjukeboxrecords](https://www.instagram.com/rebelliousjukeboxrecords)

Lloyds Lettings
sam@lloydsettings.com

Brighton Open Air Theatre (BOAT)
www.brightonopenairtheatre.co.uk

The Palmeira Practice
www.thepalmeirapractice.org.uk

1 Pioneer Arts @ Montefiore

36 Montefiore Road, Hove BN3 6EP



Susan with flowers and diamonds: Susan Street

Pioneer Arts at Montefiore, formerly Montefiore Artists, look forward to welcoming you this May to see their latest expressive and thoughtful artwork. This year's show will shine a spotlight on our featured artists with a fresh approach to displaying their rich and diverse work in

a range of media, including printmaking, drawing, painting, photography, mosaics and textiles.

All the work in the exhibition is made by artists with lived experience of learning disabilities and/or autism.

07848 456103
ewillecocks@grace-eyre.org
www.grace-eyre.org

COMMUNITY



						12.00-16.00	
M	T	W	T	F	S	S	
	1	2	3		4	5	
6	7	8	9	10	11	12	
13	14	15	16	17	18	19	
20	21	22	23	24	25	26	
27	28	29	30	31			

3 BouSham At Home

13 Addison Road, Hove BN3 1TQ



BouSham At Home
Shyama Ruffell / Clair Boublil

Shyama Ruffell
Paintings and prints

Clair Boublil
Jewellery and art glass

Colin Ruffell *Paintings*

Fran Slade *Prints and cards*

Gabriele Ghiani *Terracotta busts*

Robyn Neild *Bronze sculpture*

Josse Davis *Raku animals*

Alex Hollingworth
Ceramic vessels

Guy Holder *Ceramic birds*

Catherine Fox *Garden metalwork*

Welcome to our 'at home' exhibition showcasing exceptional, established artists from our Brighton Gallery.

Garden, studio, plus tea and homemade cakes.

07979 887677
boushangallery@gmail.com
www.instagram.com/boushangallery

HOUSE



						11.00-17.00	
M	T	W	T	F	S	S	
	1	2	3		4	5	
6	7	8	9	10	11	12	
13	14	15	16	17	18	19	
20	21	22	23	24	25	26	
27	28	29	30	31			

2 Salon des Sources

4 Chanctonbury Rd, Hove BN3 6EL



Porcelain sculpture: Sophie Woodrow

Considered by many to be a little gem of an Artist's Open House, the Salon is jam-packed full of creative wares, including our newbies: leather accessories designer Renush, abstract landscape painter Clair Ballantyne, coil potter Hilary Crozier and paper-cut artist Sylvie Howitt.

We are thrilled to also welcome back our International guest artist Sophie Woodrow. Her hauntingly beautiful porcelain creatures are collected worldwide.

Prepare to spend, you will find many things here to tempt you and priced for every pocket.

Textiles bags and accessories

One of a Kind Bags

Melanie Hodge

Halinka Fairies

Atelier Bricolage

Susan Kennewell

Renush Accessories

Painting and paper-cuts

Pru Heath

Clair Ballantyne

Sylvie Howitt

Jewellery

Wild Blooms

Fiona Hutchinson

Sarah Packington

Ceramics

Sophie Woodrow

Yolande Sheppard-Walters

Hilary Crozier

Dulse Ceramics

Jacqueline Buckeridge

Sandrine Can Diermas: Sylvie Howitt



01273 880385
jaqcards@ntlworld.com
www.facebook.com/salondesources

HOUSE



						11.00-17.00	
M	T	W	T	F	S	S	
	1	2	3		4	5	
6	7	8	9	10	11	12	
13	14	15	16	17	18	19	
20	21	22	23	24	25	26	
27	28	29	30	31			

4 Cecil Rice

14 Granville Road, Hove BN3 1TG



West pier, sunlit sea: Cecil Rice



Palazzo at dusk, Venice: Cecil Rice



Royal Pavilion, Brighton: Cecil Rice



The Wave: Cecil Rice

Cecil welcomes you to his Edwardian home and studio at the vibrant Seven Dials for his silver 25th Open House exhibition.

Winner of 2018 AOH Best Painting Award.

On view will be a specially chosen selection of original watercolours and oils of Brighton, Venice and Sussex, featuring cityscapes, seascapes and landscapes. Artist-made prints and a range of greetings cards are also available. Exciting new watercolour workshops coming in June – please see website.

07436 004833
 cecilrice@gmx.co.uk
 www.cecilrice.co.uk

HOUSE



							11.00-17.00	
M	T	W	T	F	S	S		
		1	2	3	4	5		
6	7	8	9	10	11	12		
13	14	15	16	17	18	19		
20	21	22	23	24	25	26		
27	28	29	30	31				

5 St Ann's Well Gardens Hove

St Ann's Well Gardens, c/o Garden Cafe, Somerhill Road, Hove BN3 1RP



St Ann's Well Gardens: EcoOctopus

Join us in our beautiful park to enjoy a range of work from talented local artists – textiles, stationery, ceramics, prints and jewellery. Plus delicious food and drink from the Garden Cafe, live music and entertainment.

07799 200953

pippa@fosawg.org
friendsofstannswellgardens.org

COMMUNITY



Artists include:

- Ben Page**
Mixed media
- EcoOctopus**
Jewellery
- Louisa Kazig**
Print making
- Dr Ayanna Knight**
Jewellery
- Lilli Toth**
Ceramics
- Colin Irvine**
Turned wood
- Molly Gibbons**
Illustration
- Danny Jubb**
Mixed media
- Steve Bicknell**
Sculpture

	11.00-17.00						
	M	T	W	T	F	S	S
	6	7	8	9	10	11	12
	13	14	15	16	17	18	19
	20	21	22	23	24	25	26
	27	28	29	30	31		

6 The Little Picture Palace

Flat 2, 33 York Avenue, Brighton BN3 1PJ



Tamsin Morgan

Enter the world of all things Sarah Arnett this May during Artists Open Houses. With new artworks and homeware, beautiful clothing and exciting talks and workshops on offer. Sarah Arnett's home is open every weekend between 11am-5pm. With visiting artists and speakers, workshops every Friday and a Sunday Salon each weekend.

- Sarah Arnett**
Fine art prints, wallpaper, textiles and clothing
- Vivienne Ridley**
Jewellery
- Holly M Atelier**
Leather bags and accessories
- Maria Tilyard**
Cushions
- Raw Solace**
Jewellery
- Corpo Sancto**
Candles and scents

07720719966

sarah@saraharnett.co.uk
www.saraharnett.co.uk

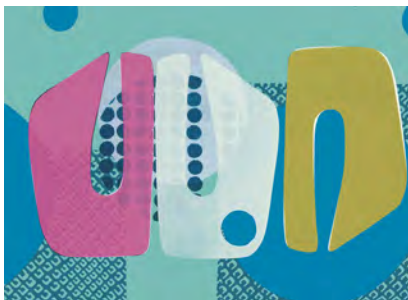
HOUSE



	Fr 13.00-17.00, Sa-Su 11.00-17.00						
	M	T	W	T	F	S	S
	6	7	8	9	10	11	12
	13	14	15	16	17	18	19
	20	21	22	23	24	25	26
	27	28	29	30	31		

7 Claire O'Hea

2 Windlesham Gardens, Brighton BN1 3AJ



Floating Above the Coral Reef Below: Claire O'Hea

Claire O'Hea

Light • shadow • colour • form • painting • mixed media • landscape • still life. Drawing • pace • fast • slow • looking • focus • channel • flow • connection. Textiles • design • fabric • silk • matt • shiny • cushions • interior accessories. Exploring the various ways and means in which a creative idea can be expressed through a variety of mediums and practises. Please feel free to drop by and share your own personal ideas and thoughts about what creativity means to you?

07946 182586

claire.ohea@googlemail.com
www.instagram.com/claire.ohea

HOUSE



	Sa & Su 11.00-17.00						
	Weekdays by appointment						
	M	T	W	T	F	S	S
		1	2	3	4	5	
	6	7	8	9	10	11	12
	13	14	15	16	17	18	19
	20	21	22	23	24	25	26
	27	28	29	30	31		

8 The 19 Goldsmid Road House

Flat 3, 19 Goldsmid Road, Hove BN3 1QA



Robin Ajder

This year the 19 Goldsmid Road House opens its doors for the first time. **Robin Ajder** will be exhibiting his bright, colourful and uplifting abstract paintings, inspired by his journey

recovering from addiction and mental health. Robin looks forward to welcoming you to his home studio and having a friendly chat.

07527 027296

robinajder@gmail.com
www.robinajderart.com/

HOUSE



	10.00-17.00						
	M	T	W	T	F	S	S
			1	2	3	4	5
	6	7	8	9	10	11	12
	13	14	15	16	17	18	19
	20	21	22	23	24	25	26
	27	28	29	30	31		

9 Art at 21

21 Montpelier Crescent, Brighton BN1 3JJ



Room to Move: Nick Gardner

Art at 21 returns for a fourth year to our beautiful Regency Montpelier Crescent house. We are showing an exciting mix of artists and designers exhibiting contemporary work ranging from innovative new paintings and textiles to elegant monotypes and refined sculpture.

- Gary Goodman** *Painting*
- Kate Strachan** *Painting*
- Rebecca Angel** *Mixed media*
- Nick Gardner** *Painting*
- Ingrid Boucher** *Sculpture*
- Sarah Mitchener** *Print making*
- Bryn Pratt-Boyd** *Textiles*
- Lucy Bristow** *Painting*

07527 447308
nick.gardner100@gmail.com
<https://nickgardnerart.com>

HOUSE



11.00-17.00						
M	T	W	T	F	S	S
6	7	8	9	10	4	5
13	14	15	16	17	11	12
20	21	22	23	24	18	19
27	28	29	30	31	25	26

10 Alizeti Creative

Side Flat 1, 3 Alexandra Villas, Brighton BN1 3RE



Gelli print: Renee Graham Adriani

- Renee Graham Adriani**
Gelli-prints
- Glencie Hoffmann**
Handmade ceramics
- A Little Cup Tea**
Tea blends and sampling
- Eleanor Walker-Todd**
Japanese textiles
- Mia Sargent** *Painting*
- Wild Flora** *Jewellery*
- Mike Savage**
Garden sculpture
- Ellie Drake-Lee**
Glass garden art
- Kathy Laird**
Garden ceramics

Come and browse our exciting collection of wonderful work by talented artists and relax in the beautiful garden with tea and cake. Centrally located and ever-popular - don't miss us!

07770 287245
reneeoutthere@yahoo.co.uk
www.instagram.com/reneeadriani

HOUSE



11.00-17.00						
M	T	W	T	F	S	S
6	7	8	9	10	4	5
13	14	15	16	17	11	12
20	21	22	23	24	18	19
27	28	29	30	31	25	26

11 The Albert Road House

Flat 2, 24 Albert Road, Brighton BN1 3RN



Oiseau Assis: Mathias Hermann Löffler

This year The Albert Road House is running a solo exhibition showing the paintings and monotypes of **Mathias Hermann Löffler**.

07478 685536
ms.h.loeffler@gmail.com

HOUSE



Come along, discover the process, see the studio and have a chat.

11.00-17.00						
M	T	W	T	F	S	S
		1	2	3	4	5
6	7	8	9	10	11	12
13	14	15	16	17	18	19
20	21	22	23	24	25	26
27	28	29	30	31		

12 Peggy Poppleton & Friends

20 West Hill Road, Brighton BN1 3RT



Demeter - ceramic tile Peggy Poppleton

Pop into Peggy's to enjoy a carefully curated selection of work by some of Sussex's finest artists and artisans. Reliably delightful.

- Rue Asher** *Painting*
- Ken Eardley** *Ceramics*
- Atelier Stella** *Ceramics*
- Peggy Poppleton** *Ceramics*

07874 201713
peggypoppleton@hotmail.co.uk

HOUSE



- Emma Stanton** *Jewellery*
- Sarah Gamble** *Mixed media*
- Ginger & Brown** *Textiles*
- Seven Seventeen**
Scented homewares
- Sarah Bidwell** *Textiles*
- Emily Warren - Stealthy Rabbit**
Illustration

11.00-17.00						
M	T	W	T	F	S	S
		1	2	3	4	5
6	7	8	9	10	11	12
13	14	15	16	17	18	19
20	21	22	23	24	25	26
27	28	29	30	31		

13 Sarah Weedon

31 West Hill Road, Brighton BN1 3RT



Night Ride: Sarah Weedon

Preferring to be part of the landscape, Sarah paints directly en plein air as well as drawing and sketching in oils. Painting in all seasons to experience the change in qualities of light, colour and sound, with a

commitment to the emotional force, it is often the end of day skies that are central to her work. Sarah studied at Camberwell College of Arts 1991-1994 and is represented by galleries in London and Brighton.

Sorry, no dogs please.

07766 235270

sweedon@icloud.com
sarahweedon.com

HOUSE

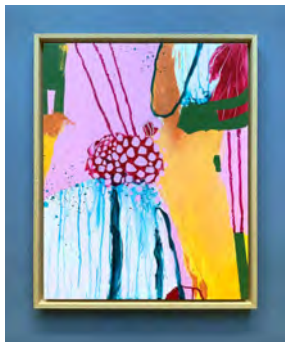


11.00-17.00

M	T	W	T	F	S	S
		1	2	3	4	5
6	7	8	9	10	11	12
13	14	15	16	17	18	19
20	21	22	23	24	25	26
27	28	29	30	31		

14 Chanchala

41 Buckingham Road, Brighton BN1 3RP



Wildflower: Chanchala

I've been painting up a storm this year and invite you to see selected new works on paper and panels. This year's selection is mostly inspired by walks in woodlands and wild gardens. Plus of course florals and botanicals in my signature vibrant, joyous colours.

This is in addition to my one-of-a-kind jewellery and 'painted with a flame' wall clocks and upcycled mantel clocks.

You're also warmly invited to visit the metal workshop and painting studio upstairs for a look behind the scenes.

info@chanchala.co.uk

www.chanchala.co.uk/
www.instagram.com/bychanchala/

HOUSE



11.00-17.00

M	T	W	T	F	S	S
		1	2	3	4	5
6	7	8	9	10	11	12
13	14	15	16	17	18	19
20	21	22	23	24	25	26
27	28	29	30	31		

15 Print House

38 Buckingham Road, Brighton BN1 3RP



Vetements de Travail: Jonny Hannah

Stephen Anderson
Screenprints and riso

Ray Dennis
Mezzotints, dry point and etchings

Stig Evans
Monoprints and giclee

Jonny Hannah
Screenprints, books and cut outs

Patrick O'Donnell
Screenprints

Heike Roesel
Etchings

Simon Tomlinson
Etchings

Print House celebrates a wide range of print practice from screenprint, etching and mezzotint to combined works. A wide selection of reasonably priced prints, books and cards ranging from rich layered graphic works to colourful abstracts.

07753 262014

print.house@38@gmail.com
www.instagram.com/printhouse_38/

HOUSE



11.00-17.00

M	T	W	T	F	S	S
		1	2	3	4	5
6	7	8	9	10	11	12
13	14	15	16	17	18	19
20	21	22	23	24	25	26
27	28	29	30	31		

16 Rex Ashlock Retrospective

30 Guildford Street, Brighton BN1 3LS



Woman in a Bath: Rex Ashlock

This Open House is dedicated to Rex Ashlock (1918-1999), an American artist who worked and taught in New York and California, with family in Sussex since 1978. Following the recent sale of many larger oil paintings at auction in the U.S., we are

opening for a third year, showing smaller works in a variety of media, most not previously exhibited. Highlights include two paintings of the sea - a favourite theme - and a gouache of a woman in a bath.

07342 081755

rexashlocktrust@gmail.com
www.rexashlocktrust.com/

HOUSE



11.00-17.00

M	T	W	T	F	S	S
		1	2	3	4	5
6	7	8	9	10	11	12
13	14	15	16	17	18	19
20	21	22	23	24	25	26
27	28	29	30	31		

17 Abigail Bowen

22 Clifton Street, Brighton BN1 3PH



Peggy Abigail Bowen

I like to say I paint 'The Edge of The Rainbow'. The term comes from Donna Tartt's novel, *The Goldfinch*, describing a space just beyond reality, where beauty, magic and art exists. My paintings attempt to conjure this space, to grasp what lies just

beyond what we can see. It's a place that is blurry, shimmering, impossible to capture. I was born in Brighton and studied at Chelsea School of Art.

Please check website for current availability.

01753 747307

info@abigailbowen.com
www.abigailbowen.com/

HOUSE



11.00-17.00

M	T	W	T	F	S	S
	1	2	3	4	5	
6	7	8	9	10	11	12
13	14	15	16	17	18	19
20	21	22	23	24	25	26
27	28	29	30	31		

18 Art at Blue Door Bijou

22a Prestonville Road, Lwr Ground Floor, Brighton BN1 3TL



Garda I: Emma Sperring

In the heart of vibrant Seven Dials, Emma Sperring will be opening her home for the first time, showing some of her own original still life and landscape artworks in oil, alongside some fabulous guest artists and makers.

Sheri Gee *Painting*

Emma Sperring *Painting*

Louise Ineson *Jewellery*

Chris Heape *Ceramics*

Helen Cowan

Textiles and wood carving

emmasperring@hotmail.com

www.instagram.com/emmasperring_art/

HOUSE



11.00-17.00

M	T	W	T	F	S	S
	1	2	3	4	5	
6	7	8	9	10	11	12
13	14	15	16	17	18	19
20	21	22	23	24	25	26
27	28	29	30	31		

19 St. Luke's Church Prestonville

64 Old Shoreham Road, Brighton BN1 5DD



For A Time: Toby Adamson

South coast towns have experience of asylum seekers and refugees risking their lives crossing the channel in small boats, or are placed in hotels by the Home Office.

This exhibition explores the story of the response of a North Devon coastal community welcoming sanctuary seekers to their community 'for a time'.

A free evening event on Sunday 19th May, 7pm in St. Luke's, with contributions from Brighton & Hove refugee organisations. Visit www.beyondchurch.co.uk for more info..

Sa 10.00-14.00, Su 13.00-17.00

M	T	W	T	F	S	S
	1	2	3	4	5	
6	7	8	9	10	11	12
13	14	15	16	17	18	19
20	21	22	23	24	25	26
27	28	29	30	31		

01273 55772

info@stlukesonline.co.uk
www.stlukesonline.co.uk

COMMUNITY



FRAME FACTORY

High quality contemporary framing & giclée printing

Framing

Bespoke framing

Exhibition framing

Mount cutting

Canvas stretching

Box framing

Friendly professional advice

Printing

Large format printing

Printing onto canvas

Limited edition giclée printing

01273 609207

www.frame-factory.co.uk

info@frame-factory.co.uk

7 Sydney Street, Brighton, East Sussex, BN1 4EN



Artist's Open House
Sponsors & Print
Partner 2024

From design concepts
and excellent printing
to mailing and
fulfilment services.

Talk to the expert local
team who can help you.

Contact us on:
01273 464 884
hello@gemini-print.co.uk



Stroke of Genius.



 Gemini Print.

latest 

At the heart
of the city...

...we've got it
covered

Freeview 7 • Virgin 159 • thelatest.co.uk



West Hove Arts Trail is a vibrant, friendly, eclectic mix of houses and studios, exhibiting a wide range of art, crafts, and design, with each venue having its own distinctive personality. Trail members frequently appear in AOH awards shortlists. Find us between Sackville Road and Boundary Road, the railway line and the sea. With an easy amble between the fourteen venues on the flat streets of this part of Hove, and with fantastic transport links, following the trail is a perfect day out.

@westhoveartstrail

Travel Information

Bus: number 7 to Hove Station, numbers 5, 5a, and 5b to Sackville Road, numbers 1, 1a, and 6 along New Church Road, numbers 2, 46, and 49 along Portland Road. Stagecoach 700 runs along the seafront

Train: Hove, Aldrington, and Portslade stations have regular services from Brighton and London Victoria as well as the South Coast line.

Sponsors

We would like to thank this year's sponsors:
 Lawrence's Art Shop
 Shoreline Stores
 Studio 9 Design

1 The Round Space Studio

6 Worcester Villas, Hove BN3 5TB



Hawthorn: James Baker

We welcome your visit to The Round Space, designed and hand-crafted by the artist.

James Baker is a carpenter, artist and maker inspired by the landscape, producing charcoal drawings and paintings. Also for sale are pieces made from locally sourced branch wood and recycled materials to create lamps, and rustic furniture.

He will be joined by **Dan Johnson**, metal artist who uses scrap and repurposed steel, **Wolfram Lohr**, handcrafted leather products and **Sarah Gardner**, basket maker.

07860 200631
jamesbakerdesign@gmail.com
www.jamesbaker.org

STUDIO-OR-WORKSHOP



							11.00-17.00	
M	T	W	T	F	S	S		
		1	2	3	4	5		
6	7	8	9	10	11	12		
13	14	15	16	17	18	19		
20	21	22	23	24	25	26		
27	28	29	30	31				

2 11welbeck

11 Welbeck Avenue, Hove BN3 4JP



Walnut bowl with stoneware spherical vessel: Matt Hall and Sarah Deere-Hall

Familiar and new work. Considered, textural, gorgeous. Coffee, tea and homemade cake in our garden.

01273 735698
sjd01@mac.com
www.instagram.com/11welbeck

HOUSE



Betty Webb
Wild Things
Assembled creatures and paper vessels

Emma Gale
Textile print and collage et al.
Paper, ink and wire

Janifer Wall
Contemporary silver jewellery

Jerry Webb *Collage*

Matt Hall
Wooden bowls

Sarah Deere-Hall
Ceramic vessels

Sue Kirk
Contemporary willow baskets and sculpture

Tabitha Bargh
Sustainable lighting

Trisha Rafferty
Narrative jewellery

Ursa Brown
Hand dyed textiles

							11.00-17.00	
M	T	W	T	F	S	S		
		1	2	3	4	5		
6	7	8	9	10	11	12		
13	14	15	16	17	18	19		
20	21	22	23	24	25	26		
27	28	29	30	31				

3 Ilana Richardson & Guests

66 Langdale Gardens, Hove BN3 4HH



Afternoon Harbour: Ilana Richardson

Ilana's iconic sun drenched Mediterranean paintings will warm your heart. You'll feel you are there in the heat.

Ilana Richardson
Paintings and prints

Claire Gill *Photomontage*

Cicada Jewellery *Jewellery*

Amy Burrows *Linocuts*

Shefton Kaplan
Domestic pottery

Terry Guile *Jewellery*

Lisa Green *Paintings*

Emma Stanton *Jewellery*

Katrina Miller *Baskets*



Bahia: Ilana Richardson

07947327690
art@ilana-richardson.com
www.ilana-richardson.com

HOUSE



							11.00-17.00	
M	T	W	T	F	S	S		
		1	2	3	4	5		
6	7	8	9	10	11	12		
13	14	15	16	17	18	19		
20	21	22	23	24	25	26		
27	28	29	30	31				

4 Lara Bowen Contemporary

Unit 9 Lion Mews, Richardson Road, Hove BN3 5RA



Lara Bowen: Studio & Gallery, Image: Jo Thorne Photography

Lara represents established and emerging artists and makers from the South East of England.

Paint, print, jewellery and sculpture, there is no house style, simply beautiful art.

Visit Lara's working studio and attached gallery, in a quiet mews a short walk from Hove beach. She will be showing new work by all the artists and the display will change each weekend.

The collection is available to preview and purchase via the website, as is info on workshops running through the summer.

07909 511159
larabowen@me.com
www.larabowencontemporary.com

STUDIO-OR-WORKSHOP



							11.00-17.00	
M	T	W	T	F	S	S		
6	7	8	9	10	11	12	4	5
13	14	15	16	17	18	19		
20	21	22	23	24	25	26		
27	28	29	30	31				

6 Encounters

12 Langdale Road, Hove BN3 4HN



La Reina de Diamantes Amas y una Suspiros: Francisco Prigo

This year Encounters breaks new ground by bringing together poets and visual artists for close artistic interactions. Poets have given voice to the exhibited canvases creating a plastic dialogue that enables visitors to explore synergies in a multi-sensory experience.

Miladys@encountersartspace.com
www.encountersartspace.com
@encountersartspace

HOUSE



							11.00-18.00	
M	T	W	T	F	S	S		
6	7	8	9	10	11	12	4	5
13	14	15	16	17	18	19		
20	21	22	23	24	25	26		
27	28	29	30	31				

5 Village BN3

4 Richardson Road, Hove BN3 5RB



We are a new community concept store taking part in the Open Houses for the first time. We have a collection of fine jewellery, designed by Orelia founder **Louisa Hirst**, affordable and colourful art prints and a beautiful selection of lifestyle gifts sourced from UK

independent brands. Choose a card from an amazing selection of illustrators and pop it in the post-box right outside! Look out for creative workshops and meet the maker/artist events bringing the local community together.

hello@villagebn3.com
www.villagebn3.com

COMMERCIAL-PREMISES



Sa 09.30-15.00, Su 11.00-15.00,
Tu-Fr 10.00-17.00

M	T	W	T	F	S	S		
	1	2	3	4	5			
6	7	8	9	10	11	12		
13	14	15	16	17	18	19		
20	21	22	23	24	25	26		
27	28	29	30	31				

7 Sam Bailey and Friends

14 Princes Crescent, Hove BN3 4GS



Outside The Yellow Box: Sam Bailey

Sam Bailey will be opening her door with friends, for **one weekend only**, showcasing a vibrant selection of arty goods. Relax in the open garden, fill up with a cup of tea and try our delicious homemade cakes.

Sam Bailey
Illustration
Anna Tinner
Mixed media
Cherry Parsons
Painting
Franks Goods
Dog accessories
Martha Mitchell
Home accessories
Katherine Snow
Organic skincare
Dorothy Koomson
Textiles and books

07973 121241
hello@sambaileydesigns.co.uk
www.sambaileydesigns.co.uk

HOUSE



							11.00-17.00	
M	T	W	T	F	S	S		
	1	2	3	4	5			
6	7	8	9	10	11	12		
13	14	15	16	17	18	19		
20	21	22	23	24	25	26		
27	28	29	30	31				

8 Studio 28

28a Westbourne Place, Hove BN3 4GN



Sez Carlisle

Welcome to our small backstreet art studio. We've been here for nine years and have established a warm and comfortable old style environment of creativity.

- Sez Carlisle** *Painter*
- David Barker** *Painter*
- Tamara Wildash** *Mixed media*
- Suzi Lowe** *Painter*
- Damian Toal** *Painter*
- Grace Fung** *Painter*
- Xen Gregoriadis** *Painter*

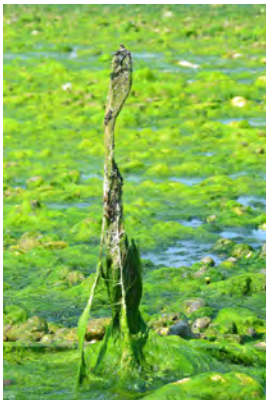
07943 891752
davej_barker@hotmail.co.uk
@artstudio28a

STUDIO-OR-WORKSHOP

							10.00-1600	
M	T	W	T	F	S	S		
6	7	8	9	10	4	5		
13	14	15	16	17	11	12		
20	21	22	23	24	18	19		
27	28	29	30	31	25	26		

9 Bluebell Would

45 Westbourne Gardens, Hove BN3 5PN



Touch the Spindle: Bluebell Roebuck

- Sarah Jones** *Prints*
- Polly Marix Evans** *Linoprints*
- Beachside Kiln** *Glasswork*
- Megality Design** *Linoprints*
- Lulu McQueen** *Jewellery*
- Papier Maverick**
Papier mâché sculptures
- Maria Buttuller** *Print making*
- Heather Parr** *Print making*
- Woofing Fabulous** *Ceramics*
- Kore Sage** *Mixed media*
- Beaubottletops** *Mixed media*
- SweetiePips** *Jewellery*
- Isolation Monster** *Illustration*
- KaiJedCreative** *Digital media*
- Sarah's Doll Parts**
Faux flowers porcelain dolls heads
- Hey Sassy** *Jewellery*
- iHeart Pop Art** *Digital media*
- Claire Barrett** *Painting*
- Jay's Preserves** *Preserves*
- Vicky Gomez** *Print making*
- Abeille Botanicals**
Bath treats and candles
- Fanny Fielding** *Painting*
- Jo-Anna Rawlings** *Textiles*
- Mariana K** *Mixed media*
- Wild Jar Terrariums**
Terrariums
- Wild Flora** *Jewellery*



Chasing Pink Skies - Ferry Crossing: Tiffany Lynch

Find a warm welcome at our friendly, inclusive house. Meet the artists, view some gorgeous art and crafts, and be inspired!

Bluebell Roebuck
Photography and painting

Tiffany Lynch *Painting*

Sarah Duffield *Painting*

Mark Munroe-Preston *Treescapescapes*

07739477611
Bluebellwouldopenhouse@gmail.com
www.instagram.com/bluebellroebuck

HOUSE



							11.00-17.00	
M	T	W	T	F	S	S		
6	7	8	9	10	4	5		
13	14	15	16	17	11	12		
20	21	22	23	24	18	19		
27	28	29	30	31	25	26		

10 The Studio Gallery

4 Westbourne Grove, Hove BN3 5PJ



Guitar Pedals (detail): Hannah Forward

Previously at 12 Scott Road, this is our second year in our new venue, just five minutes walk away.

An array of contemporary work by local artists in a modern glass-fronted split-level studio, including prints, paintings, ceramics, jewellery and more.

hello@georgiflowers.co.uk

www.instagram.com/fox_forward_flowers_friends

STUDIO-OR-WORKSHOP



Hannah Forward
Georgia Flowers
Joy Fox
Sarah Bidwell
Ken Eardley
Stuart Smith
Jim MacAirt
Anna Pugh
Rarebit Design
Pete Shuttleworth
Julian Warrender
Catriona Muir
William Papworth
Alexis Rayner

11.00-17.00

M	T	W	T	F	S	S
		1	2	3	4	5
6	7	8	9	10	11	12
13	14	15	16	17	18	19
20	21	22	23	24	25	26
27	28	29	30	31		

12 Jomo Hove

31 Wordsworth Street, Hove BN3 5BG



Dolly Girl Brenda: Jo Moore

We look forward to welcoming you for the third year. A freshly curated show of returning and new artists and makers in our popular Poets' Corner Open House.

Jo Moore

Cardboard creations

Laurence Wallace

Watercolour paintings

Lesley Bissexer

Hand stitched cushions

Sally Smith

Still life paintings

Peter Slight

Ceramics

Mimi Butler

Lino prints

Annabet Wyndham

Enamel jewellery

Peter Radcliffe

Landscape paintings

Romud

Thrown ceramics

11.00-17.00

M	T	W	T	F	S	S
		1	2	3	4	5
6	7	8	9	10	11	12
13	14	15	16	17	18	19
20	21	22	23	24	25	26
27	28	29	30	31		

07794 960119
jo@jomo.co.uk
www.jomo.co.uk/

HOUSE



11 StephanieAnn

87 Portland Road, Hove BN3 5DP



Hand Embroidered Hove Actually Socks
with Silk Scarf, StephanieAnn

The StephanieAnn studio and shop is a creative space where textile designer Stephanie works, creating print designs and personalised embroidery for bags, scarves, clothing, pyjamas as well as teaching hand embroidery workshops. StephanieAnn is joined by makers for the month, specialising in handcrafted

07760 324452

info@stephieanddesign.co.uk

www.stephieann.co.uk

STUDIO-OR-WORKSHOP



jewellery, ceramics, illustration and clothing.

StephieAnn Gifts

Kate Wainwright *Jewellery*

Sage Ceramics *Ceramics*

Sophie Rankin *Illustration*

Sourced by Shelley

Vintage upcycled clothing

11.00-17.00

M	T	W	T	F	S	S
		1	2	3	4	5
6	7	8	9	10	11	12
13	14	15	16	17	18	19
20	21	22	23	24	25	26
27	28	29	30	31		

13 Villa LVI (56)

56 Payne Avenue, Hove BN3 5HD



Enamelled lava stone: Filhouette

In the heart of Poet's corner, we are a long established open house with an international team of artists showcasing a wide variety of work reflecting the group's diversity in origin, inspiration, style and media. Not to be missed!

Jessica Llinares

Marcia

Mixed media

Emma Gonzales

Painting

Paul Munson

Photography

Jenny Turtilil

Jewellery

Ksenia Semirova

Textiles

Kai Nemra

Painting

Serena Sussex

Painting

Filhouette

Enamelled volvic

lava stone

Virginie Vincent

Mixed media

07818 217142

virginie23@gmail.com

www.instagram.com/VillaLvi

HOUSE



11.00-17.00

M	T	W	T	F	S	S
		1	2	3	4	5
6	7	8	9	10	11	12
13	14	15	16	17	18	19
20	21	22	23	24	25	26
27	28	29	30	31		

14 Studio 106

106 Coleridge Street, Hove BN3 5AA



Winter Schedule Soisrice: Irene Marot



Cape Noctem in 3 parts: Carrie Stanley

Studio 106 is an interesting mix of 17 artists, who will be opening up their workspaces and exhibiting their work.

It's a fantastic light and airy open warehouse space with a communal gallery.

The Irene Mensah Gallery is named in memory of our friend, artist and founder member, who sadly left us ten years ago.

There will be a mixed exhibition in the gallery. We have excellent painters, photography, graphics, mixed media, printmaking, textiles, lighting design and animation.

- Lucianna Whittle** Oil painting
- James Cowland** Oil and watercolour painting
- Jael O'Connor** Painting
- Richard Berner** Mixed media
- Amy Dury** Painting
- Emma Gale** Textiles
- Matt Ward** Illustration and design
- Jon Clark** Lighting design
- Christina Reading** Painting
- Andre Lichtenberg** Photography
- David Storey** Painting
- Irene Marot** Painting
- Tom Diamontopoulos** Painting
- Carrie Stanley** Painting
- Heather Quin** Mixed media
- Sam Flylightly** Painting
- Steve Cavalier** Animation director

07905 537832
 studio106hove@yahoo.com
 studio106hove

STUDIO-OR-WORKSHOP

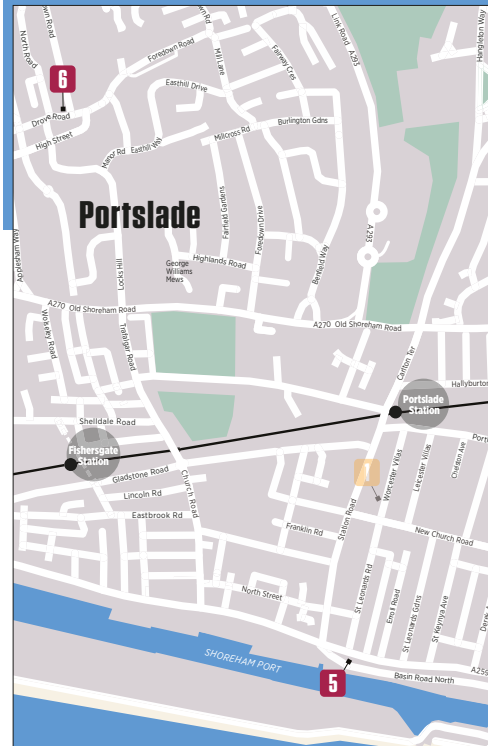
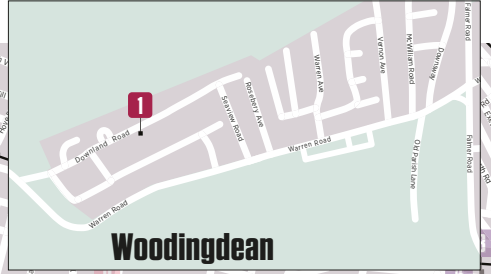
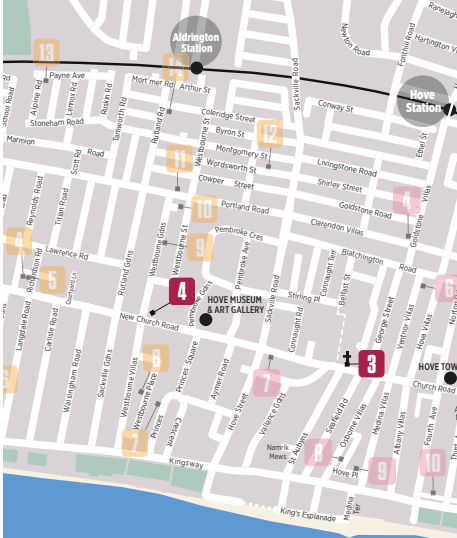
		11.00-17.00									
M	T	W	T	F	S	S					
		1	2	3	4	5					
6	7	8	9	10	11	12					
13	14	15	16	17	18	19					
20	21	22	23	24	25	26					
27	28	29	30	31							

Brought to you by Beach Without Sand

Brighton SPIEGELTENT 2024

DRAG GINGER JOHNSON **CIRCUS CABARET JOE BLACK**
MUSIC UNITED QUEENDOM CLUBNIGHTS
SEAYONCÉ COMEDY DIZNEY IN DRAG
FAMILY SHOWS DAVID HOYLE LIFE DRAWING
BOOGALOO STU FOOD ALFIE ORDINARY
TALKS SASSY! DRINK CINEBRA DANCE
PLUS LOOOOOOOOOOOOOOOOOOOOADS MORE!!!

3 MAY - 2 JUNE AT THE OLD STEINE
2024 Tickets at **BNT 1EM**
www.brightonspiegeltent.com
 @brightonspiegeltent @bspiegeltent



1 Eve Shepherd Sculptures

46 Downland Road, Woodingdean, Brighton BN2 6DJ



Listen: Eve Shepherd

07904 027113
info@eveshepherd.com
www.eveshepherd.com

HOUSE



After a seven year AOH hiatus! You're warmly invited into the multi award-winning and critically acclaimed artist **Eve Shepherd's** home and 'little' garden studio to see her figurative ceramic and bronze sculptures.

Eve's distinctive work is known for the hybrid figures she creates, often infusing deep emotion and queerness, she merges human, animal, fungi and plants.

Her works are held in public and private collections, from The Betty Campbell Monument in Cardiff to the National Maritime Museum.

						10.00-17.00	
M	T	W	T	F	S	S	
6	7	8	9	10	11	12	
13	14	15	16	17	18	19	
20	21	22	23	24	25	26	
27	28	29	30	31			

2 Temple Art Group

68-69 Montpelier Road, Brighton BN1 3AT



Summer Press: Fall Stitches

Temple Art Group at The Hive, Brighton Girls School, hosts a collection of local artists, with tempting and engaging artwork for you to enjoy. During the last weekend we are also showing our GCSE and A Level students' work.

Tiffany Crisp *Mixed media*

Hey Lyla Crafts *Textiles*

07813 169811

tiffany.crisp@hotmail.com
www.instagram.com/templeartgroup/

EDUCATIONAL-INSTITUTION



Shallow Pottery *Ceramics*

Prescription Resin *Mixed media*

Ruth Wragg-Jones *Print making*

Hannah Issi *Textiles*

Fell Stitches *Textiles*

Of Book and Bees *Print making*

Helen Wright *Jewellery*

Pull and Pin *Textiles*

						11.00-17.00	
M	T	W	T	F	S	S	
6	7	8	9	10	11	12	
13	14	15	16	17	18	19	
20	21	22	23	24	25	26	
27	28	29	30	31			

3 Building Bridges

St Andrew's Old Church, Church Road, Hove BN3 2AD



Coming over the bridge: Annelies Clarke

Annelies Clarke

Storytelling paintings

Featuring The Art of Life in its many aspects, including the Art of Negotiation

Sat 11 May:
a Punch & Judy show
at 3pm and 4.15pm

						11.30-17.00	
M	T	W	T	F	S	S	
6	7	8	9	10	11	12	
13	14	15	16	17	18	19	
20	21	22	23	24	25	26	
27	28	29	30	31			

07808 532451
anneliesclarke@gmail.com
www.anneliesclarke.com

COMMUNITY



4 St Christopher's Prep, Hove

33 New Church Road, Hove BN3 4AD



Annelie, Year 8

We are delighted to be taking part for the third year; it is an event we look forward to in our local community. This outdoor event on our front playground features the work of every child in our school, from Reception

to the portfolios of our Year 8 Art Scholars. There will be craft activities for young visitors and will also be performances from some of our talented musicians. Refreshments will be available.

Saturday 11th May only.

01273 735404

swatson@stchristophershove.org.uk
stchristophershove.org.uk

EDUCATIONAL-INSTITUTION



						12.00-15.00	
M	T	W	T	F	S	S	
6	7	8	9	10	11	12	
13	14	15	16	17	18	19	
20	21	22	23	24	25	26	
27	28	29	30	31			

5 Studio 9 Design & Friends

Studio 9 Design, Unit 3, Ferry Wharf, Basin Road North, Portslade, Brighton BN41 1BD



Studio 9 Living Showroom: Studio 9 Design, Interior & Homeware Designers



Abstracts At The Bargehouse: Susi Petherick, Photographer



Green Leopard Stone, Bobbin Salad Servers: Alessandra Williams, Designer & Artist



Titan 138: Mark Charlton, Mixed Media Artist

Studio 9 Design welcomes you to its first Open House. We are a multi-disciplinary design studio and homeware brand collaborating with nine exceptional local artists for this year's Open House. Our waterfront light-filled studio will be showcasing artwork and products available for purchase throughout this year's event. Come over to ours for a browse!

Alessandra Williams
Designer and artist

Clare Steel
Ceramicist

House Of Quinn
Designer and artist

Jo Evans / 100 Hours
Artist

Jubal Prevatte
Turned wood maker

Louise Ineson
Jeweller

Mark Charlton
Mixed media artist

Sherrie-Leigh Jones
Print maker

01273 526997
info@studio9design.co.uk
studio9living.co.uk

STUDIO-OR-WORKSHOP



Studio 9 Living
Interior and homeware designers

Susi Petherick
Photographer

							10.30-17.00	
M	T	W	T	F	S	S		
		1	2	3	4	5		
6	7	8	9	10	11	12		
13	14	15	16	17	18	19		
20	21	22	23	24	25	26		
27	28	29	30	31				

6 Plunge Creations

Unit 3, Bestwood Works, Drove Road, Portslade BN41 2PA



We want to welcome you to the Plunge Creations workshops for our first-ever Open House!

We create costumes for the stars and make props for some of the world's leading entertainment companies. You may have seen

some of our creations on ITV's *The Masked Singer*. This is a chance to have a nose around the workshops, chat with the team and get a sneaky peek at some of the things we're working on this year.

01273 423014
info@plungecreations.co.uk
www.plungecreations.co.uk

STUDIO-OR-WORKSHOP



10.00-17.00

M	T	W	T	F	S	S
	1	2	3	4	5	
6	7	8	9	10	11	12
13	14	15	16	17	18	19
20	21	22	23	24	25	26
27	28	29	30	31		

7 Ruth Mulvie @Shoreham Airport

Brighton City Airport, Main Terminal Building, Cecil Pashley Way, Shoreham-by-Sea, BN43 5FF

Join me as I showcase a fresh collection of paintings and prints at the Whispering Gallery in Shoreham Airport, a cherished piece of aviation history.

My new artworks pay homage to the airport's legacy, blending aviation and Art Deco themes in my usual colourful and joyful way.

While visiting the airport, why not indulge in some delicious refreshments at the Hummingbird Restaurant (reservations recommended) and enjoy the sight of planes gracefully taking off and landing outside.



Golden Years: Ruth Mulvie

07900 876300
hello@ruthmulvie.com
www.ruthmulvie.com

COMMERCIAL-PREMISES



10.00-17.00

M	T	W	T	F	S	S
	1	2	3	4	5	
6	7	8	9	10	11	12
13	14	15	16	17	18	19
20	21	22	23	24	25	26
27	28	29	30	31		

8 Portable Open House

No Fixed Abode, Brighton and Hove BN1



Portable Open House: Bryony Devitt

Brighton-born artist **Bryony Devitt** can't afford to buy a home. She can barely afford to rent one. But this won't stop her hosting her first Open House!

The POH is a dolls' house on wheels showcasing custom-made miniature artwork by local and international artists.

Roaming the streets of one of Britain's most expensive cities, it provokes reflection on the struggles posed by Brighton's housing crisis.

Follow POH on Instagram for weekly routes and craft workshops raising money for ACORN.

07789 035603
pohbrighton@gmail.com
www.portableopenhouse.com

HOUSE



11.00-16.00

M	T	W	T	F	S	S
		1	2	3	4	5
6	7	8	9	10	11	12
13	14	15	16	17	18	19
20	21	22	23	24	25	26
27	28	29	30	31		

Proud To Support

{ THE ARTIST
 OPEN HOUSE
 FESTIVAL }

Hamptons
 THE HOME EXPERTS

HAMPTONS.CO.UK

Beyond Brighton



There are 24 venues sited outside Brighton and Hove this May.

Starting at Ovingdean and going East to South Heighton, the **Coastal Trail** has seven venues.

Ditchling has thirteen venues sited in the centre of the village, with another at nearby Streat.

There is also a single **Independent** venue in central Ditchling

There are three houses in the new trail at **Hurstpierpoint**

Brought to you by Beach Without Sand

Brighton SPIEGELTENT 2024

CABARET MUSIC GINGER JOHNSON THEATRE CLUBNIGHTS UNITED QUEENDOM FAMILY

FOOD COMEDY JOE BLACK LIFE DRAWING DISNEY IN DRAG TALKS & MORE!!!



3 MAY - 2 JUNE
2024

AT THE OLD STEINE
BN1 1EH

Tickets at
www.brightonspiegelent.com

 @brightonspiegelent   @bspiegelent



As you travel along the Sussex coast from Brighton towards Newhaven you can visit the stunning **Coastal Art Trail** venues. Begin the trail in Ovingdean, turning left at the old St. Dunstan's building on the hill, then on past the windmill to the historic village of Rottingdean. Next stop is Saltdean with its newly refurbished Saltdean Lido. Finally, travel to Newhaven and the lovely village of South Heighton.

With an array of pottery, paintings and artworks to see, enjoy a great day out visiting artists in their homes and studios, in local settings and historic buildings, all nestled in the beautiful Sussex countryside.

Travel Information

Walk: The undercliff walk from Brighton Marina gives access to Ovingdean, Rottingdean and Saltdean.

Bus: Rottingdean 2/2A, 12/12A/12X, 14/14B/14C, 27, 27A, 47, (57 Sun only), Wooddean 2, 22, and 52. For Newhaven, take the 12 Brighton to Eastbourne bus. Ask for Denton Corner for South Heighton. Look on www.buses.co.uk

Rail: Trains from Brighton & Lewes to Newhaven.

Car: From Brighton Marina follow the A259 to Ovingdean, Rottingdean, Saltdean and on to the South Coast Road A259 through Newhaven and then on to South Heighton. From the A23 take the A27 towards Lewes, exit at Sussex University on the B123 to Wooddean, Ovingdean, Rottingdean, Saltdean, South Heighton.

1 Ovingdean Village Hall

Ovingdean Road, Ovingdean, Brighton BN2 7BB

The Backberry: Lorna Davies



Holly Crompton *Illustration*
Sarah Mackenzie *Textiles*
Brian Innes *Print making*
Melissa Graham *Ceramics*
Louise Arnold *Textiles*
Patrick Miller *Mixed media*
Chris Paling *Painting*
Jo Goddard *Sculpture*
Alison Diffley *Jewellery*
Lorna Davies *Jewellery*
Ami Ackroyd *Ceramics*
Shanni Collins *Painting*
SOLD ARTS
Mixed media

A new venue with artists and makers in many disciplines, something for everyone. Meet the artists - several are new to Open Houses.

Cake and free parking in our beautiful village.

07950 778242
 lorna.davies@hotmail.co.uk
 www.ovingdean.co.uk/villagehall

							11.00-17.00	
M	T	W	T	F	S	S		
		1	2	3	4	5		
6	7	8	9	10	11	12		
13	14	15	16	17	18	19		
20	21	22	23	24	25	26		
27	28	29	30	31				

COMMUNITY



3 Cherry Tree Bungalow

65 Wanderdown Road, Ovingdean, Brighton BN2 7BT



Prussia Cove: Sue Haseltine

Sue Haseltine will be exhibiting her beautiful landscape paintings and prints in this new open house. The pretty home and garden are located high up in Ovingdean Village. Joining her will be **Linda Hurley** *Soe ceramics*, **Hummingbird Hawkmoth** *Jewellery* and a selection of

other artists making gorgeous 2D and 3D artwork. Enjoy refreshments during your visit in the beautiful, secluded garden, nestled in downland near the sea - combine with a walk to the beach for a perfect day out.

07795 200580
 www.suehaseltine.com
 www.instagram.com/suehaseltine

							11.00-17.00	
M	T	W	T	F	S	S		
		1	2	3	4	5		
6	7	8	9	10	11	12		
13	14	15	16	17	18	19		
20	21	22	23	24	25	26		
27	28	29	30	31				



2 The Pines

The Pines, Ovingdean Road, Ovingdean, Brighton BN2 7BB



New Horizons: Almond Tree: Acrylic on Canvas, 100cm x 100cm: Tiffany Lynch

For the first time, we are opening The Pines as an artists' open house, featuring wonderful artworks from well-established and emerging local artists. A wide selection of savoury pastries, cakes and refreshments will also be available.

Ingrid Boucher *Ceramics and sculpture*
Tiffany Lynch *Painting*
Laura Darling *Painting*
Judi Burkitt *(guest artist)* *Painting*
Imogen O'Toole *Painting and mixed media*

07824770151
 taylorillar@sky.com
 https://www.facebook.com/profile.php?id=61556890156204

HOUSE



							11.00-17.00	
M	T	W	T	F	S	S		
		1	2	3	4	5		
6	7	8	9	10	11	12		
13	14	15	16	17	18	19		
20	21	22	23	24	25	26		
27	28	29	30	31				

4 Ovoid

5 Ainsworth Avenue, Ovingdean, Brighton BN2 7BG



OVOID studio / project space / gallery

Ovoid studios presents *Hinterland*, a mixed selected show.
 Noun - Hinterland:
 - The land immediately next to, and inland from, a coast.
 - The rural territory surrounding an urban area, especially a port.
 - A remote or undeveloped area, a backwater.

- That which is unknown or unexplored about someone.
 - Anything vague or ill-defined, something that is ill understood.
Simon Fell *Ceramics*
Judith Alder *Sculpture*
Dan Currie *Sculpture*
Carol Smith *Drawing*
 Plus several others

07707 629520
 still@simonfell.co.uk
 simonfell.co.uk/index.php/ovoid-studio-artists-open-house/

STUDIO-OR-WORKSHOP



							11.00-17.00	
M	T	W	T	F	S	S		
		1	2	3	4	5		
6	7	8	9	10	11	12		
13	14	15	16	17	18	19		
20	21	22	23	24	25	26		
27	28	29	30	31				

5 The Grange Gallery

The Green, Rottingdean, Brighton BN2 7HA



The Lure of the Sea: Sara Hill

A solo exhibition from well established artist **Sara Hill**.

A mixture of oil on canvas and detailed pencil drawings, portraying seas, trees and wildlife in which to totally immerse yourself.

01273 301004

sarahill123@icloud.com

www.sarahillartist.com

GALLERY



We-Sa 10.00-16.00, Su 13.00-16.00

M	T	W	T	F	S	S
		1	2	3	4	5
6	7	8	9	10	11	12
13	14	15	16	17	18	19
20	21	22	23	24	25	26
27	28	29	30	31		

6 Woofing Fabulous Pottery

8 Hilgrove Road, Saltdean, Brighton BN2 8QG



Morris: Liza Morton

Come and visit the Woofing Fabulous Pottery in Saltdean on the Coastal Arts Trail. This lovely garden studio is where artist **Liza Morton** creates her sculptures. Throughout her seaside garden you can see Liza's hand-built animal sculptures peeking through her wild flowers and pond area. Celebrating all creates great and small with live clay demonstrations at this hidden gem. She will also be joined by local artist **Bluebell Roebuck**.

Open Friday 10th – Sunday 12th May only.

01273 858584

liza@mta-events.com

lizamorton.com

STUDIO-OR-WORKSHOP



11.00-17.00

M	T	W	T	F	S	S
		1	2	3	4	5
6	7	8	9	10	11	12
13	14	15	16	17	18	19
20	21	22	23	24	25	26
27	28	29	30	31		

7 South Heighton Pottery

Heighton Road, South Heighton, Newhaven BN9 OHL



Pottery Garden: Chris Lewis

New work by **Chris Lewis** recently fired in his 'Anagama' wood fuelled kiln, displayed in the showroom and in the beautiful country garden. There will be an additional exhibition in the gallery space in the house.

Delicious home made lunches and cakes made by Lizzie and Rachael can be enjoyed in this spectacular environment.

This exhibition will continue for a further three weekends in June.

07754 814067

chris@chrislewisceramics.com

www.chrislewisceramics.com

STUDIO-OR-WORKSHOP



11.00-18.00

M	T	W	T	F	S	S
		1	2	3	4	5
6	7	8	9	10	11	12
13	14	15	16	17	18	19
20	21	22	23	24	25	26
27	28	29	30	31		

Supporting Local Artists

LAWRENCE

ART SUPPLIES SINCE 1859

Discover Lawrence Art Shop in Hove...
you'll find top quality artists' materials and equipment from around the world.

The REAL Art Shop

208-212 Portland Road, Hove, BN3 5QT

01273 260280

(Free customer car park at rear of shop)

www.LAWRENCE.co.uk

lee miller Roland Penrose
FARLEYS HOUSE & GALLERY
HOME OF THE SURREALISTS

Muddles Green, Chiddingfold, East Sussex, BN8 6HW

**EXPERIENCE THE EXTRAORDINARY ATMOSPHERE
OF THE SUSSEX HOME OF LEE MILLER & ROLAND PENROSE**



House Tours - Galleries
Sculpture Garden - Workshops - Events
Farleys welcomes visitors on Thursdays, Fridays & Sundays
from 04 April – 31 October 2024. 10am – 4.30pm

JOIN US IN 2024 TO CELEBRATE FARLEYS 75TH ANNIVERSARY

Please book online

www.farleyshouseandgallery.co.uk

@FarleysHG

The Shape of Things: Still Life in Britain

11 May – 20 Oct 2024



P

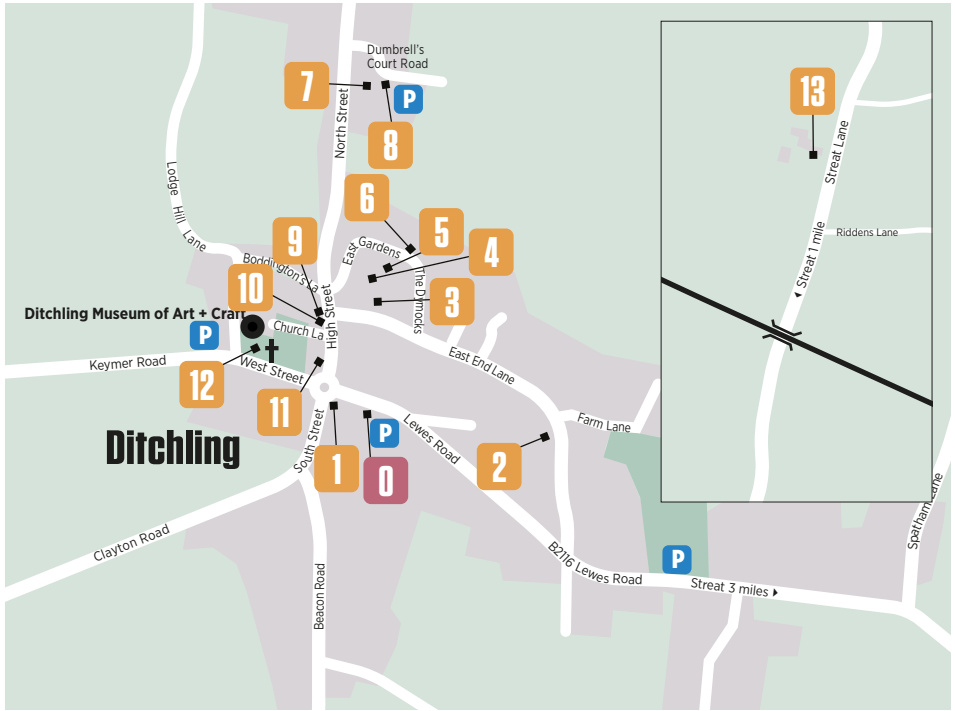
**Pallant
House
Gallery**

**pallant.
org.uk**

Headline Sponsor

SOFAS & STUFF

Edward Wadsworth, *Bright Intervals*, 1928, Tempera on canvas laid on panel, Museum & Art Swindon
Registered Charity No: 1102435



Art in Ditchling (AiD) offers you a warm welcome to the AOH Ditchling Trail 2024. Ditchling, at the foot of Ditchling Beacon and nestled within the South Downs National Park, is an historic village playing host to a selection of contemporary artists, craftspeople, designers and makers, showcasing a range of high-quality work. Visit their home galleries and gardens, studios and workshop venues for Artists Open Houses. Choose to spend a beautiful day, or longer, meeting the artists and makers, visiting Ditchling Museum of Art+Craft, and enjoying the cafes and pubs which offer delicious meals, refreshments and local wines.

Venues will be open weekends in May and Bank Holidays 6th and 27th May.

www.artinditchling.co.uk

@art_in_ditchling

Travel Information

Walk: Accessible footpaths connect venues in and around the village.

Rail: Hassocks station, 30 minutes walk in an easterly direction to Ditchling. Taxis located on the west side of the station.

Car: 3 miles from A23 via the B2112 or B2116 from Hassocks.

Free parking (see map for locations)

For accommodation and further information see www.visitditchling.co.uk

Sponsors

Art in Ditchling would like to thank their sponsors:

Artelium Wine Estate
www.artelium.com

Blackberry Wood
www.blackberrywood.com

The Bull
www.thebullditchling.com

Chatt Estates
www.chattestates.co.uk

Ditchling Spirits
www.ditchlingspirits.com

The Green Welly
www.thegreenwellycafe.co.uk

Macs Farm
www.themacsfarm.co.uk

The Nutmeg Tree
www.thenutmegtree.co.uk

Poison Ivy
www.poisonivyditchling.com

Pruden and Smith
www.prudenandsmith.com

Sussex Sign Centre
www.sussexsigncentre.co.uk

The White Horse
www.whitehorseditchling.com

Window Gallery
www.windowgallery.co.uk

1 Pruden and Smith

Pruden and Smith, 2 South Street, Ditchling BN6 8UQ

Designing luxury and bespoke jewellery since 1988, Pruden and Smith blend a history of goldsmithing with nature-inspired designs. Their gallery is located at the crossroads of the Arts and Crafts village of Ditchling. Expect rugged textures, unique patterns, and graceful curves – all handmade in their onsite workshop.

Creative Director Rebecca Smith draws much of her inspiration from the natural world, be it the raw beauty of gemstones, the organic contours of the Sussex landscape, or the gradual, natural erosion of the chalky cliffs of the Seven Sisters. Her Trap (Sussex Shore) Collection uses hammering techniques for a unique finish on each piece of jewellery, designed to embrace the irregularities of nature.

For this year's May festival, Pruden and Smith are holding a special exhibition and workshop tour exploring their



Trap Three Band Diamond Ring: Pruden and Smith



Water Bubbles Random Diamond Half Eternity Ring: Pruden and Smith

redesign process, featuring tools and samples that take you on a journey from design and make right through to the final finishing touches. Book via their website.

Open 1-31 May.

01273 846398
hello@prudenandsmith.com
www.prudenandsmith.com

STUDIO-OR-WORKSHOP



Mo-Sa 10.00-17.00, Su 11.00-16.00						
M	T	W	T	F	S	S
		1	2	3	4	5
6	7	8	9	10	11	12
13	14	15	16	17	18	19
20	21	22	23	24	25	26
27	28	29	30	31		

2 The Annexe

82 East End Lane, Ditchling BN6 8UR



Ceramics: Penny Sanderson

The Annexe, towards the end of East End Lane, is back again this year with a fabulous group of experienced and talented artists.

We'll be exhibiting original artwork, prints, homeware, ceramics and jewellery – something for everyone and a venue not to be missed.

+447985 125299
pennysanderson03@gmail.com
www.pennysanderson.com

STUDIO-OR-WORKSHOP



Nearby parking is at the Recreation Ground – the perfect place to start your art trail in our beautiful village.

Penny Sanderson *Painting*
Claire Scott *Ceramics*
Vee Pease *Jewellery*
Ruth Waters *Mixed media*

11.00-17.00						
M	T	W	T	F	S	S
		1	2	3	4	5
6	7	8	9	10	11	12
13	14	15	16	17	18	19
20	21	22	23	24	25	26
27	28	29	30	31		

3 ThreeFree

Chy Morvah, 25 East End Lane, Ditchling BN6 8SX



Beacon with Downward Bus: Miranda Ellis

Celebrating 14 years, three artists exhibit in a quirky cottage and wild garden which leads the visitor through to further interlocking gardens with studios. This space showcases host, **Miranda Ellis's** contrasting Downs and Italian panoramic paintings, **Miranda Ellis's**

07756 883240
me@mirandaellis.com
www.mirandaellis.com

STUDIO-OR-WORKSHOP



abstract cast glass and **Richard Heanley's** iron animal sculptures and furniture.

There is a Special Tribute to the Ditchling artist and a founder member of the Ditchling Trail, **Jennifer Milnes Mathur**, who died in December 2023.

11.00-17.00						
M	T	W	T	F	S	S
		1	2	3	4	5
6	7	8	9	10	11	12
13	14	15	16	17	18	19
20	21	22	23	24	25	26
27	28	29	30	31		

4 Blue Shed Studio

6 East Gardens, Ditchling BN6 8ST



Cosmati Series - olive leaf paper with mixed media: David Browne

David Browne is pleased to be exhibiting a series of Italian inspired drawings, olive leaf prints, paintings, photographs and sculptures.

The Blue Shed Studio is a converted builder's workshop

07872 563943

dmbartist@icloud.com
www.davidbrowneartist.com

STUDIO-OR-WORKSHOP



located off the High Street in the north eastern quarter of Ditchling village.

He very much looks forward to welcoming you to his venue.

Sponsored by sallywilliamsarchitects

11.00-17.00

M	T	W	T	F	S	S
6	7	8	9	10	4	5
13	14	15	16	17	18	19
20	21	22	23	24	25	26
27	28	29	30	31		

6 Studio21

21 East Gardens, Ditchling BN6 8ST



Thermopolium: Bernadina Lloyd

Don't miss this hidden gem of a garden studio in the heart of Ditchling, showing work by Bernadina Lloyd plus four guest artists working in Sussex.

Bernadina Lloyd

Evocative paintings, drawings, collages, assemblages, giclée prints and individual handmade cards

07740 201892

aah@bernadinalloyd.co.uk
www.instagram.com/bernadinalloydartist/

STUDIO-OR-WORKSHOP



Elaine Sheppard Bolt
Ceramics

Judy Dwyer
Mixed media and textile creatures

Jenny Turtill
Jewellery and garden sculpture

Will Spankie
Sculpture

11.00-17.00

M	T	W	T	F	S	S
6	7	8	9	10	4	5
13	14	15	16	17	18	19
20	21	22	23	24	25	26
27	28	29	30	31		

5 Dymocks End Studio

30 East Gardens, Ditchling BN6 8ST



Ditchling Beacon: Louise Dale Chalmers

In an artistic hub of beautiful Ditchling village, Dymocks End is at the heart of a connected web of dynamic Open Houses.

This year's show *Flowers and The Downs: representation to abstraction* showcases LDC's newest, most vibrant of works,

inspired by her beautiful Downs garden.

Enter via East Gardens Lane, or through secret gateways from neighbouring venues. Watch Louise at work, welcoming you to her idyllic South Downs studio. Tea and cake on some days.

07583 341577

chalmers.lnr@gmail.com
@louisedalechalmers

STUDIO-OR-WORKSHOP



11.00-17.00

M	T	W	T	F	S	S
6	7	8	9	10	4	5
13	14	15	16	17	18	19
20	21	22	23	24	25	26
27	28	29	30	31		

7 Myles Dacre studio and gallery

Studio 10 Turner Dumbrell Workshops,
Dumbrells Court Road, Ditchling BN6 8ST



Portrait of Bobby: Myles Dacre

New Ditchling artist!

Welcome to my studio and gallery in the lovely setting of the Dumbrell Workshops housed in converted farm buildings, where I create and display my paintings, drawings and prints. I also show an eclectic mix of paintings and prints by artist friends. A wide range of subjects in different

mediums are on display - hope you enjoy!

Myles Dacre
Paintings and prints (studio and host)

James Kingston Stewart
Paintings and prints

Katrin Williams Prints
Richard Levine Prints

07984 952608

myles@mylesdacre.com
mylesdacreart.com

HOUSE



11.00-17.00

M	T	W	T	F	S	S
6	7	8	9	10	4	5
13	14	15	16	17	18	19
20	21	22	23	24	25	26
27	28	29	30	31		

8 Lisa Scholz Studio 17

Turner Dumbrell Workshops, Dumbrells Court Road, Ditchling BN6 8GT



Dissiance (series): Lisa Scholz

Welcome to my attic studio in Ditchling. I am an abstract artist and Reiki practitioner, both fundamental to the way I work and live. Painting is a form of meditation and deep listening, part of the sacred journey. This new collection dissonance is an action call to a more equitable world. The work itself is how I process and am led forward. Disrupt, boycott, make noise. These are all themes that are part of the story.

07936 600977
lisascholz@btinternet.com
www.lisascholz.co.uk

STUDIO-OR-WORKSHOP



		11.00-17.00					
M	T	W	T	F	S	S	
		1	2	3	4	5	
6	7	8	9	10	11	12	
13	14	15	16	17	18	19	
20	21	22	23	24	25	26	
27	28	29	30	31			

10 No.35

35 High Street, Ditchling BN6 8SY



'Ere's Lookin' at You!': ali Stringell

Ali Stringell

Meryl Stringell

Ali opens her studio, No.35, to showcase new drawings in charcoal, alongside jewellery, silverware and works in paper. She is joined by her mother, Meryl, who exhibits still-life and landscape paintings in oil.

Open each weekend in May and additionally: Bank Holiday Mondays 6th & 27th May

We look forward to seeing you.

ali@st-ringell.com
@alstringell
@stringellmeryl

HOUSE



		11.00-17.00					
M	T	W	T	F	S	S	
		1	2	3	4	5	
6	7	8	9	10	11	12	
13	14	15	16	17	18	19	
20	21	22	23	24	25	26	
27	28	29	30	31			

9 No.37

37 High Street, Ditchling BN6 8SY



Artist: Jo Watters-Pawlowski
Image by: Kris Pawlowski (@krispm56)

Jo Watters-Pawlowski

Abstract painter

Marija Bichan

Ceramicist

Jo's new landscape paintings evoke a feeling of being somewhere and nowhere. Gestures of bold shape, colour

and form lend abstraction to the image. These paintings have no noticeable skyline to challenge perception, blurring the line between reality and imagination.

As part of a collaborative project with ceramicist Marija Bichan, we are showcasing our porcelain platter collection.

07926 082354
jowp.art@gmail.com
www.jowatterspawlowski.com

HOUSE



		11.00-17.00					
M	T	W	T	F	S	S	
		1	2	3	4	5	
6	7	8	9	10	11	12	
13	14	15	16	17	18	19	
20	21	22	23	24	25	26	
27	28	29	30	31			

11 15 High Street, Ditchling

15 High Street, Ditchling BN6 8SY



Tengeman's Owl: Rosemary Pavey

Welcome to a delightful little house in the centre of the village with a secret garden and a 'bothy' where this year's show will be held. Meet **Rosemary Pavey** - local artist and author,

showing original paintings and drawings plus cards, prints and books and guest exhibitor

Kate Baker-Brown - printmaker and bookbinder.

01273 842795
rosemary.pavey@googlemail.com
sparrowworks.co.uk

HOUSE



		12.00-17.00					
M	T	W	T	F	S	S	
		1	2	3	4	5	
6	7	8	9	10	11	12	
13	14	15	16	17	18	19	
20	21	22	23	24	25	26	
27	28	29	30	31			

12 The Barn on the Green

Ditchling Village Barn, Ditchling BN6 8SP



Visit this beautiful new venue as part of the Art in Ditchling Trail. Centrally placed in the heart of Ditchling on the village green. A carefully curated mix of established and emerging contemporary creatives from across Sussex.

Printmaking, painting, jewellery, furniture, ceramics, textiles, wallpaper, botanical portraiture.

Two weekends, each filled with a changing mix of the most vibrant and contemporary makers, artists, and artisans.

0775 180533

jo@thesussex.co.uk

www.thesussexcontemporary.co.uk/aohditchling

COMMUNITY



11.00-17.00

M	T	W	T	F	S	S
6	7	8	9	10	11	12
13	14	15	16	17	18	19
20	21	22	23	24	25	26
27	28	29	30	31		

10 Attic

Ditchling Village Hall, 18 Lewes Road, Ditchling BN6 8TT

The prestigious Attic Art Club welcome you once more to view and purchase high quality original work directly from the artists. The group, formed in Ditchling in 1939, is selective, with many well established, talented local artists and also some up and coming new young talent.

Friday 3rd May, noon-8pm
Saturday 4th, Sunday 5th
and Monday 6th, 10am-5pm

Everyone is welcome to join the artists for wine and canapes on the Friday from 6pm-8pm.



Hap-pier: Chris Dawson

01273 504588

atticartclub1@gmail.com

https://atticartclub.co.uk

COMMUNITY



10.00-17.00

M	T	W	T	F	S	S
6	7	8	9	10	11	12
13	14	15	16	17	18	19
20	21	22	23	24	25	26
27	28	29	30	31		

13 Art At Artelium: Wood, Earth

Artelium Wine Estate, Streat Lane, Streat, Sussex BN6 8SA



Tenderness is Complicated: Walter Bailey

Artelium collaborates with local and national artists, showcasing contemporary art and craft amidst the landscape of the South Downs.

Artelium presents: *Wood, Earth*, a solo exhibition from artist **Walter Bailey**. Working with wood, Walter creates intricate

patterns and bold structures using hand tools, chainsaws and fire. Taking place in the tasting room and vineyard, this exhibition includes: large and small sculptures, woodblock prints and a permanent sculpture created especially for Artelium. Late Open: Saturday 18th May, 11.00 - 20.00

01273 569155

kate.reeveedwards@artelium.com

www.artelium.com

COMMERCIAL-PREMISES



11.00-16.00

M	T	W	T	F	S	S
6	7	8	9	10	11	12
13	14	15	16	17	18	19
20	21	22	23	24	25	26
27	28	29	30	31		



www.artelium.com @arteliumwine
Artelium Wine Estate • Streat Lane • Streat • Sussex • BN6 8SA

27 March–8 September
→ Lewes, BN7 1AB

charleston.org.uk

CHA
RLES
TON



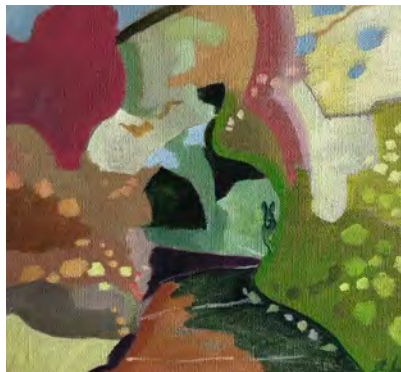
Dorothy Hepworth
and Patricia Preece
An Untold Story



There are three venues this year in the new **Hurstpierpoint** Open House Trail. Just three miles west of nearby Ditchling Open House Trail, the village is only a gentle half hour walk from Hassocks railway station and can be easily reached by car from the A23 and A273. Buses run from Brighton and Crawley, Number 273, and from Burgess Hill and Haywards Heath, Number 33.

1 Ella Berthoud East House

East House, 110 Cuckfield Road, Hurstpierpoint BN6 9RZ



In the Woody Woody Woods V: Ella Berthoud

Ella Berthoud is an artist working in oil and acrylic. Ella paints portraits, abstract

landscapes and paintings of people metamorphosing into other things.

07801 160820
ellabertoud@gmail.com
www.ellabertoud.com

HOUSE



							11.00-17.00	
M	T	W	T	F	S	S		
		1	2	3	4	5		
6	7	8	9	10	11	12		
13	14	15	16	17	18	19		
20	21	22	23	24	25	26		
27	28	29	30	31				

2 Helen Twigge-Molecey

Abberton House, 6 Hassocks Road, Hurstpierpoint BN6 9QN



Zoom Vases: Helen Twigge-Molecey (Photo: Sylvain Deleu)

Welcome to my glassblowing studio, where you'll find unique pieces from colourful glasses and vases to fungi-inspired sculptures.

I'm an award-winning artist and designer and will be taking part in the May Artists Open Houses for the first time.

07976 366880
helen@twiggemolecey.com
www.helentwiggemolecey.com

STUDIO-OR-WORKSHOP



							11.00-17.00	
M	T	W	T	F	S	S		
		1	2	3	4	5		
6	7	8	9	10	11	12		
13	14	15	16	17	18	19		
20	21	22	23	24	25	26		
27	28	29	30	31				

3 Pig Snout Orchard

15 Randiddles Close, Hurstpierpoint BN6 9BG



Light in the Bay: Claire Grose

Nestled at the foot of the Downs with unique views over Wolstonbury Hill, Pig Snout Orchard offers a chance to explore the work of two experienced contemporary semi abstract landscape artists. Both

painting in oil they offer visitors a chance to view an emotional and intuitive response to the landscape they are inspired by.

Claire Grose *Painting*
Kate Harries *Painting*

07793 488555
clairegrose1@yahoo.com
www.clairegrose.co.uk

HOUSE



							11.00-17.00	
M	T	W	T	F	S	S		
		1	2	3	4	5		
6	7	8	9	10	11	12		
13	14	15	16	17	18	19		
20	21	22	23	24	25	26		
27	28	29	30	31				

Why Not Take Part?

If you live in the Brighton and Hove area, you can open your house to take part in the Artists Open Houses festival.

To find out how to get involved, including how to join a local trail, have a look at the 'Artists info' section of our website:

www.aoh.org.uk/artists-info/

You can also take part if you live outside the area, by becoming a guest artist exhibiting in someone else's Open House.

For more information visit:

www.artists-seeking-houses.aoh.org.uk

Events in Open Houses

Many Open Houses offer you the chance to explore your creative side through hands on workshops and other events.

For all event information see the Events page of the AOH website:

www.aoh.org.uk/events

WORTHING Festival

8 - 23 JUNE 2024

music
theatre
dance
heritage

art
comedy
film
and more...

A celebration of ARTS & CULTURE in Worthing



Artwork created by Jo Taswell
BA Fine Art Degree



INSIDE ●●●●

Explore further:

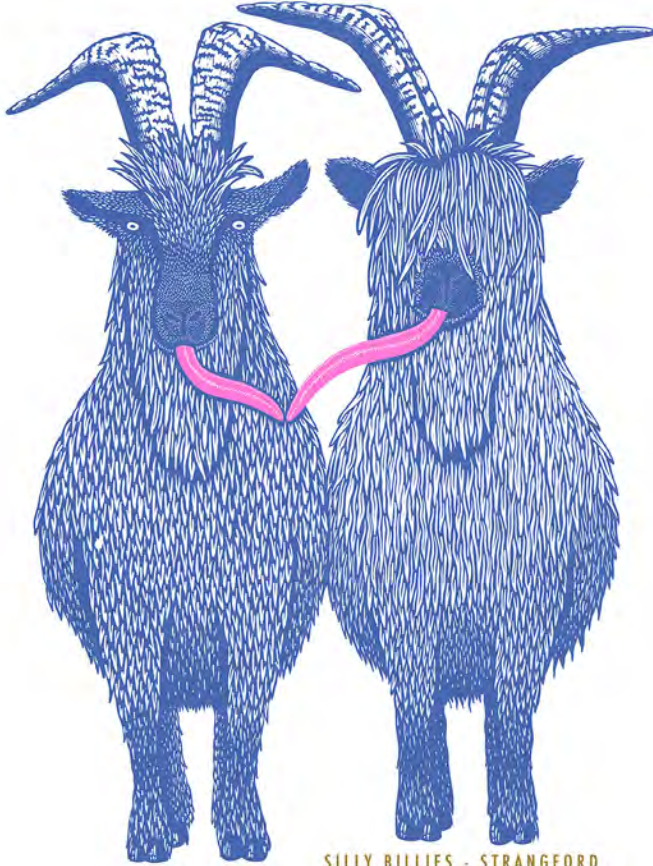


For Worthing Festival listings visit
timeforworthing.uk



THE RISO SHOW

ENVIRONMENTALLY FRIENDLY STENCIL DUPLICATOR PRINTING
LOVED SINCE THE 1970'S



SILLY BILLIES - STRANGFORD

23 MARCH - 19 MAY 2024
11-5PM EVERY DAY

IF YOU CAN'T VISIT SEE THE SHOW ONLINE AT
WWW.ATELIERBRIGHTON.CO.UK

165 KINGS ROAD ARCHES, BRIGHTON BEACH, BN1 1NB
JUST TO THE EAST OF SHELTER HALL AT THE BOTTOM OF WEST STREET

Visit our shop in the Heart of Brighton's North Laine

Contemporary Handmade Jewellery



- Heirloom quality jewellery
- Bespoke design service
- Remodelling, repairs & alterations

www.julianstephens.com

NORTH LAINE JEWELLERY SCHOOL

Learn To Make Jewellery Here

www.northlainejewelleryschool.com

Evening classes and short courses



Visit us at:

37 GLOUCESTER ROAD

BRIGHTON BN1 4AQ

TEL: 01273 692110



**HELP
MARTLETS
GROW**

SAVE the DATE

**Martlets' Open Day
Saturday 29 June 2024**



Martlets 
life-changing hospice care

MN0095



Find out more and
register to
attend here